

<b>16</b>	<b>DISPLAY CABINET HARDWARE</b>	<b>Pages</b>
	Cam Locks	2 - 3
	High Security Locks For Hinged Doors	4
	Locks For Hinged Doors	5 - 9
	Locks For Drawers	9 - 10
	Locks For Filing Cabinets	11 - 12
	High Security Locks For Sliding Doors	13
	Locks For Sliding Doors	13 - 18
	Track / Rail Components For Sliding Doors	19 - 20
	Flush Locks For Lockers	21 - 22
	Glass Door Knob Locks	23 - 29
	Hinges For Cabinets	30 - 31
	Shelf Supports & Standoffs	32 - 34

# 16 DISPLAY CABINET HARDWARE



# DISPLAY CABINET HARDWARE

## CAM LOCKS

We have many different cam lock options available - see Section 9 **Cam Locks**.



Camlock  
Non-locking  
Wing knob



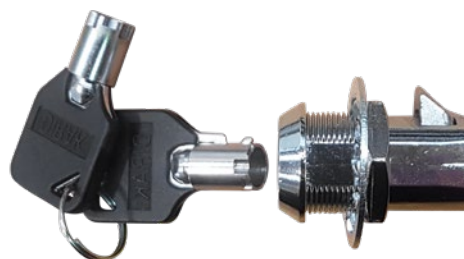
Camlock  
Combination / High security tubular key



Camlock  
Cylinder lock  
(blade type key)



Camlock  
High security Finland key

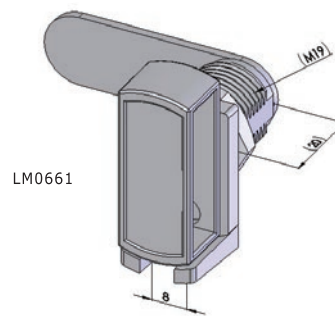
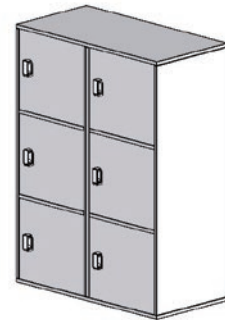
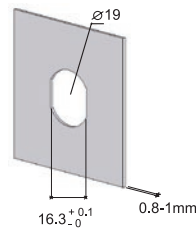
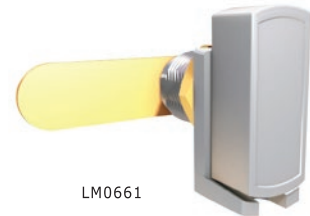
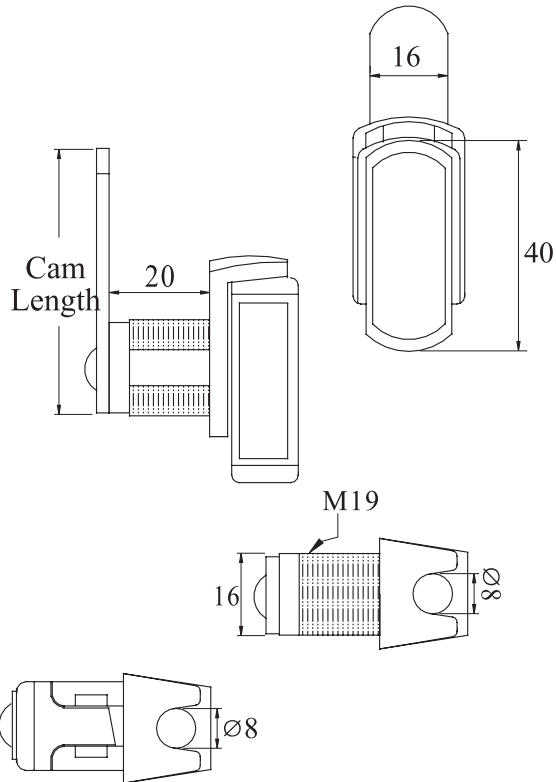


Camlock  
Slam lock  
High security tubular key

# DISPLAY CABINET HARDWARE

## PADLOCKABLE CAM LOCK FOR LOCKER DOORS

### STEEL ZINC



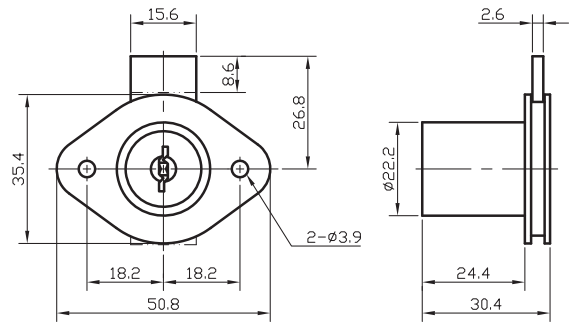
Code	Description
LM0661.20.F.06.FL	Complete lock

# DISPLAY CABINET HARDWARE

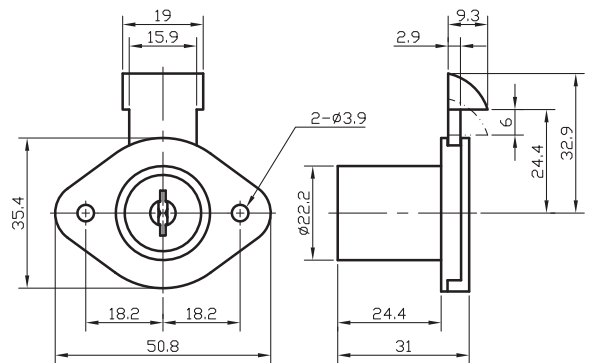
## PAGODA KEY HIGH SECURITY LOCKS FOR HINGED DOORS



**1772-KA**  
Fixed cam



**1773-KA**  
Spring loaded slam snib

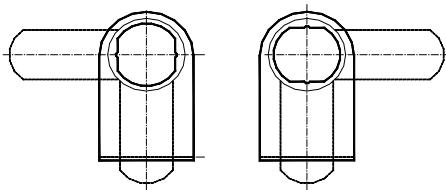
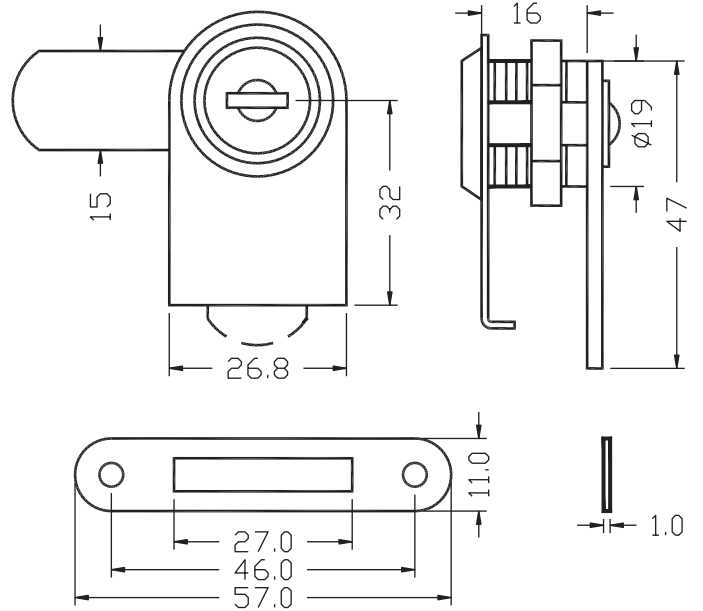
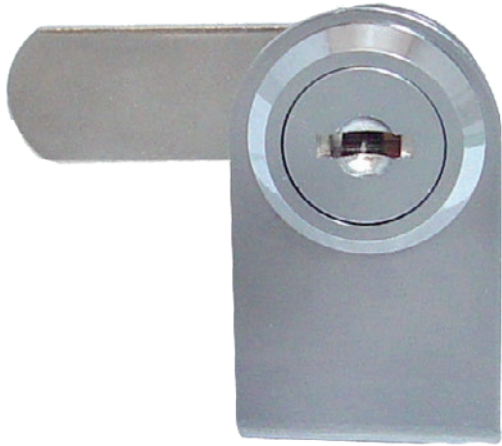


Code	Description	Hole Dia (mm)	Key Type
1772-KA	Sliding cam	23	Keyed Alike
1773-KA	Spring loaded slam snib	23	Keyed Alike

DISPLAY CABINET HARDWARE

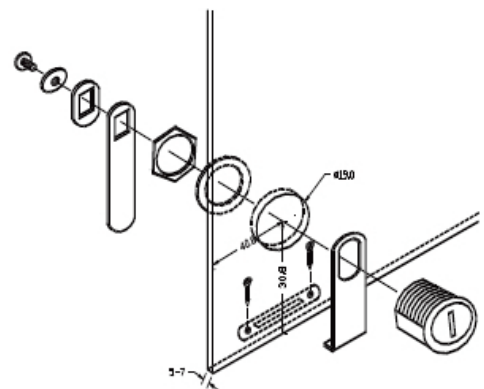
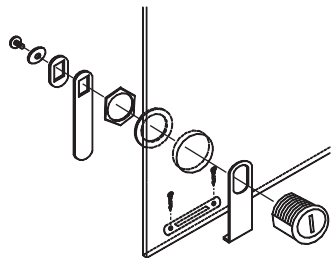
# DISPLAY CABINET HARDWARE

## HINGED GLASS DOOR LOCK



410-1

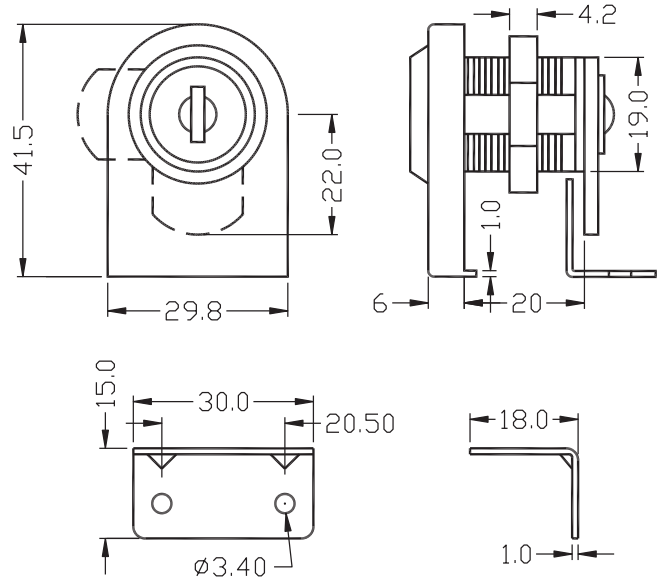
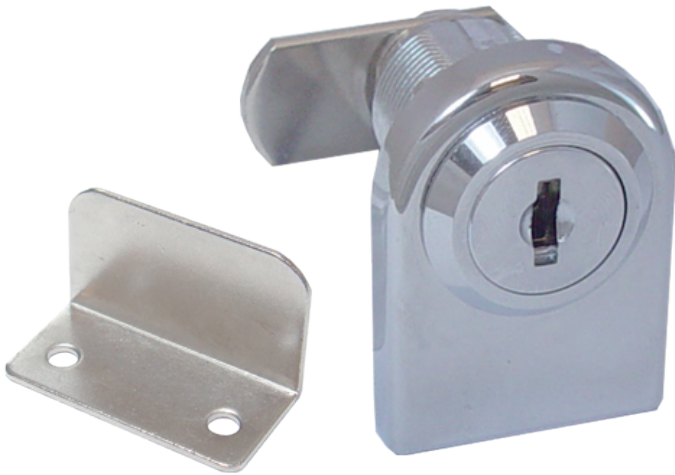
410-1R



Code	Description	Glass Thickness (mm)	Handedness	Key Number
C410-1L	Glass door lock	5-7	Left	KA120
C410-1R	Glass door lock	5-7	Right	KA120

# DISPLAY CABINET HARDWARE

## HINGED GLASS DOOR LOCK



Code	Description	Key Number
C410-4-KA120	Glass door lock	KA120

## DOOR / DRAWER LOCK ACCESSORY STRIKE PLATE

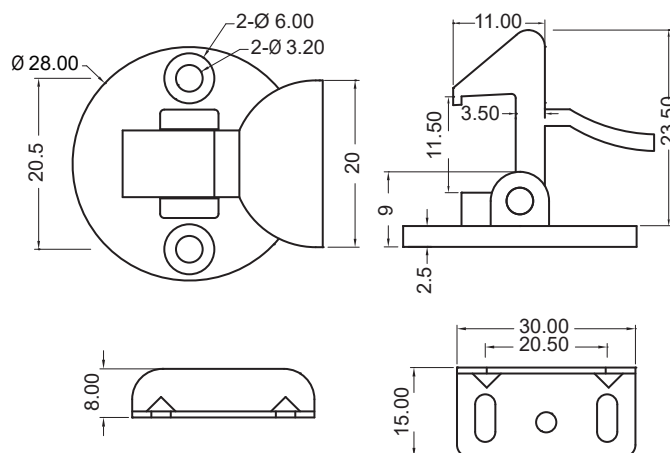
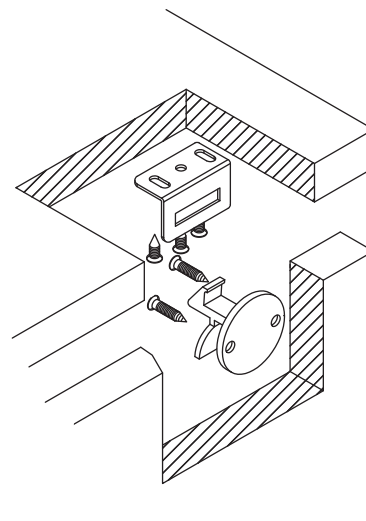
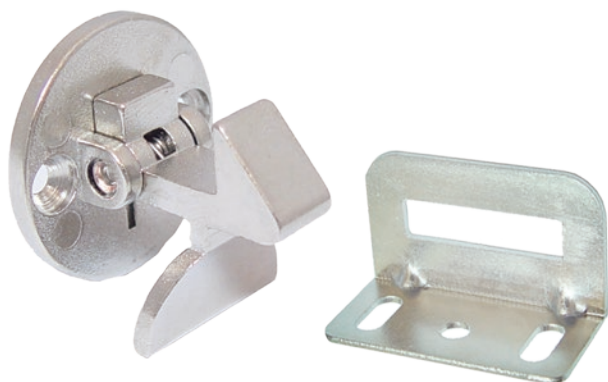


Code	Description
A0007(DS-02-8N)	L Type Strike Plate
A0007AH(DS-02/18)	L Type Strike Plate

# DISPLAY CABINET HARDWARE

## DOUBLE WOOD DOORS

### INTERNAL AUTOMATIC HOOK LATCH FOR SECOND DOOR

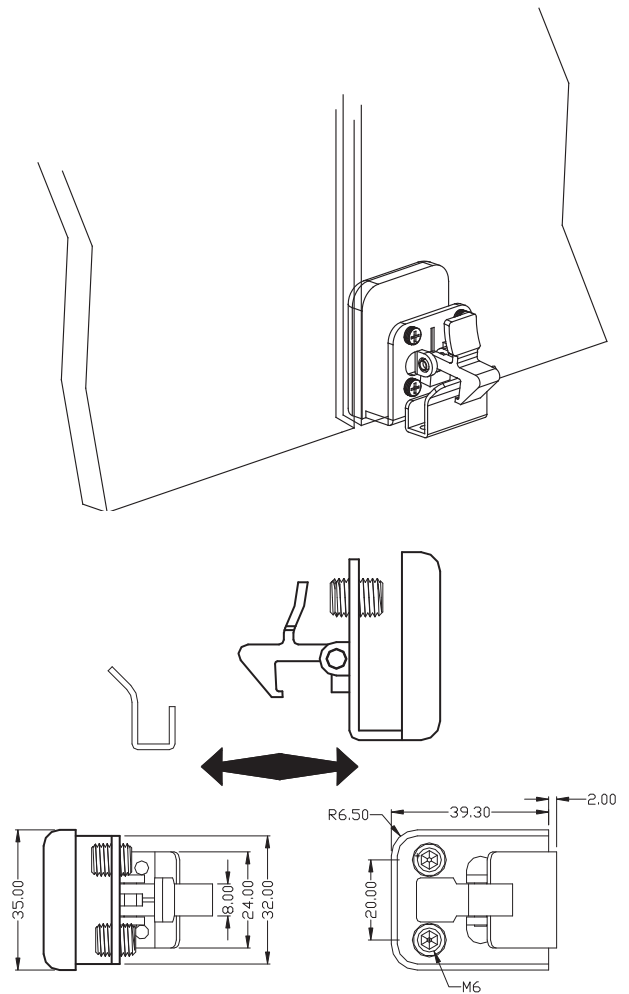


Code	Description	Material / Finish
AL-02-N	Internal hook latch for second door	Zinc / Chrome

# DISPLAY CABINET HARDWARE

## DOUBLE GLASS DOORS

### INTERNAL AUTOMATIC HOOK LATCH FOR SECOND DOOR



Code	Description	Material / Finish
AL-03-N	Internal hook latch for second door	Zinc / Chrome



# DISPLAY CABINET HARDWARE

## DOOR / DRAWER SLAM LATCHES

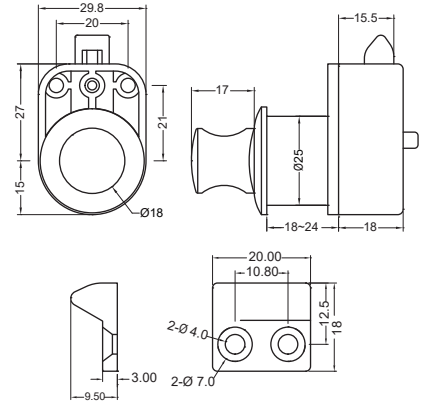
### MOTORHOME / CARAVAN / BOAT TYPE



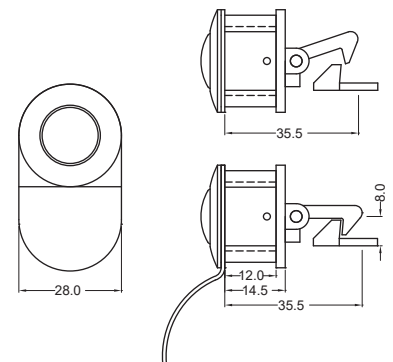
5100-##  
Showing Matt Nickel



5100-SQ-##  
Showing Chrome



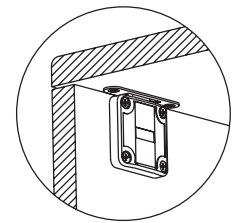
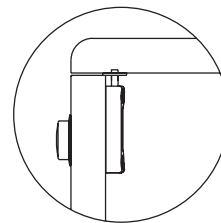
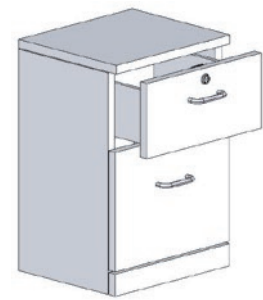
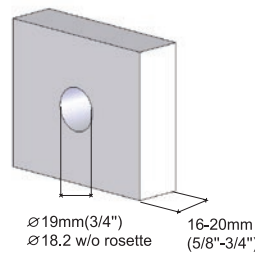
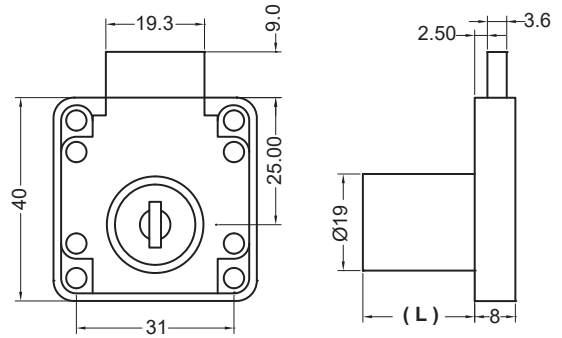
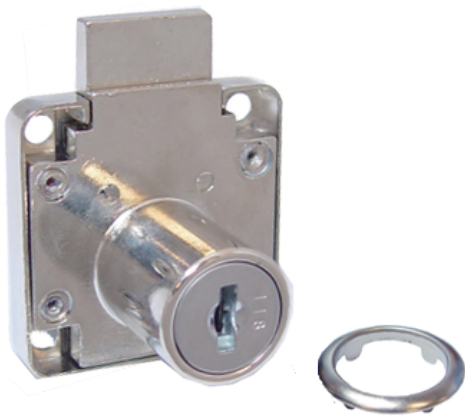
MN5100-15-V  
N5100-15-V



Code	Description	Material / Finish	Door Cut-Out (mm)
5100-MN	Round push knob slam latch	Plastic / Matt Nickel	26Dia x 18-24 Thick
5100-CH	Round push knob slam latch	Plastic / Nickel (Shiny)	26Dia x 18-24 Thick
5100-SQ-MN	Square push knob slam latch	Plastic / Matt Nickel	26Dia x 18-24 Thick
5100-SQ-CH	Square push knob slam latch	Plastic / Nickel (Shiny)	26Dia x 18-24 Thick
MN5100Z-15-V	Round push knob slam latch with hook	Plastic / Matt Nickel	(Contact us) x 13-18
N5100Z-15-V	Round push knob slam latch with hook	Plastic / Nickel (Shiny)	(Contact us) x 13-18

# DISPLAY CABINET HARDWARE

## DRAWER LOCK STEEL CHROME

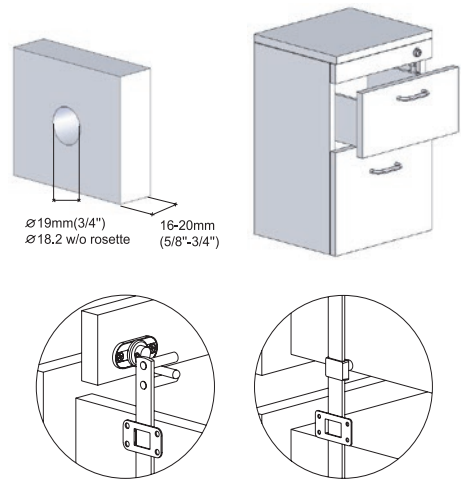
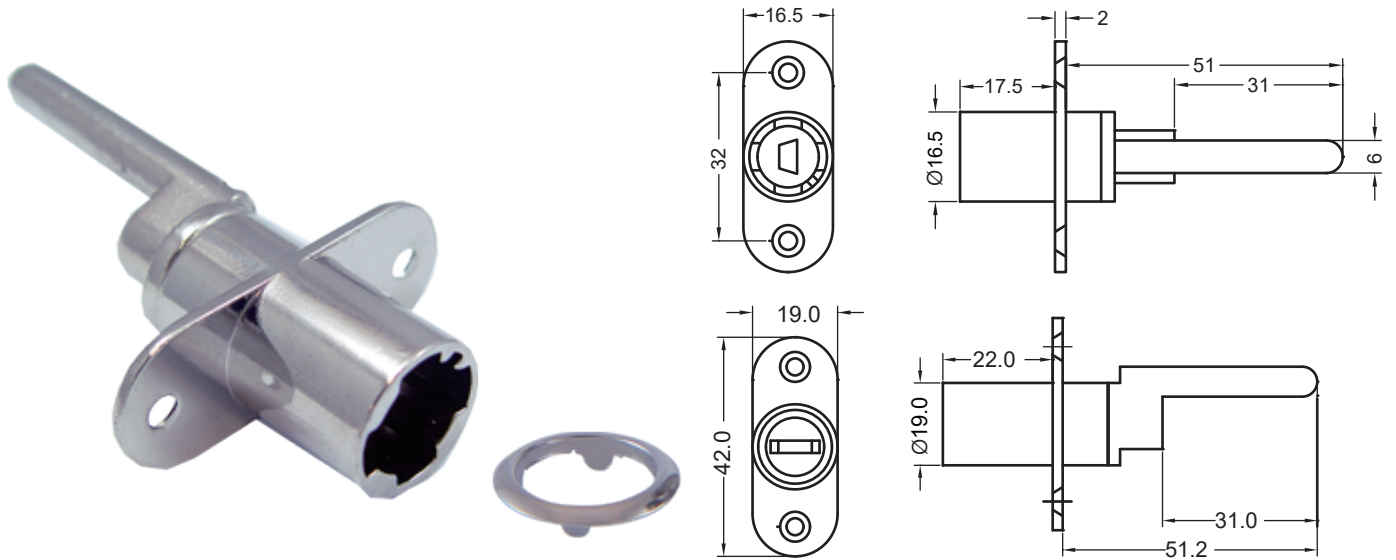


Code	Description	L (mm)	Key Type
N507-11	Complete Lock	22	KA120 (Keyed Alike)
N507-30	Complete Lock	30	KA120 (Keyed Alike)
N8100-22	Housing Only	22	Use N7000 or N8000
N8100-26	Housing Only	26	Use N7000 or N8000
N7000	Key Barrel and Keys Only		7 Series (Keyed Alike Sets / Keyed Differ)
N8000	Key Barrel and Keys Only		8 Series (Keyed Alike Sets / Keyed Differ)
KEY-M-K5-MO4	N7000 Series Master Key		
KEY-M-K2-MO4	N8000 Series Master Key		

DISPLAY CABINET HARDWARE

# DISPLAY CABINET HARDWARE

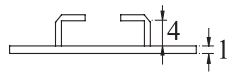
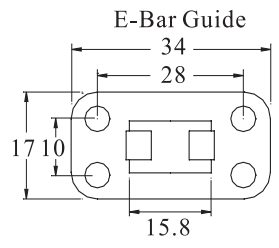
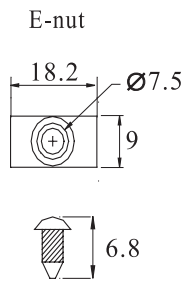
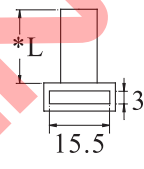
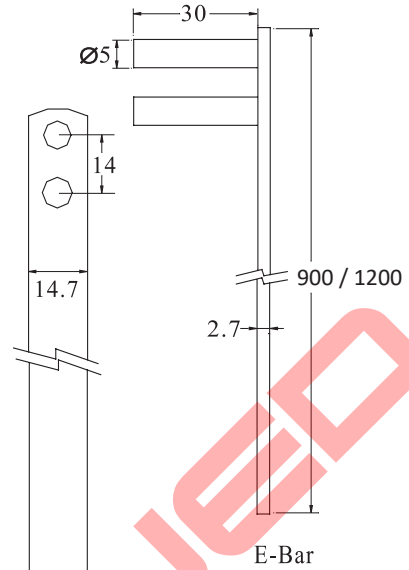
## FILING CABINET DRAWER LOCK



Code	Description	L (mm)	Key Type
N8400/19	Housing Only	22	Use N7000 or N8000
N7000	Key Barrel and Keys Only		7 Series (Keyed Alike Sets / Keyed Differ)

# DISPLAY CABINET HARDWARE

## FILING CABINET DRAWER LOCKING RODS



DISPLAY CABINET HARDWARE

Code	Description	L (mm)	Material
BRE01200801-A	1200mm locking rod, 3x pegs	8	Aluminium, Zinc, Steel
BRE0900801-A	900mm locking rod, 3x pegs	8	Aluminium, Zinc, Steel

Note: Specifications can change from time to time without notice.  
Cut-outs & construction should only be done with the products onsite.

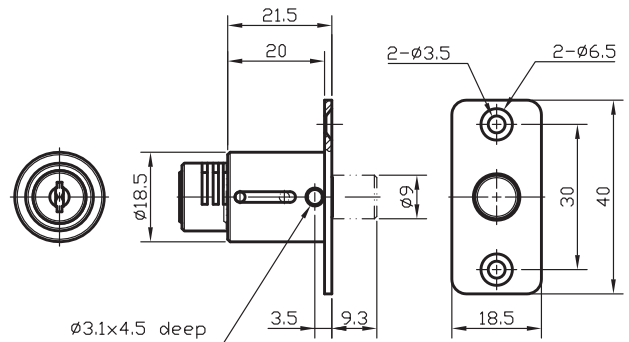
# DISPLAY CABINET HARDWARE

## PAGODA KEY HIGH SECURITY LOCKS

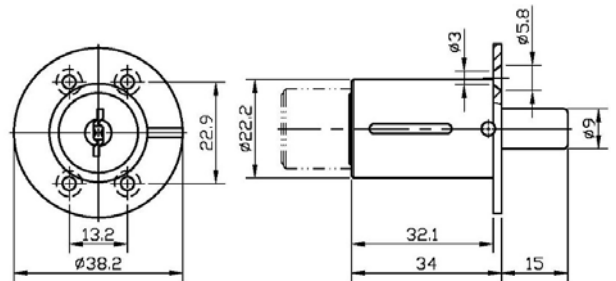
### PUSH LOCKS FOR SLIDING DOORS



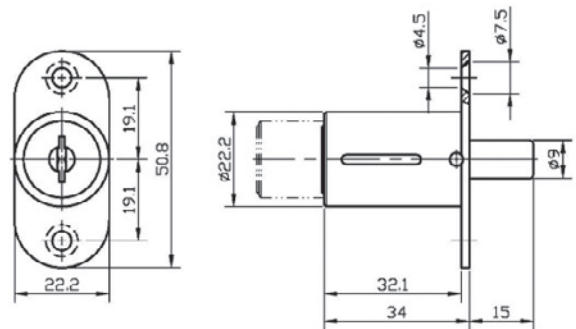
1635-KD



1775-KA



1771-KA

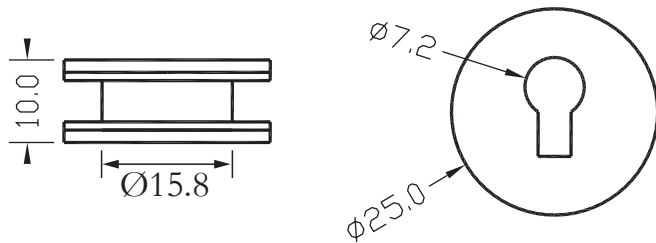
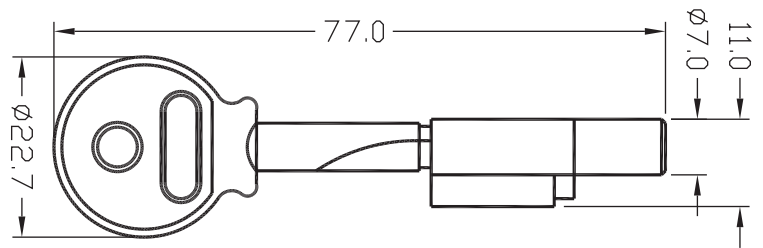
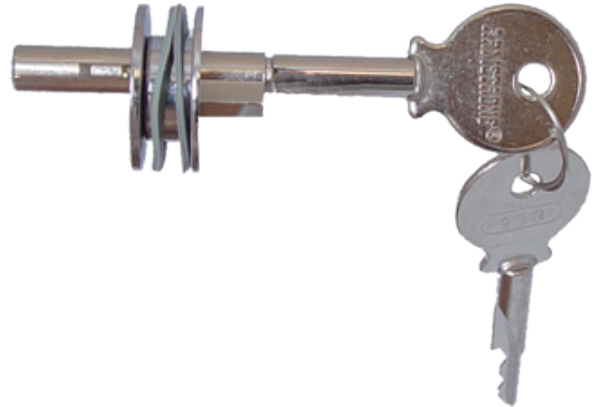
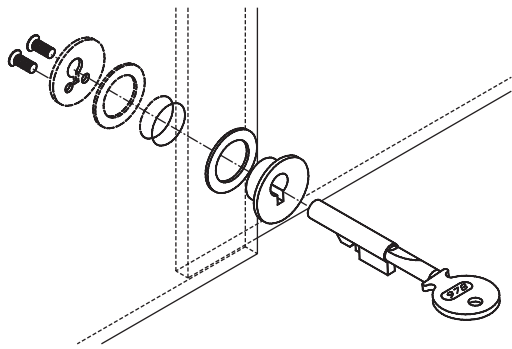


Code	Description	Hole Dia (mm)	Key Removal	Key Type
1635-KD	Plunger push lock	19	In locked position only	Keyed To Differ
1775-KS	Plunger push lock	23	In locked position only	Keyed Alike
1771-KA	Plunger push lock	23	In locked position only	Keyed Alike

# DISPLAY CABINET HARDWARE

## SLIDING GLASS DOUBLE DOORS

### PUSH LOCK



Code	Description	Key Number
C409-KA902	Glass door lock	KA902
C409-KA903	Glass door lock	KA903

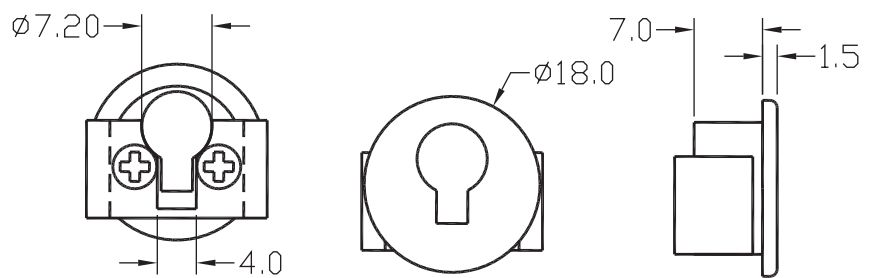
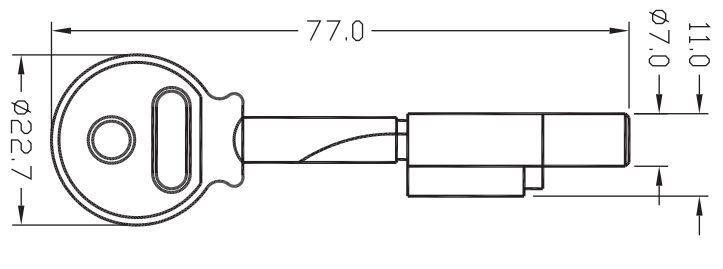
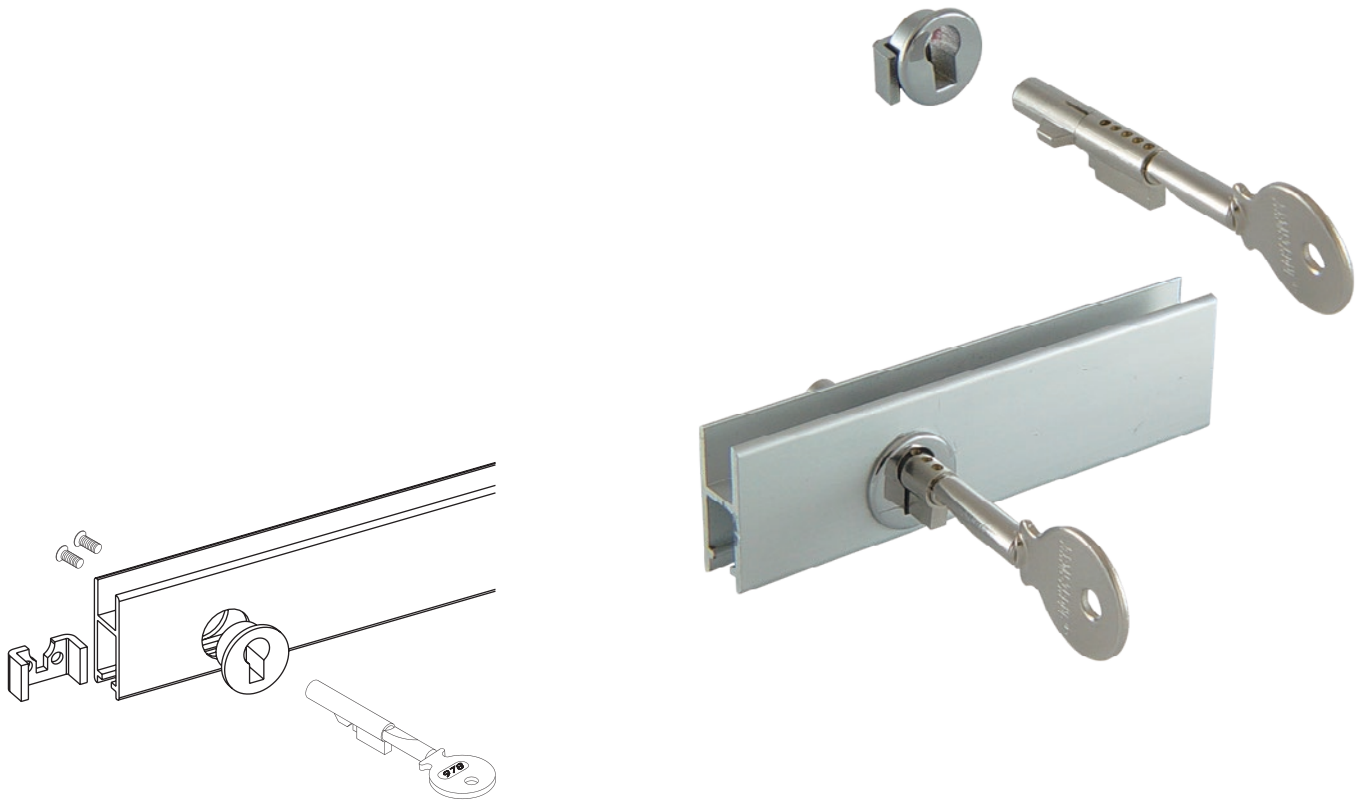
Note: Specifications can change from time to time without notice.  
Cut-outs & construction should only be done with the products onsite.

**SELECTLOK**  
NEW ZEALAND LTD

# DISPLAY CABINET HARDWARE

## SLIDING GLASS DOOR

### RAIL LOCK



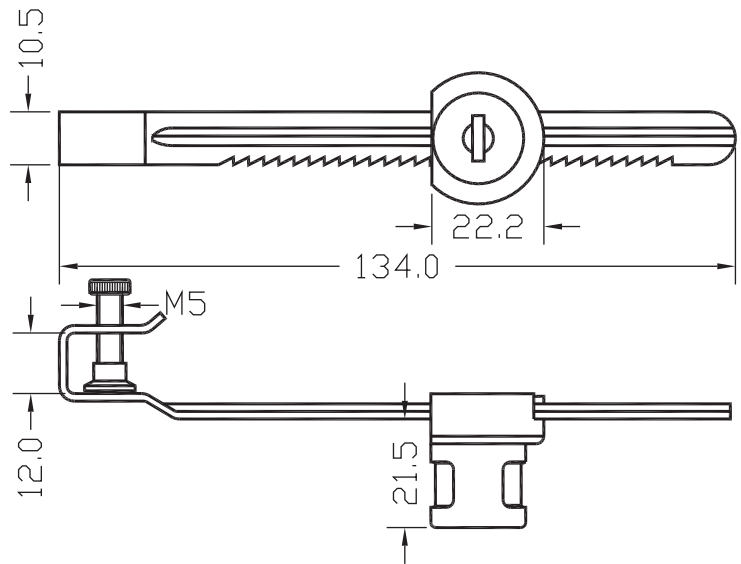
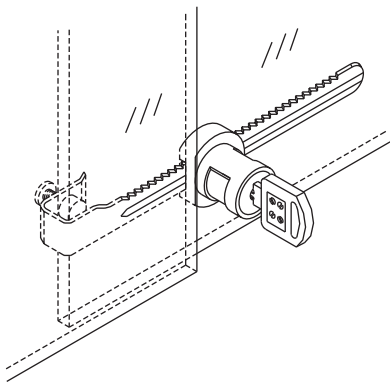
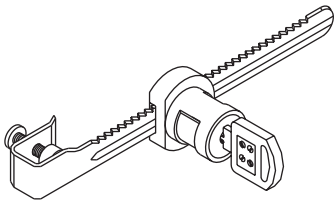
Code	Description	Key Number
C409H-KA902	Glass door lock	KA902

# DISPLAY CABINET HARDWARE

SLIDING GLASS DOUBLE DOORS

RATCHET LOCK

NO HOLE REQUIRED IN DOOR



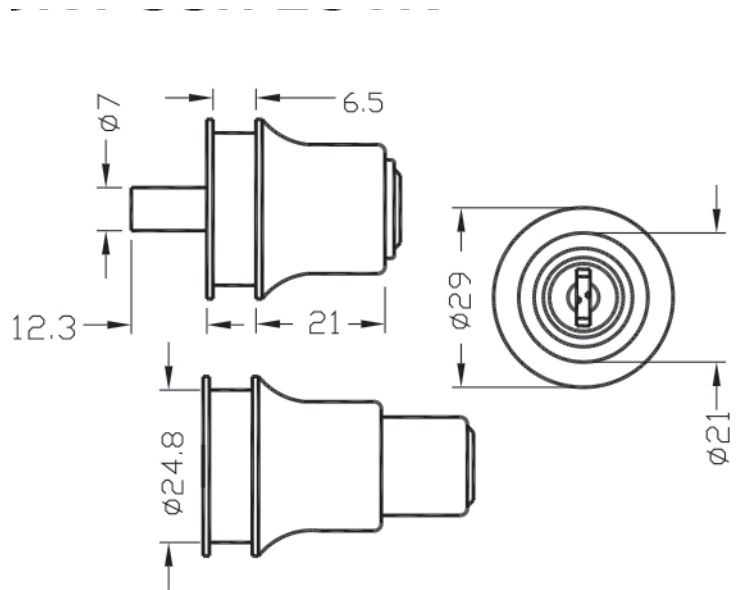
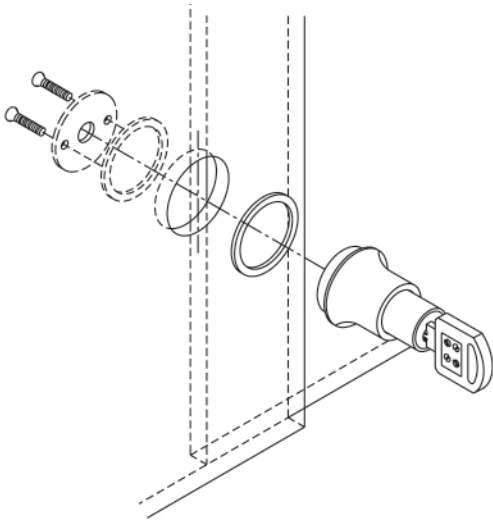
Code	Description	Key Number
C470T-KA610	Glass door lock	KA902
C470T-KD	Glass door lock	Keyed to differ



# DISPLAY CABINET HARDWARE

## SLIDING GLASS DOUBLE DOORS

### PUSH LOCK

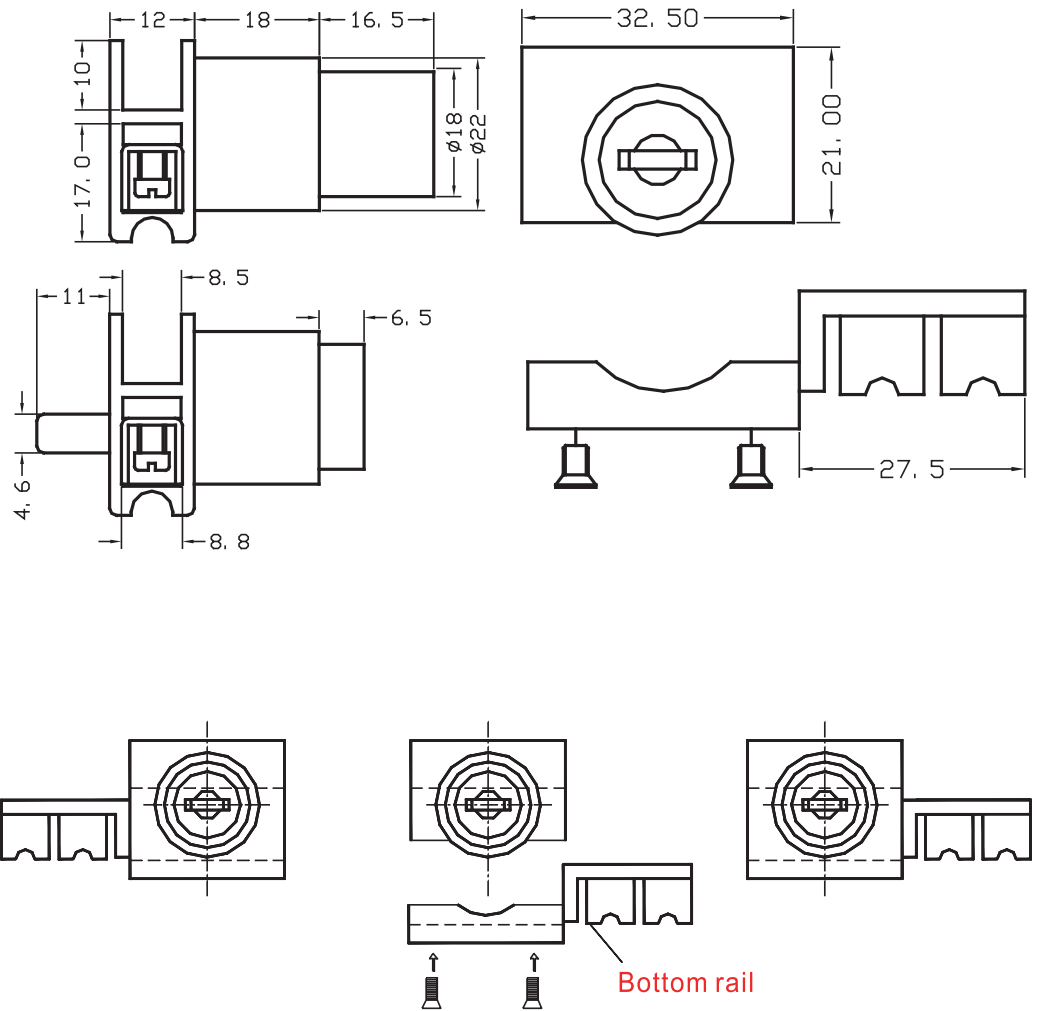
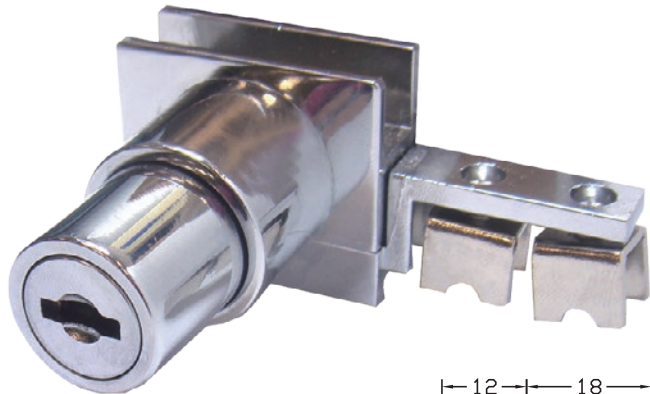


Code	Description	Glass Thickness (mm)	Key Number
C419-KA120	Glass door lock	5-6	KA120

# DISPLAY CABINET HARDWARE

## SLIDING GLASS DOOR

### PUSH LOCK FOR RAIL



DISPLAY CABINET HARDWARE

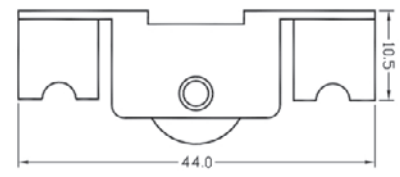
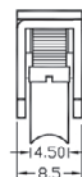
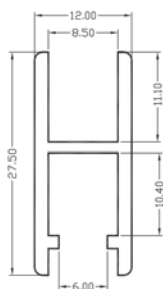
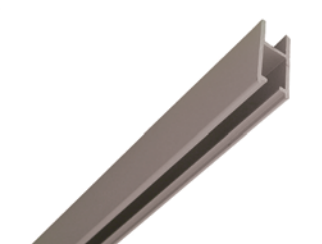
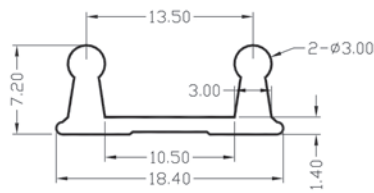
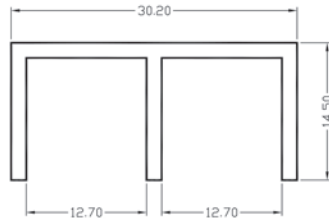
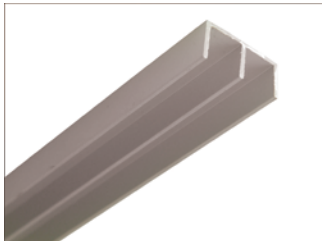
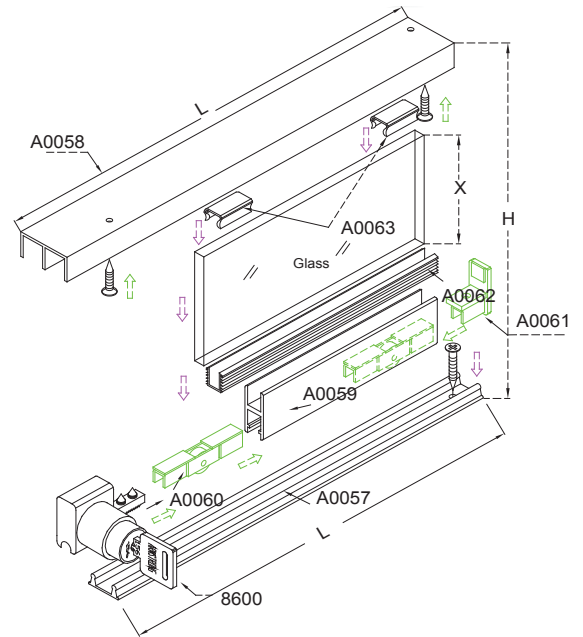
Code	Description	Glass Thickness (mm)	Key Number
C461	Glass door lock to fit A0059-461 rail	5-6	KA902

Note: Specifications can change from time to time without notice.  
Cut-outs & construction should only be done with the products onsite.

**SELECTLOK**  
NEW ZEALAND LTD

# DISPLAY CABINET HARDWARE

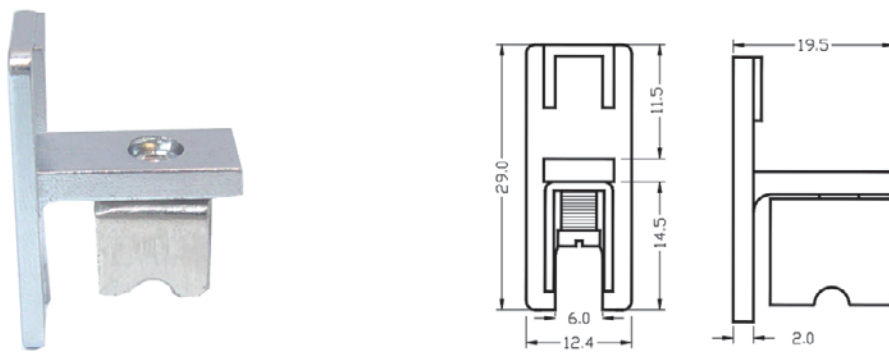
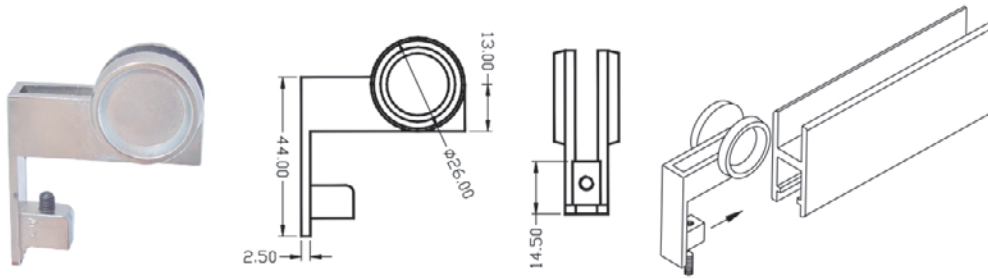
## SLIDING GLASS DOOR TRACK COMPONENTS



Code	Description	Material / Finish
A0058/2M	2M Top track	Aluminium / Grey
A0057/2M	2M Bottom track	Aluminium / Grey
A0059/2M	2M Glass rail	Aluminium / Grey
A0060B-461	Roller	Brass

# DISPLAY CABINET HARDWARE

## SLIDING GLASS DOOR TRACK COMPONENTS



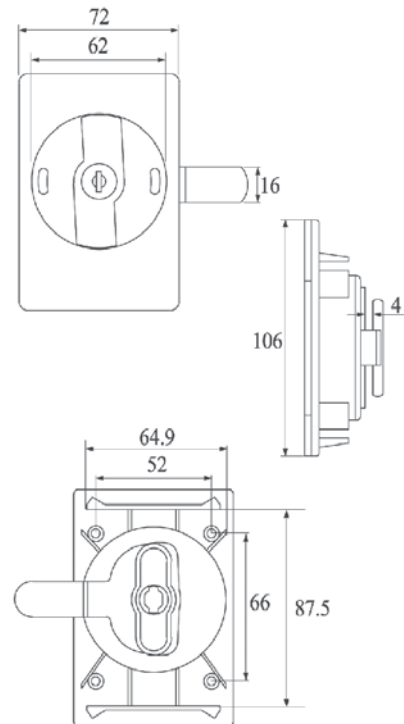
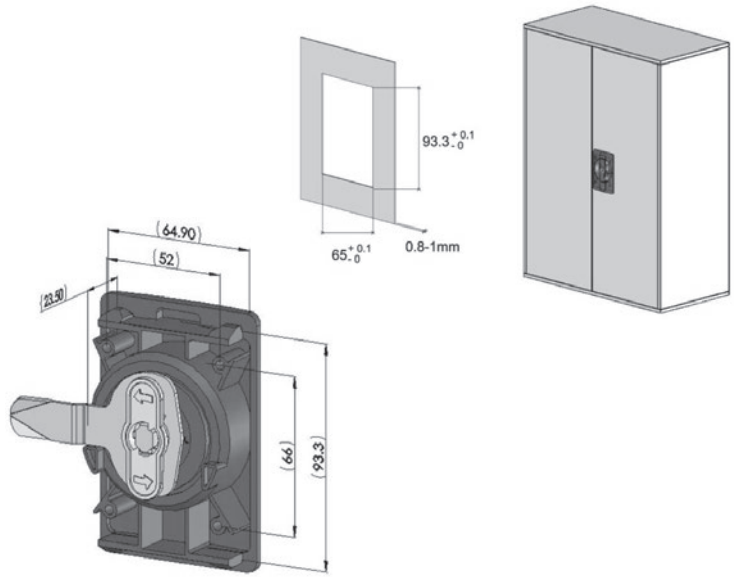
Code	Description	Material / Finish
A0061HMC	End cap with finger grip	Steel / Chrome
A0061MC	End cap	Steel / Chrome
A0062	Spline	Rubber
A0063	Silencer	Plastic

Note: Specifications can change from time to time without notice.  
Cut-outs & construction should only be done with the products onsite.

# DISPLAY CABINET HARDWARE

## LOCKER DOOR KEY LOCK

### PLASTIC



Code	Description	H-Dimension (Grip)	Key Number
LM0547.23.B.00.ZZ	Plastic flush lock	23	Keyed to differ
LM0547.23.B.00.ZZ-01	Plastic flush lock	23	0001 (Keyed alike)

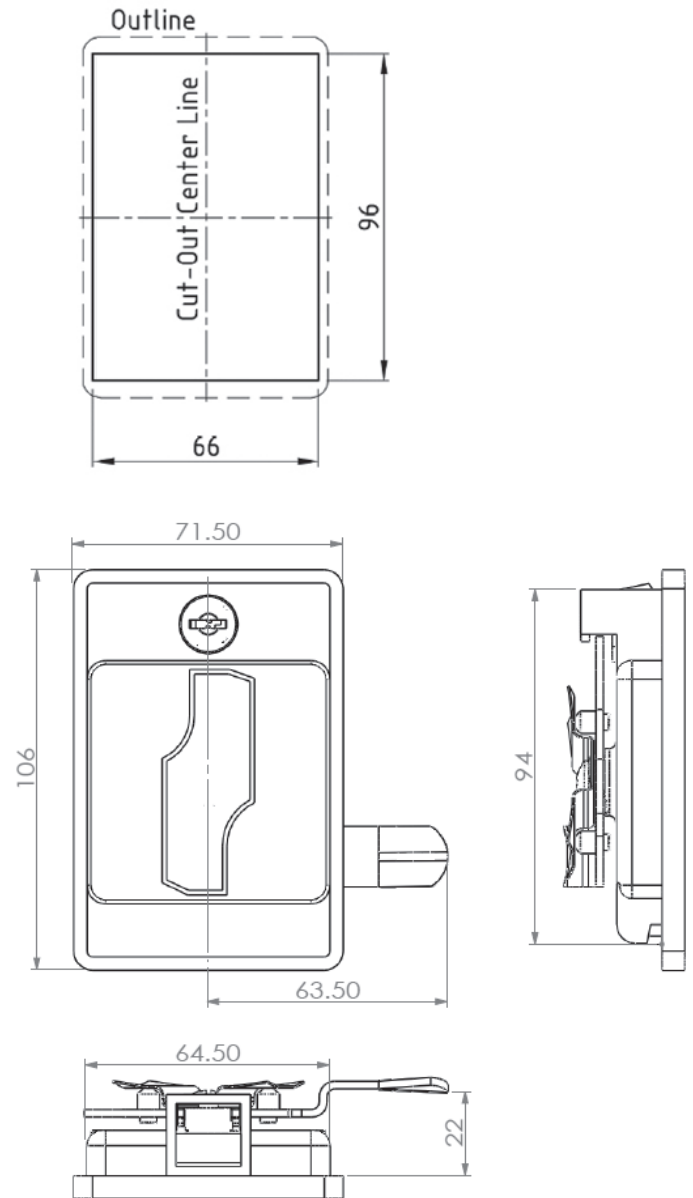
# DISPLAY CABINET HARDWARE

## LOCKER DOOR KEY LOCK

### STEEL



CUT-OUT



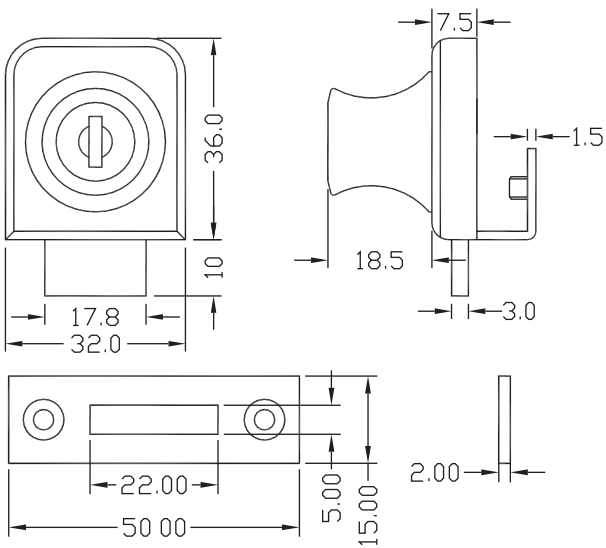
Code	Description	Cam H-Dimension	Handedness
ALFL04	Metal flush lock	22mm	LH
ALFR04	Metal flush lock	22mm	RH

Note: Specifications can change from time to time without notice.  
Cut-outs & construction should only be done with the products onsite.

# DISPLAY CABINET HARDWARE

## HINGED GLASS DOOR KNOB LOCK

### NO HOLE REQUIRED IN DOOR

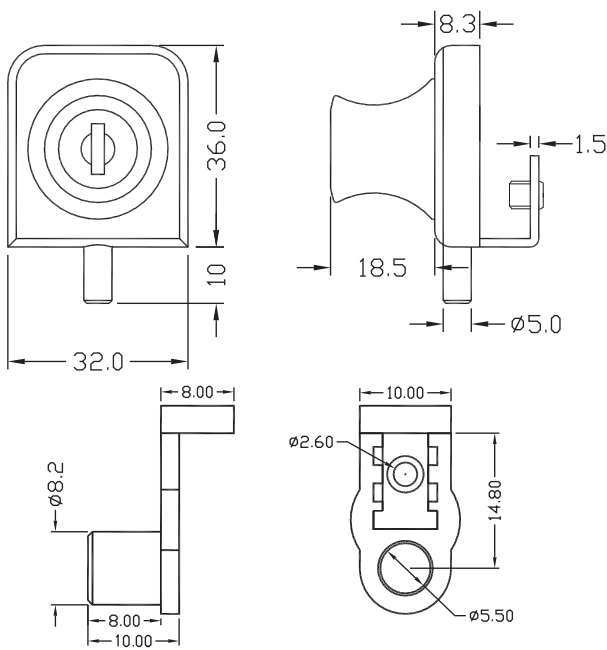
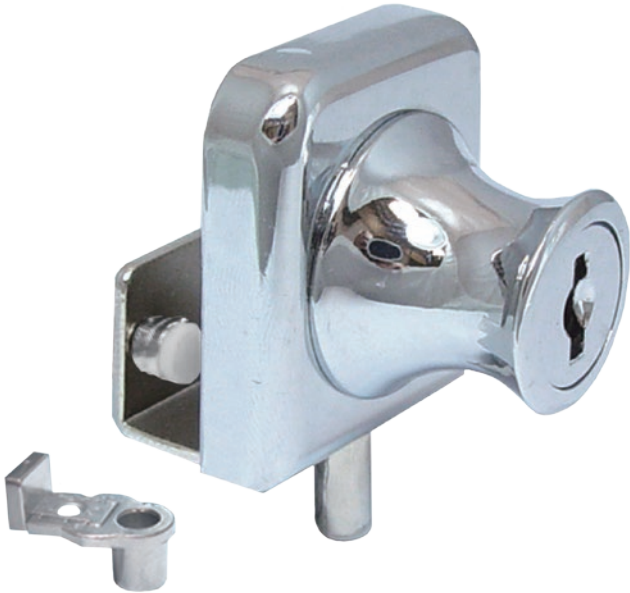


Code	Description	Glass thickness (mm)	Key Number
C407/5	Glass knob lock	5-6	KA120
C407/8	Glass knob lock	8	KA120
C407/12	Glass knob lock	12	KA120

# DISPLAY CABINET HARDWARE

## HINGED GLASS DOOR KNOB LOCK

### NO HOLE REQUIRED IN DOOR



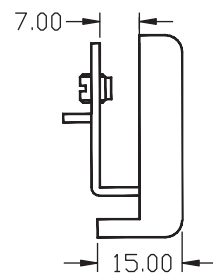
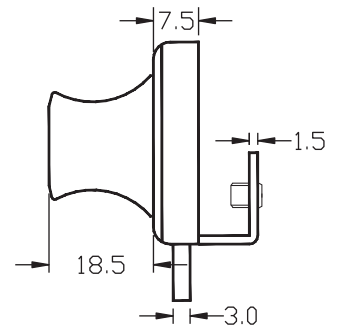
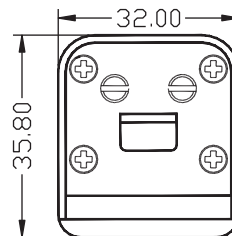
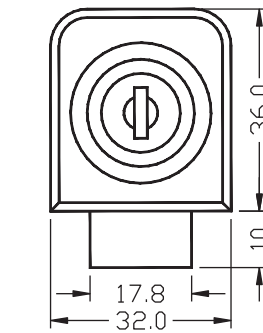
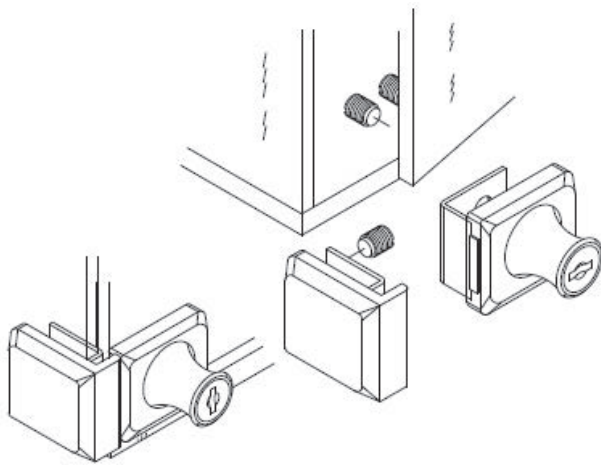
Code	Description	Glass thickness (mm)	Key Number
C407/2-5	Glass knob lock	5-6	KA120



# DISPLAY CABINET HARDWARE

## HINGED GLASS DOOR KNOB LOCK

### NO HOLE REQUIRED IN DOOR

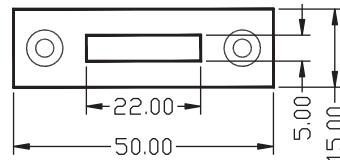
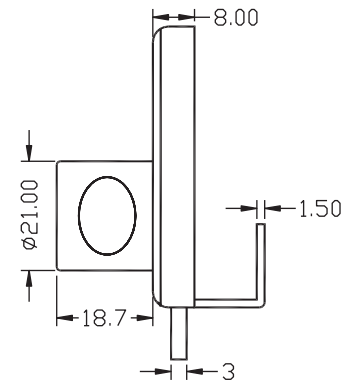
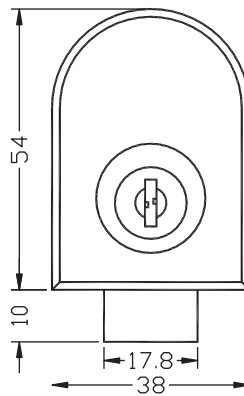
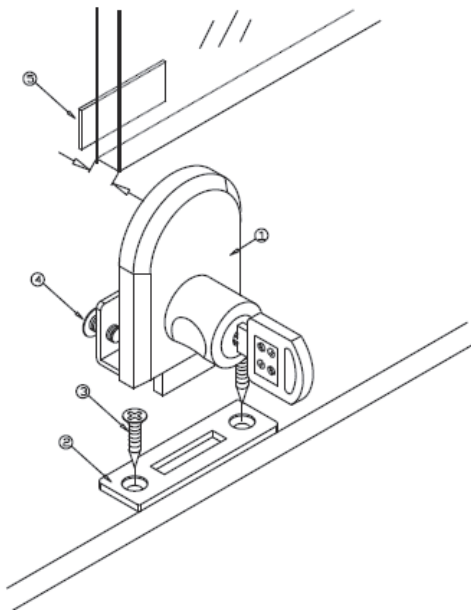


Code	Description	Glass thickness (mm)	Key Number
C407/3-5	Glass knob lock	5-6	KA120

# DISPLAY CABINET HARDWARE

## HINGED GLASS DOOR KNOB LOCK

### NO HOLE REQUIRED IN DOOR

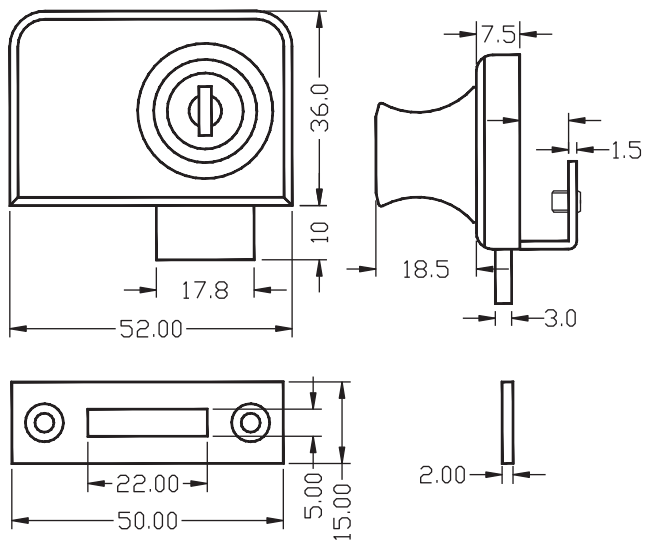


Code	Description	Glass thickness (mm)	Key Number
C408/5	Glass knob lock	5-6	KA120
C408/8	Glass knob lock	8	KA120
C408/12	Glass knob lock	12	KA120

# DISPLAY CABINET HARDWARE

## HINGED GLASS DOUBLE DOORS KNOB LOCK

### NO HOLE REQUIRED IN DOOR

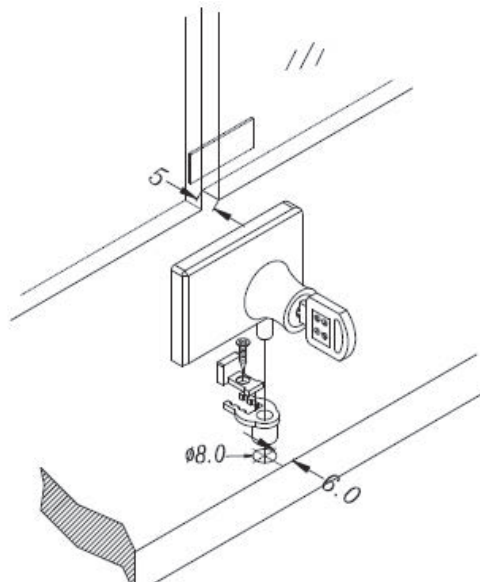
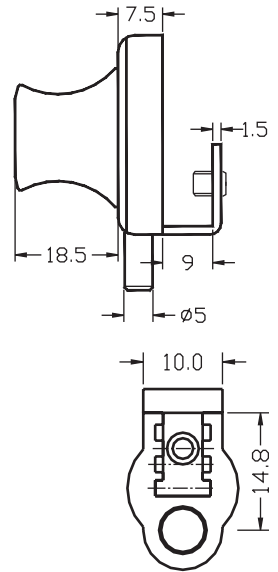
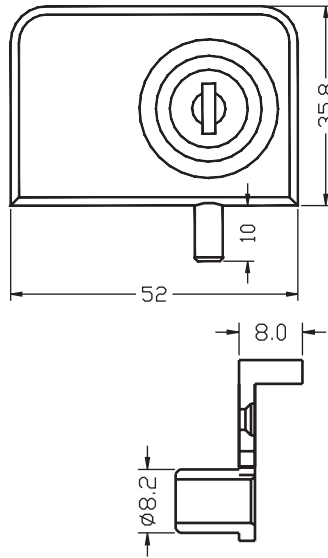


Code	Description	Glass thickness (mm)	Key Number
C417/5	Double door glass knob lock	5-6	KA120
C417/8	Glass knob lock	8	KA120
C417/12	Glass knob lock	12	KA120

# DISPLAY CABINET HARDWARE

## HINGED GLASS DOUBLE DOOR KNOB LOCK

### NO HOLE REQUIRED IN DOOR

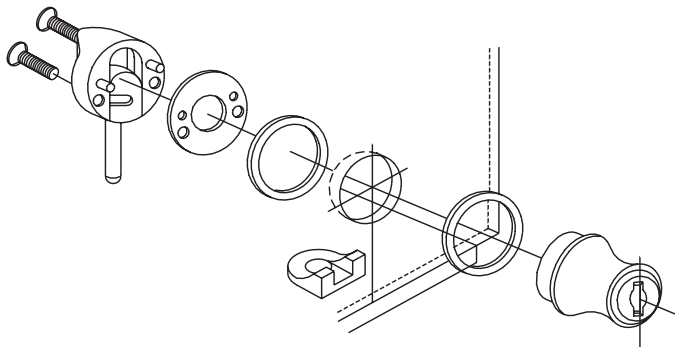
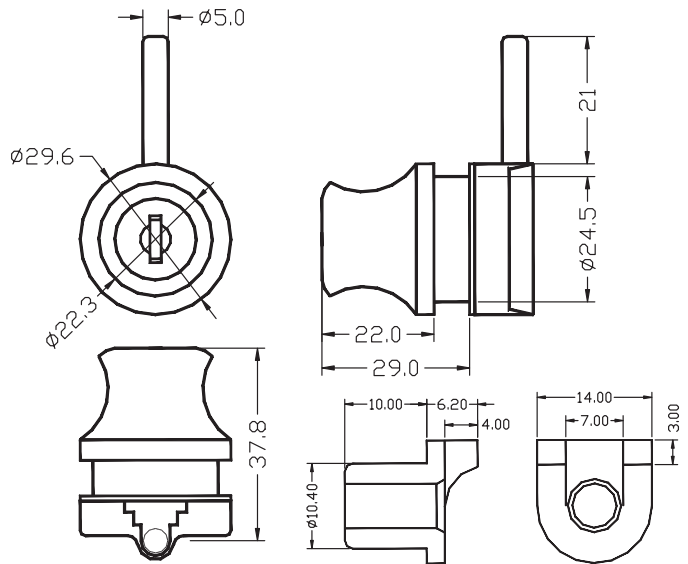


Code	Description	Glass Thickness (mm)	Key Number
C417-2/5	Glass knob lock	5-6	KA120

DISPLAY CABINET HARDWARE

# DISPLAY CABINET HARDWARE

## HINGED GLASS DOOR LOCK



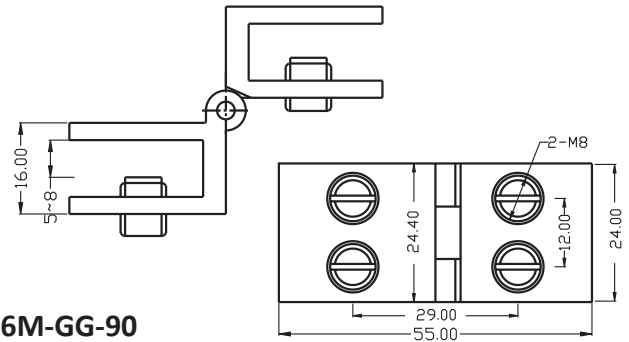
Code	Description	Glass Thickness (mm)	Key Number
C420-KA120	Glass door lock	5-6	KA120
C420-10-KA120	Glass door lock	8-10	KA120
C420-KD	Glass door lock	5-6	Keyed to differ

# DISPLAY CABINET HARDWARE

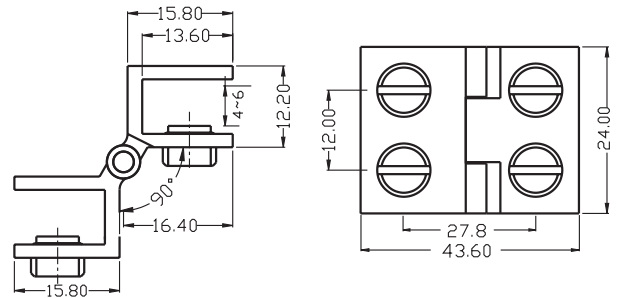
## HINGED GLASS DOOR

### DOOR HINGE GLASS TO GLASS

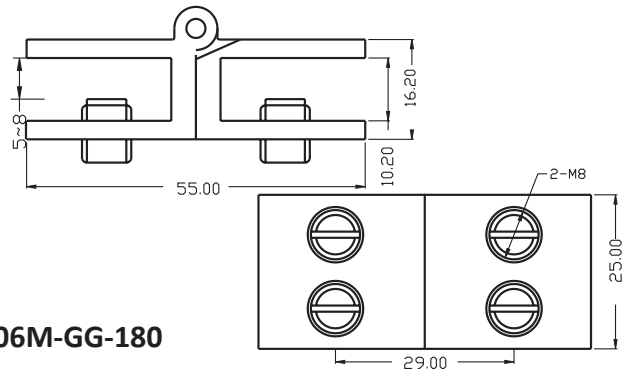
### NO HOLE REQUIRED IN DOOR



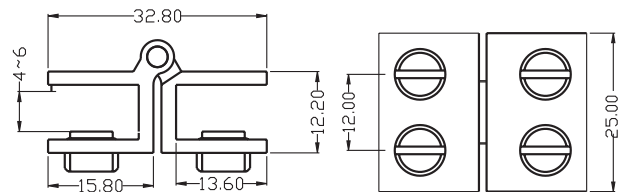
**C3010B-06M-GG-90**



**C3010B-06S-GG-90**



**C3010B-06M-GG-180**



**C3010B-06S-GG-180**

DISPLAY CABINET HARDWARE

Code	Description	Material / Finish
C3010B-06S-GG-90	90° Hinge for 4-6mm glass, 6kg total	Brass / Chrome
C3010B-06M-GG-90	90° Hinge for 5-8mm glass, 8kg total	Brass / Chrome
C3010B-06S-GG-180	180° Hinge for 4-6mm glass, 6kg total	Brass / Chrome
C3010B-06M-GG-180	180° Hinge for 5-8mm glass, 8kg total	Brass / Chrome

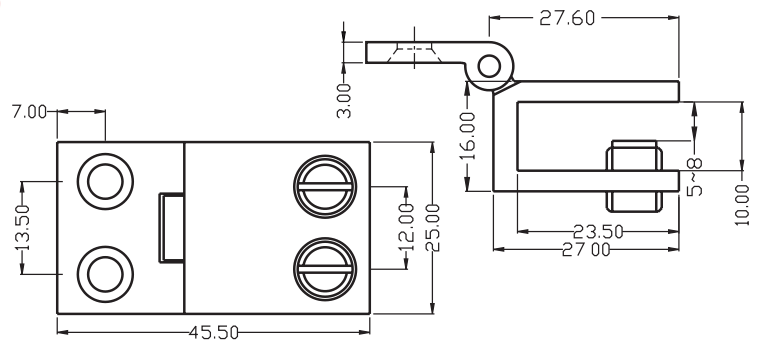
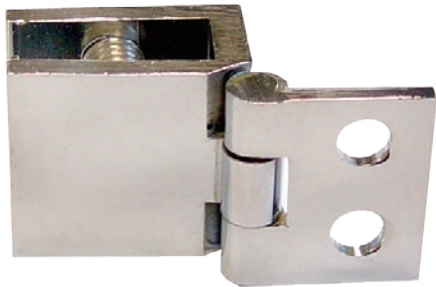
Note: Specifications can change from time to time without notice.  
Cut-outs & construction should only be done with the products onsite.

# DISPLAY CABINET HARDWARE

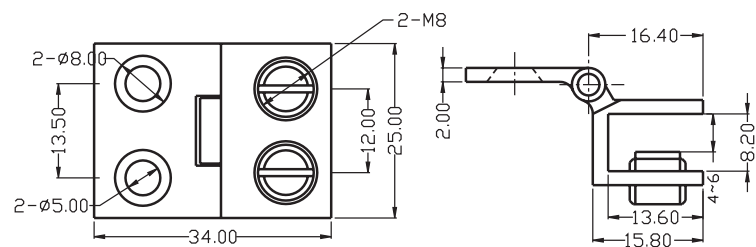
## HINGED GLASS DOOR

### DOOR HINGE GLASS TO WOOD

#### NO HOLE REQUIRED IN DOOR



**C3010B-06M-GW-90**



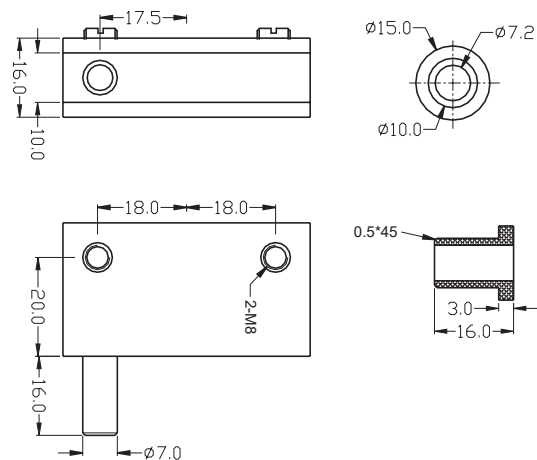
**C3010B-06S-GW-90**

Code	Description	Material / Finish
C3010B-06S-GW-90	90° Hinge for 4-6mm glass, 6kg total	Brass / Chrome
C3010B-06M-GW-90	90° Hinge for 5-8mm glass, 8kg total	Brass / Chrome

## HINGED GLASS DOOR

### DOOR HINGE PIN MOUNT

#### NO HOLE REQUIRED IN DOOR



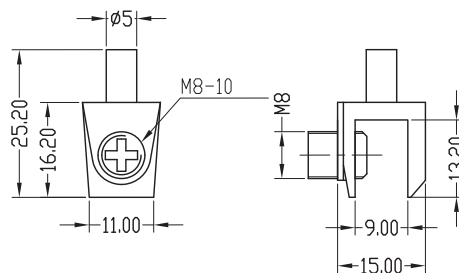
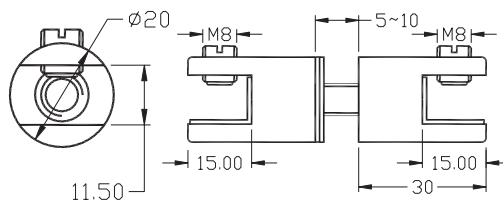
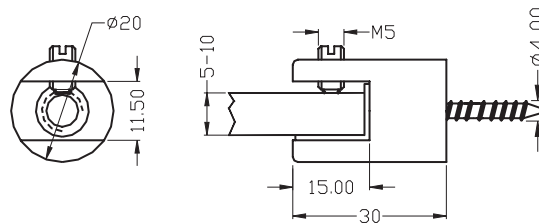
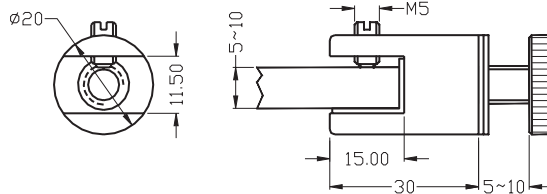
Code	Description	Material / Finish
C3010B-09-L/SCREWS	Hinge for 6-8mm glass, 10kg total	Brass / Chrome

# DISPLAY CABINET HARDWARE

## GLASS CABINET

### SHELF CONNECTORS

### GLASS TO GLASS & GLASS TO WOOD



DISPLAY CABINET HARDWARE

Code	Description	Material / Finish
C3230S-01	5-10mm glass shelf to glass wall	Steel / Chrome
C3230S-02	5-10mm glass shelf to wood wall	Steel / Chrome
C3230S-03	5-10mm glass shelf to glass shelf	Steel / Chrome
C3230Z-06	5-8mm glass shelf to wood wall	Zinc / Chrome

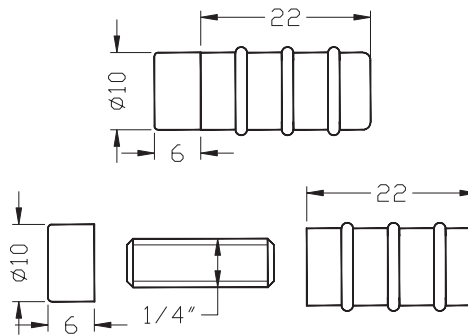
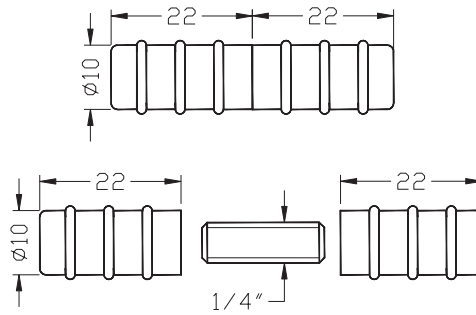
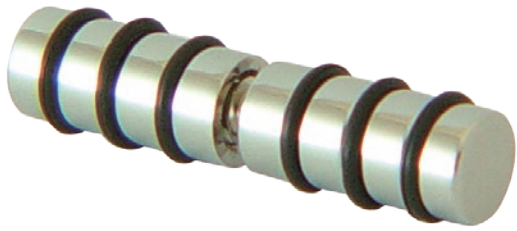
Note: Specifications can change from time to time without notice.  
Cut-outs & construction should only be done with the products onsite.

**SELECTLOK**  
NEW ZEALAND LTD



# DISPLAY CABINET HARDWARE

## GLASS CABINET SHELF SUPPORTS FOR GLASS WALL



Code	Description	Material / Finish
3230-04	Glass shelf support with rubber cushion	Steel / Chrome
3230-05	Glass shelf support with rubber cushion	Steel / Chrome

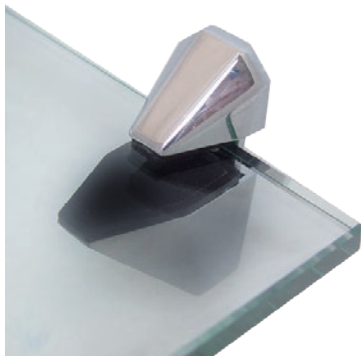
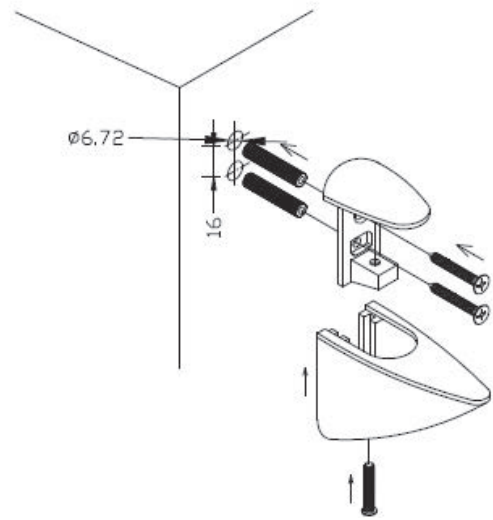
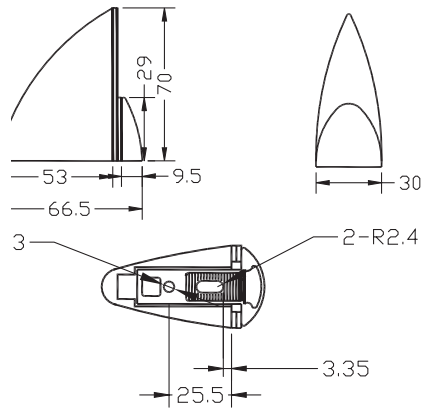
# DISPLAY CABINET HARDWARE

## GLASS CABINET

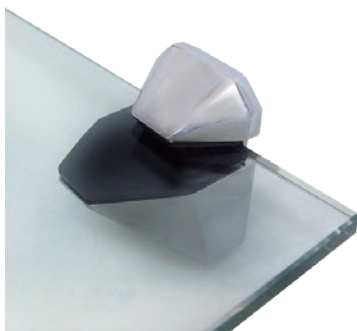
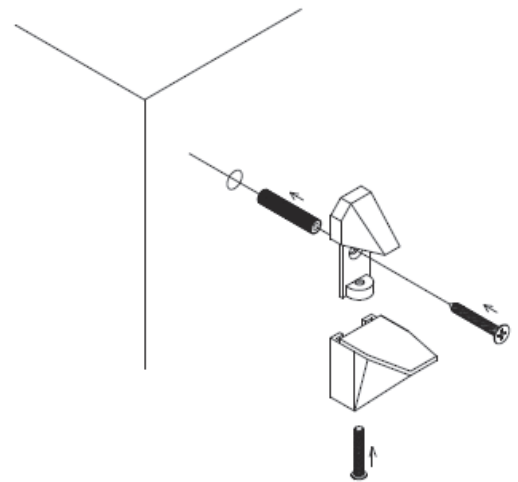
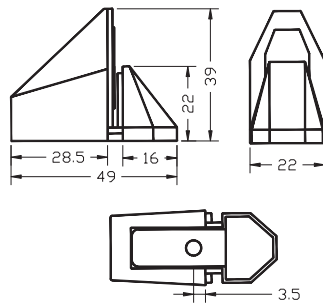
### SHELF SUPPORTS FOR WOOD WALLS



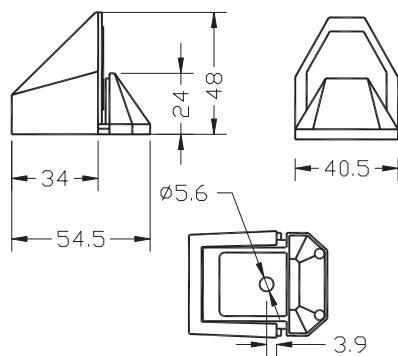
3520-01



3520-02



3520-03



Code	Description	Material / Finish
3520-01	4-12mm glass shelf support	Zinc / Chrome
3520-02	4-12mm glass shelf support	Zinc / Chrome
3520-03	4-12mm glass shelf support	Zinc / Chrome

DISPLAY CABINET HARDWARE