

<b>19</b>	<b>ELECTRONIC PRODUCTS</b>	<b>Pages</b>
	12V Jockey Wheel & Accessories	2
	Electronic Rotary Latches & Accessories	3 - 4
	Jump Solar Lithium Jump Start Kits & Accessories	5 - 7
	Jump Solar LED Light	8

## 19 ELECTRONIC PRODUCTS



# ELECTRONIC PRODUCTS

## 12V ELECTRIC JOCKEY WHEEL & ACCESSORIES

### FEATURES:

- 1590kg 12V DC 20A Electric jack
- Push button Up/Down control
- Powder coated rust-resistant construction
- Sturdy base - greater stability
- Acme rolled inner screw thread
- Motor protected with 20A fuse
- IP54

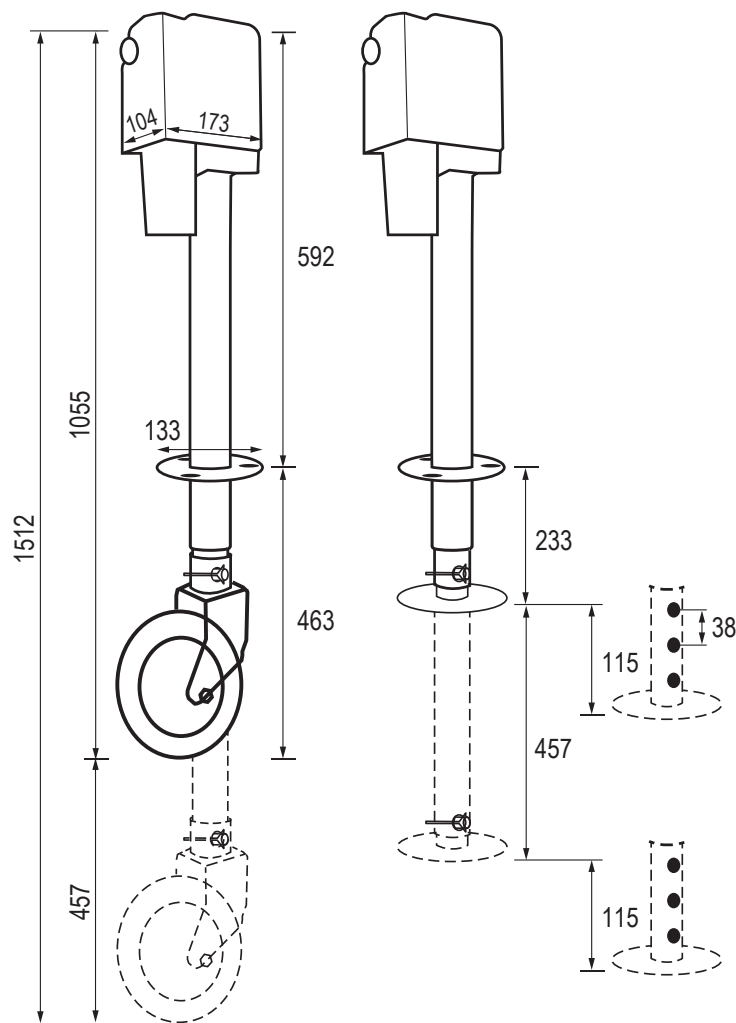
### DIMENSIONS:

Load capacity = 1590kg

Travel (Lift) = 457mm

Weight = 11.7kg

Wheel size =  $\varnothing$ 200mm (680kg Max)



TK-JW-3205



TK-DBB



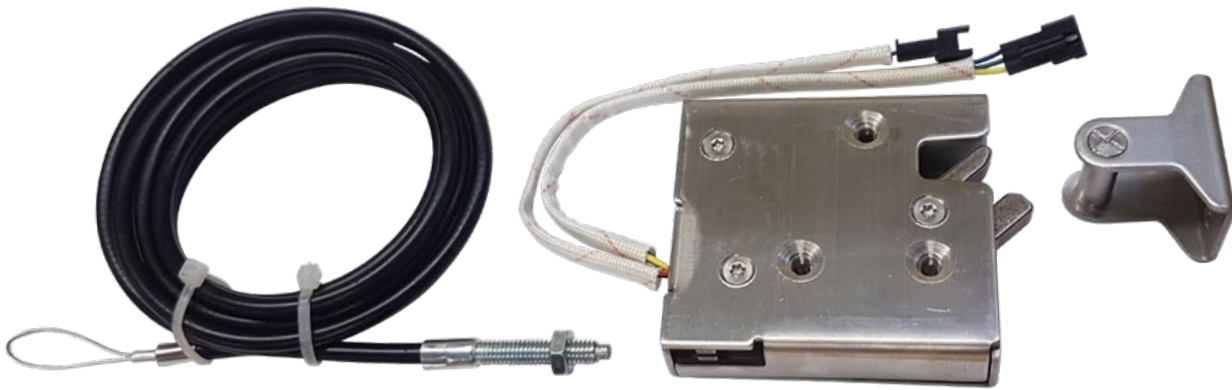
TK-LF

Code	Description
TK-JW-3205	12V DC 20A 1590kg 18" Lift Electric Jack. 200Dia x 50mm Jockey Wheel 680kg Max
TK-LF	Levelling foot attachment with 4 holes for quick height adjustment up to 115mm
TK-DBB	Draw bar bracket for attaching jockey wheel

# ELECTRONIC PRODUCTS

## ELECTRONIC SOLENOID ROTARY LATCH

### STAINLESS STEEL

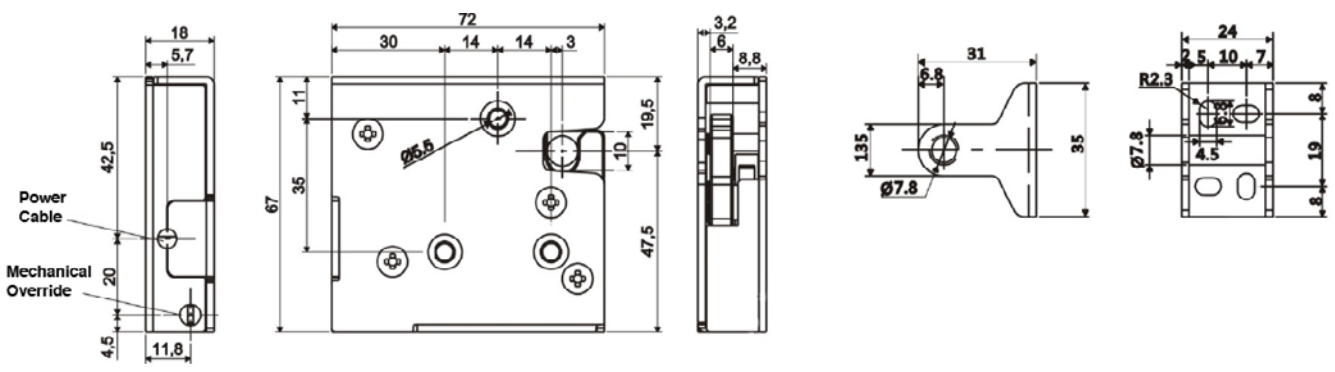


RL-CABLE-2

RL-SOL-20S-HD

Strike bolt included

- Very secure hidden latching of any door, can be unlatched remotely (electronically) with a 12V pulse from any access control interface (e.g. key fob, PIN access, RFID card, mobile app, computer network, etc)
- Compatible with 12V DC power supplies / batteries
- Solenoid motor releases cam momentarily (note: cannot “hold open” in unlatched state (for this functionality see **RL-G-20S-HD**)
- Requires positive / negative power feed pulse
- 600kg hold force • Unlatches electronically with cam loads up to 70N (~7kg)
- Internal microswitch signals door open / closed position for controlling a separate circuit (e.g. alarm system, light, etc)
- Stainless steel • IP20 • 330g Weight • Size: 72 x 72 x 18mm
- Operating temperature: -20°C to 60°C • Cycle rating: More than 1,000,000 • Fail position = locked
- 2m, 3m mechanical override cables available in case of power failure



Code	Description	Dimensions
RL-SOL-20S-HD	Electronic rotary latch with solenoid motor (momentary unlatching only)	72W x 67H x 18D
RL-CABLE-2	2m mechanical override cable	2m x 5mm Dia
RL-CABLE-3	3m mechanical override cable	3m x 5mm Dia
RL-CABLE-90	90 degree corner for RL-CABLE-3 for compact installation	33W x 20H x 12D

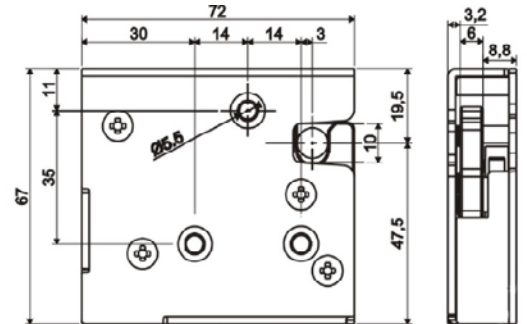
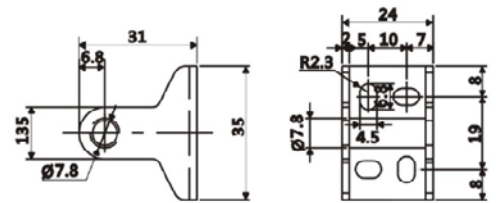
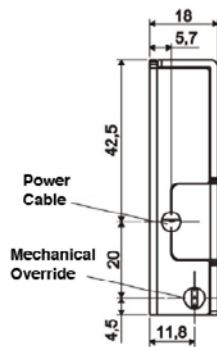
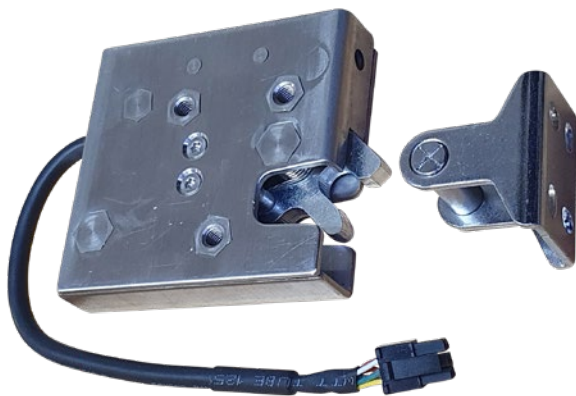
ELECTRONIC PRODUCTS

Note: Specifications can change from time to time without notice.  
Cut-outs & construction should only be done with the products onsite.

# ELECTRONIC PRODUCTS

## ELECTRONIC GEARED ROTARY LATCHES

### STAINLESS STEEL



- Very secure hidden latching of any door, can be unlatched remotely (electronically) with a 12V/24V pulse from any access control interface (e.g. key fob, PIN access, RFID card, mobile app, computer network, etc)
- Compatible with 12V / 24V DC power supplies / batteries
- Geared motor releases cam which enables “hold open” unlatched state using a time delay relay controller
- Requires positive / negative power feed and a positive signal wire to unlatch (e.g. central locking signal)
- 600kg hold force
- Unlatches electronically with cam loads up to 250kg
- Internal microswitch signals door open / closed position for controlling a separate circuit (e.g. alarm system, light, etc)
- Stainless steel • IP20 • 330g Weight • Size: 72 x 72 x 18mm
- Operating temperature: -20°C to 60°C • Cycle rating: More than 1,000,000 • Fail position = locked
- 2m, 3m mechanical override cables available in case of power failure



RL-CABLE-2



RL-CABLE-3 + RL-CABLE-90



RL-G-CONTROLLER

Code	Description	Dimensions
RL-G-20S-HD	Electronic rotary latch with geared motor (can hold unlatched)	72W x 67H x 18D
RL-G-20S-HD-IP67	IP67 Waterproof Electronic rotary latch with geared motor	72W x 73H x 18D
RL-G-CONTROLLER	12V DC time delay relay controller to control RL-G-20S-HD latch	70W x 40H x 26D
RL-CABLE-2	2m mechanical override cable	2m x 5mm Dia
RL-CABLE-3	3m mechanical override cable	3m x 5mm Dia
RL-CABLE-90	90 degree corner for RL-CABLE-3 for compact installation	33W x 20H x 12D



# JUMP SOLAR

*Lithium Jump Starter Powerbanks*

**SELECTLOK**  
NEW ZEALAND LTD

# ELECTRONIC PRODUCTS

## JUMP SOLAR

### LITHIUM JUMP START PACKS

### HEAVY DUTY 12V DIESEL ENGINE STARTING



#### The Best Jump Start Battery Packs!

- Genuine **16,000mAh Capacity** - Tested & True
- Powerful 16V output easily turns over hard to start **12V diesel and petrol engines**
- **Simple recharging** off any USB socket (car, laptop, phone charger, etc)
- LED light with Torch, SOS, Strobe modes • Compact robust zip-up **Carry Case**
- Compatible with our **Fold-Out Solar Panel** accessory for recharging in remote locations
- Buy in Confidence with our **1 Year Warranty** • **Permissible for carry-on Air Travel luggage** (Less than 100Wh)

### BEST DEVICE CHARGING JUMP START PACK

- Fast 10W Qi **Wireless Phone Charging** - place your compatible phone on top of jump pack
- **Two Fast Charge USB Ports:** USB 3.0 + USB 2.0
- Easy to Read **Digital Display** Showing Battery Percentage Remaining



Lithium battery specs:

~16.8V (fully charged) to start <6.0L 12V Diesel Engines  
 4pcs 4000mAh cells: 16,000mAh x 3.7V = **59.2Wh**  
 Amp Hours: @ 12V (EC5 Terminal): 59.2Wh ÷ 12V = **4.93Ah**  
 @ 5V (USB Socket): 59.2Wh ÷ 5V = **11.84Ah**

**16,000MAH**

Code	Engine Starting	Special Feature
JS-Q2-16V	≤6L 12V Diesel or Petrol	Wireless phone charge

### BEST ROADSIDE RESCUE JUMP START PACK

- 40psi Air Compressor for **Emergency Roadside Tyre Inflation**, also bicycles, balls etc.
- Single **Fast Charge USB Port:** 2.8A

Lithium battery specs:

~16.8V (fully charged) to start <6.0L 12V Diesel Engines  
 4pcs 4000mAh cells: 16,000mAh x 3.7V = **59.2Wh**  
 Amp Hours: @ 12V (EC5 Terminal): 59.2Wh ÷ 12V = **4.93Ah**  
 @ 5V (USB Socket): 59.2Wh ÷ 5V = **11.84Ah**



**16,000MAH**

Code	Engine Starting	Special Feature
JS-AIR-16V	≤6L 12V Diesel or Petrol	Integral tyre inflator

# ELECTRONIC PRODUCTS

JUMP SOLAR

LITHIUM JUMP START PACKS

ACCESSORIES

# JUMP SOLAR

Solar Chargeable Battery Starter Pack



**JS-Q2-PANEL**  
Fold out Solar Panel



**JS-Q2-ADAPTOR**



**JS-Q2-PL**



**JS-LED-EC5**



**JS-LED-SPLITTER**



**JS-Q2-JL**



**JS-18-JL**

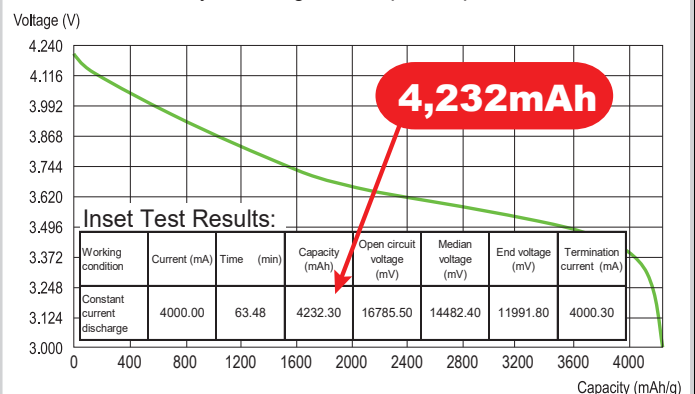
Code	Description	Compatible With
JS-Q2-PANEL	Fold Out 18V 0.78A Solar Panel	JS-Q2-16V, JS-AIR-16V
JS-Q2-ADAPTOR	USB-C to DC Adaptor Cable for Solar Panel	JS-Q2-16V, JS-AIR-16V, JS-Q2-PANEL
JS-Q2-PL	4-Way USB Phone Cables	JS-Q2-16V, JS-AIR-16V
JS-LED-EC5	EC5 to Cigarette Socket Adaptor (16V)	JS-Q2-16V, JS-AIR-16V, JS-LED-7W3K
JS-LED-SPLITTER	3-Way Cigarette Socket Splitter	JS-LED-EC5, JS-LED-7W3K
JS-Q2-JL	Jump Cables With Electronic Protection	JS-Q2-16V, JS-AIR-16V
JS-18-JL	Jump Cables Without Electronic Protection	

## Why is Jump Solar the best?

Jump Solar is a trusted brand with genuine, tested battery capacity. For example, Our models have 16000mAh which is achieved by using 4pcs of high quality 4000mAh lithium batteries from a reputable supplier with supporting test reports and discharge testing. In fact these cells average 4232mAh in testing, which means the jump pack is actually closer to 17000mAh.

Beware other brands claiming larger capacities from similar sized or smaller battery packs - if it sounds too good to be true it probably is. It is easy to print any old number on a product, however there is no new magic battery technology. **The reality is larger capacity = larger product size.**

Lithium Battery Discharge Test: 1pc Jump Solar 4,000mAh



Note: Specifications can change from time to time without notice. Cut-outs & construction should only be done with the products onsite.

**SELECTLOK**  
NEW ZEALAND LTD

# ELECTRONIC PRODUCTS

## JUMP SOLAR

### VERSATILE LED LIGHT

# JUMP SOLAR

Versatile High Power LED Light

www.jumpsolar.co.nz

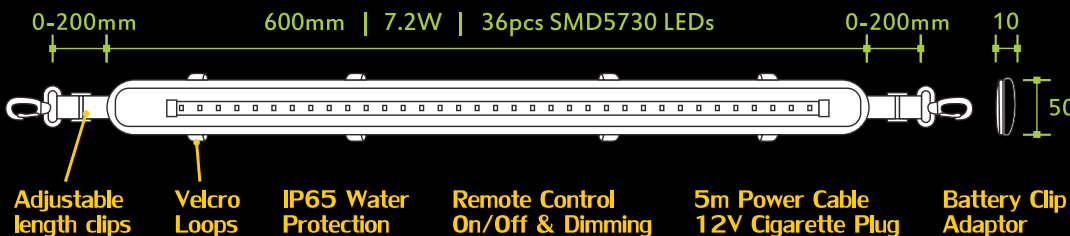
Model: JS-LED7W3K

- Remote Control On/Off/Dimming
- 7W, 700 Lumens, 3000°K Warm (Comfortable) White
- IP65 Water Rating
- 3 Year Warranty
- High Quality Epistar SMD5730 LEDs
- Accessory cable available to power off JUMP SOLAR Lithium Battery!



#### Versatile and Easy to Use!

- Programmable - one remote can control multiple lights
- Velcro loops - attach to poles / branches
- Adjustable length caribiner clips - attach to eyelets / rope
- 12V Cigarette plug with 5m long power cable
- Alligator clips for powering off 12V battery terminals
- Get more than 9 hours run-time at full brightness off fully charged Jump Solar Battery. (Longer run-times when dimmed).



Code	Description	Specification
JS-LED-7W3K	Dimmable LED Light	7W 700 Lumen 3000°K Light
JS-LED-EC5	EC5 Adaptor Cable	To power LED light off JS-18000
JS-LED-SPLITTER	3-Way Cigarette Socket Splitter	To power 3 lights off one socket