

11	HINGES	Pages
	Continuous Hinges: Piano, Tila, Centaflex	2 - 5
	Lift Off Hinges: Weld-on, Butt, Pintle	6 - 13
	Butt Hinges: Marine, Fast-Fix, Spring, Standard	14 - 23
	Butt Torque Hinges	24 - 26
	Offset Pin Hinges	27 - 28
	Strap Hinges	29 - 30
	Truck / Container Door Hinges	31 - 36
	Concealed & Semi-Concealed Hinges	37 - 53

11 HINGES



HINGES

CONTINUOUS

PIANO

GALVABOND & STAINLESS STEEL

- Galvabond zinc treated steel, or 304 stainless steel
- 1800mm Long
- Unpunched (no holes)



304 Stainless steel



Galvabond

Code	Material	Open Width (mm)	Thickness (mm)	Pin Dia (mm)	Length (mm)	Predrilled Holes	Open Angle (°)
HIP32	Galvabond	32	1.2	3	1800	None	270
HIP38	Galvabond	38	1.2	3	1800	None	270
HIP50	Galvabond	50	1.2	3	1800	None	270
HIP60	Galvabond	60	2.5	6	1800	None	270
HIP80	Galvabond	80	2.5	6	1800	None	270
HIP32-SS	304 S/Steel	32	1.2	3	1800	None	270
HIP38-SS	304 S/Steel	38	1.2	3	1800	None	270
HIP50-SS	304 S/Steel	50	1.2	3	1800	None	270
HIP60X1.5-SS	304 S/Steel	60	1.5	6	1800	None	270
HIP60X2.5-SS	304 S/Steel	60	2.5	6	1800	None	270
HIP80-SS	304 S/Steel	80	2.5	6	1800	None	270

Note: Specifications can change from time to time without notice.
Cut-outs & construction should only be done with the products onsite.

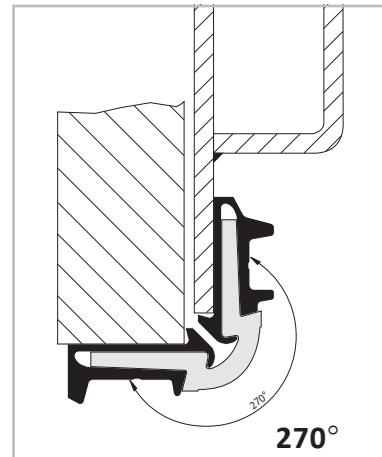
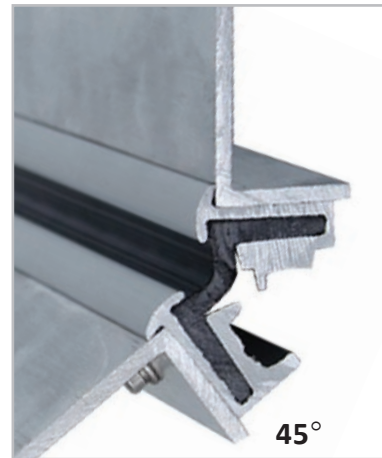
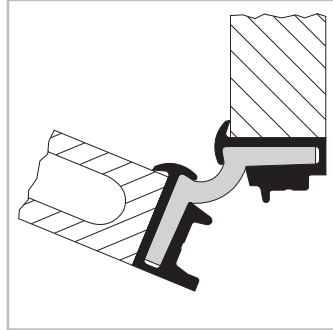
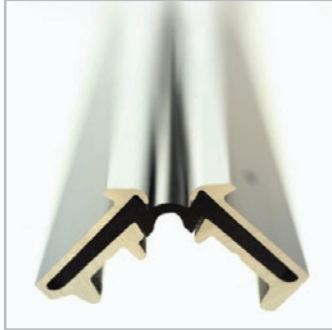
SELECTLOK
NEW ZEALAND LTD

HINGES

CONTINUOUS

TILA

WEATHERPROOF



- Hinge and seal all in one with concealed fixings
- Strong, durable, maintenance free weather proof hinge
- 180° and 270° opening profiles
- Suitable for personnel doors, food truck verandahs, tailgates, covers, flaps, lids
- European made precision, used for more than 20 years
- E6 EV1 Anodised aluminium (AlMgSi 0.5) extrusion with black polyurethane elastomer hinge/seal
- Supplied 75° open for ease of installation
- Temperature resistant from approx -40°C to +80°C. Can withstand short exposure to +120°C without damage
- Hydrolysis and bacteria resistant

Note:

The technical data is intended as a guide only. As with many 'synthetic' materials, care should be taken when subjecting the hinge to specific and specialised influences which may have unexpected detrimental effects. These include hydrolysis, microbe infestation, sudden mechanical stresses (e.g. sudden opening) in conjunction with extremely low temperatures, corrosive acids, alkaline solutions and cleaning agents



See over page for profiles available and ordering codes

HINGES

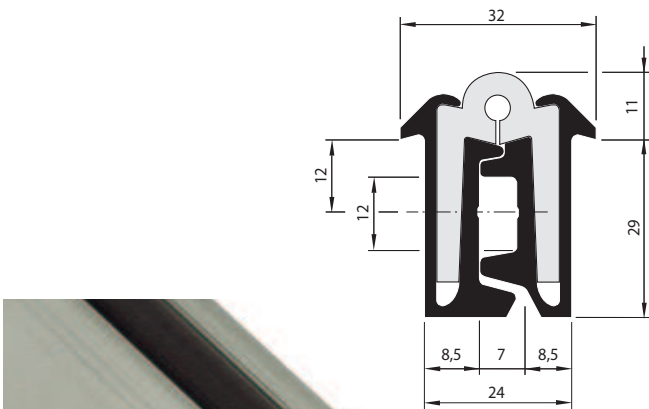
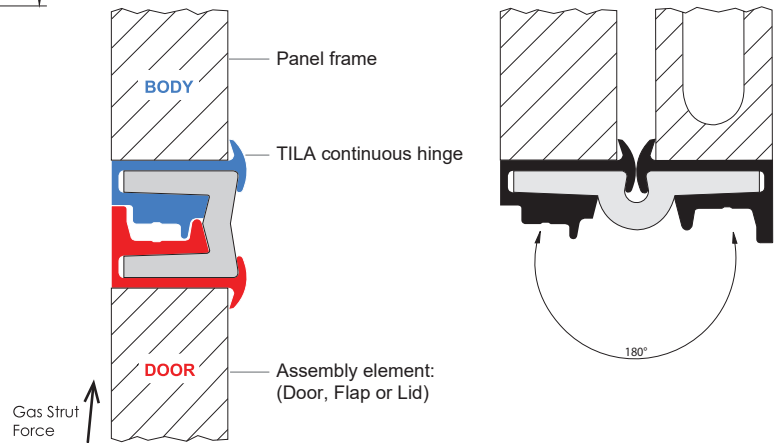
CONTINUOUS

TILA

WEATHERPROOF

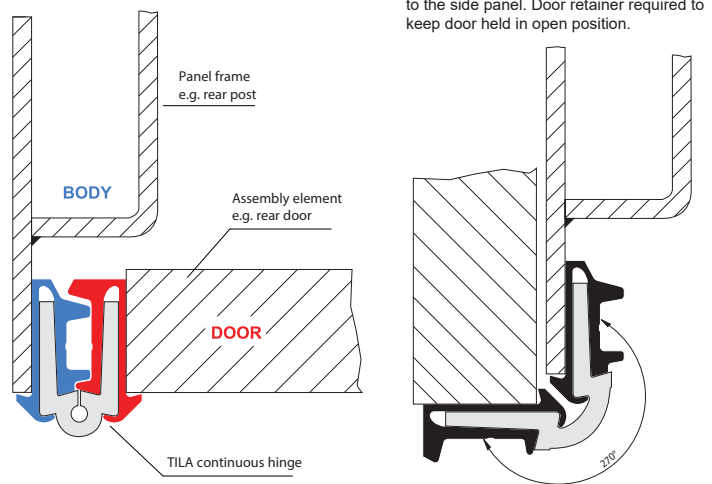


631218



631262
631270

Take note of correct orientation of hinge for installation



See previous page for more information

Code	Length (mm)	Closed Height (mm)	Predrilled Holes	Material	Open Angle (°)	Installation Gap (mm)	Mounting Surface (mm)
631218	1800	32	4Dia x 100	Anodised Alu	180	24	22
631262	2200	32	5Dia x 200	Anodised Alu	270	24	29
631270	3000	32	5Dia x 200	Anodised Alu	270	24	29

Note: Specifications can change from time to time without notice. Cut-outs & construction should only be done with the products onsite.

HINGES

CONTINUOUS

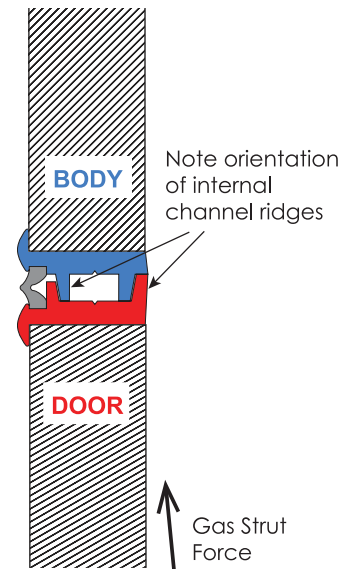
CENTAFLEX

WEATHERPROOF

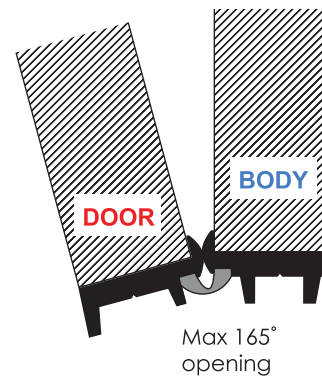
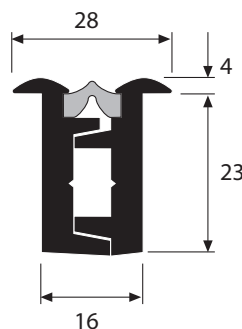
- Hinge and seal all in one with concealed fixings
- Strong, durable, maintenance free weather proof hinge
- 165° opening angle
- Designed for horizontal installation, suitable for food truck verandahs, tailgates, covers, flaps, lids
- PVC extrusion with Polyester elastomer hinge/seal
- Temperature resistant from approx -40°C to +50°C.
- Safe working load of 100kg per metre
- Tested to over 50,000 opening/closing cycles
- Hydrolysis and bacteria resistant

Note:

The technical data is intended as a guide only. As with many 'synthetic' materials, care should be taken when subjecting the hinge to specific and specialised influences which may have unexpected detrimental effects. These include hydrolysis, microbe infestation, sudden mechanical stresses (e.g. sudden opening) in conjunction with extremely low temperatures, corrosive acids, alkaline solutions and cleaning agents



CF-2231

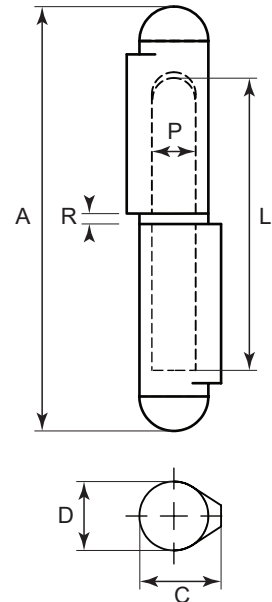
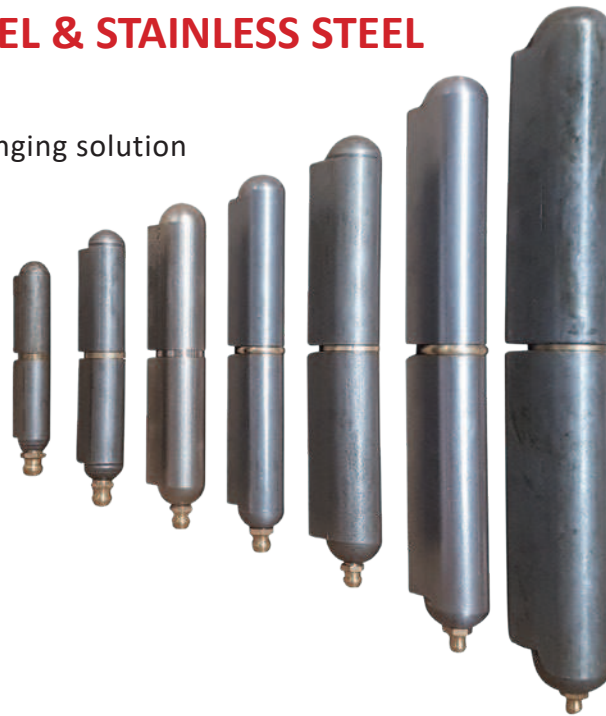


Code	Length (mm)	Closed Height (mm)	Predrilled Holes	Material	Open Angle (°)	Installation Gap (mm)	Mounting Surface (mm)
CF-2231/020	2000	28	None	PVC+Polyester	165	16	23
CF-2231/030	3000	28	None	PVC+Polyester	165	16	23

HINGES

WELD ON / LIFT-OFF WITH GREASE NIPPLE ALUMINIUM, STEEL & STAINLESS STEEL

- Very strong weld-on hinging solution
- With grease nipple



WOH Sizes: 60 80 100 120 150 200 260

Code	Body Material	Pin Material	A	D	P	L	C	R	Bag Qty
WOH-60-A	Aluminium	304 S/steel	60	10	6	30	12.5	2	10
WOH-80-A	Aluminium	304 S/steel	80	13	8	40	16	2	10
WOH-100-A	Aluminium	304 S/steel	100	16	10	50	20	2	10
WOH-120-A	Aluminium	304 S/steel	120	16	10	60	20	2	10
WOH-150-A	Aluminium	304 S/steel	150	20	13	75	25	2	10
WOH-200-A	Aluminium	304 S/steel	200	23	16	100	28.5	2	10
WOH-60-S01	Steel	Brass	60	10	6	30	12.5	2	10
WOH-80-S01	Steel	Brass	80	13	8	40	16	2	10
WOH-100-S01	Steel	Brass	100	16	10	50	20	2	10
WOH-120-S01	Steel	Brass	120	16	10	60	20	2	10
WOH-150-S01	Steel	Brass	150	20	13	75	25	2	10
WOH-200-S01	Steel	Brass	200	23	16	100	28.5	2	10
WOH-260-S01	Steel	Steel	260	28	19	134	37	2	10
WOH-60-SS	304 S/steel	304 S/steel	60	10	6	30	12.5	2	10
WOH-80-SS	304 S/steel	304 S/steel	80	13	8	40	16	2	10
WOH-100-SS	304 S/steel	304 S/steel	100	16	10	50	20	2	10
WOH-120-SS	304 S/steel	304 S/steel	120	16	10	60	20	2	10
WOH-150-SS	304 S/steel	304 S/steel	150	20	13	75	25	2	10
WOH-200-SS	304 S/steel	304 S/steel	200	23	16	100	28.5	2	10

Note: Specifications can change from time to time without notice.
Cut-outs & construction should only be done with the products onsite.

SELECTLOK
NEW ZEALAND LTD

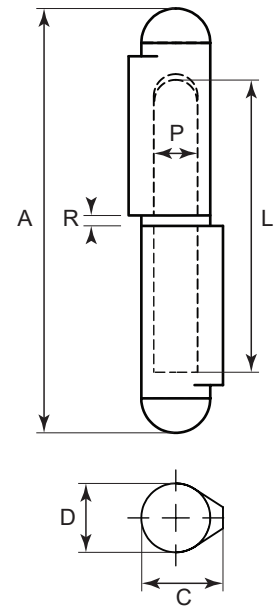
HINGES

WELD ON / LIFT-OFF WITHOUT GREASE NIPPLE ALUMINIUM & STEEL

- Very strong weld-on hinging solution
- Without grease nipple

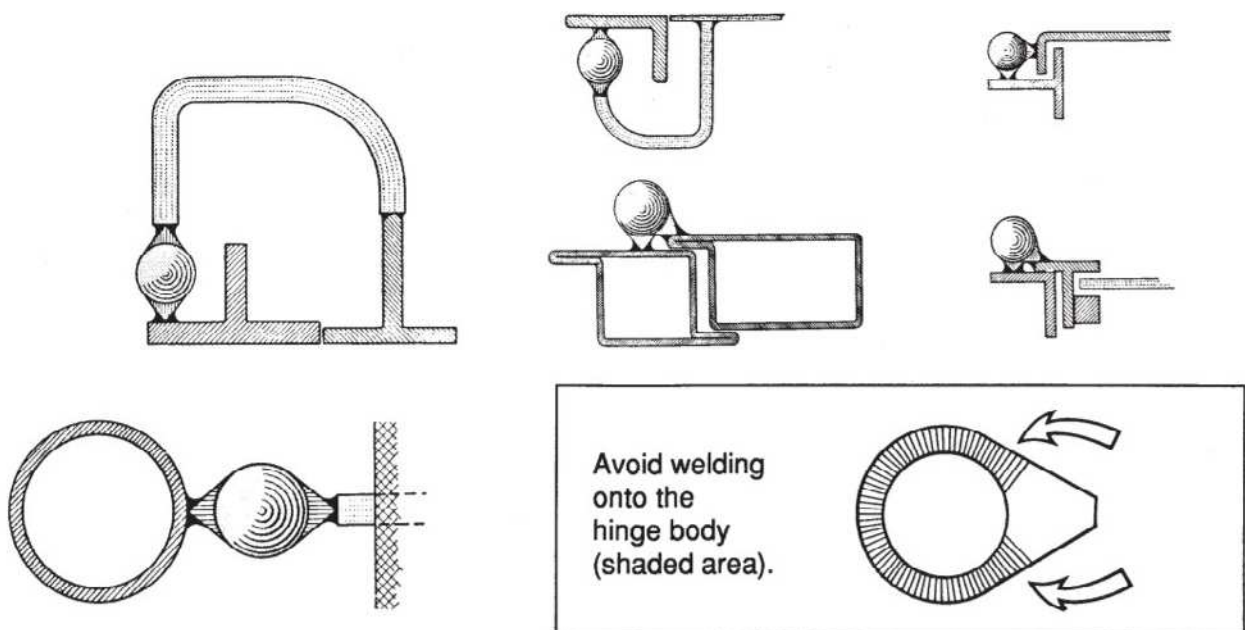


WOH-60 80 100 120



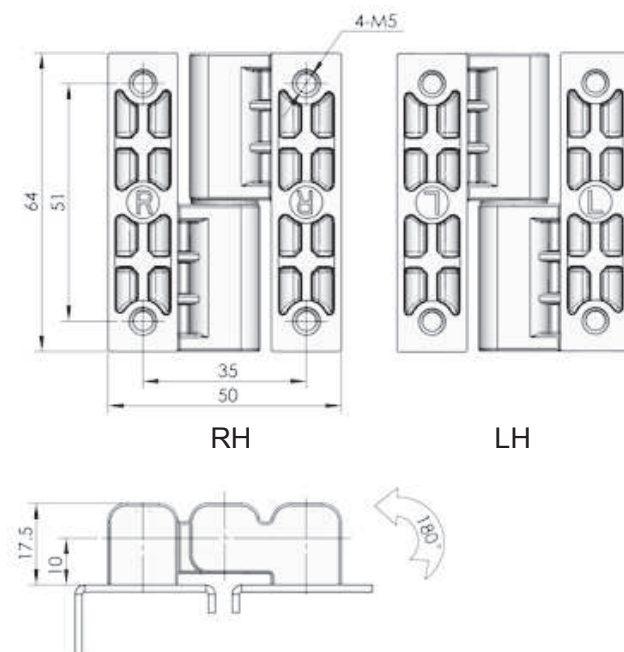
Code	Body Material	Pin Material	A	D	P	L	C	R	Bag Qty
WOH-60-A/NGN	Aluminium	304 S/steel	60	10	6	30	12.5	2	10
WOH-80-A/NGN	Aluminium	304 S/steel	80	13	8	40	16	2	10
WOH-100-A/NGN	Aluminium	304 S/steel	100	16	10	50	20	2	10
WOH-60-S	Steel	Steel	60	10	6	30	12.5	2	10
WOH-80-S	Steel	Steel	80	13	8	40	16	2	10
WOH-100-S	Steel	Steel	100	16	10	50	20	2	10
WOH-120-S	Steel	Steel	120	16	10	60	20	2	10

See below some welding configurations for different applications:



BUTT LIFT-OFF: 50MM HOLES ZINC

- Lift off
- Zinc body
- Stainless steel pin



CL203-3-RH-BLK

CL203-3-LH-BLK

Code	Left Right	Height (mm)	Width (mm)	Thick (mm)	Open Angle (°)	Fixing Method	Hole Centres (mm)
CL203-3-RH-BLK	Right	64	50 (25+25)	17.5	180	4xM5 Holes	51H x 35W (17.5+17.5)
CL203-3-LH-BLK	Left	64	50 (25+25)	17.5	180	4xM5Holes	51H x 35W (17.5+17.5)

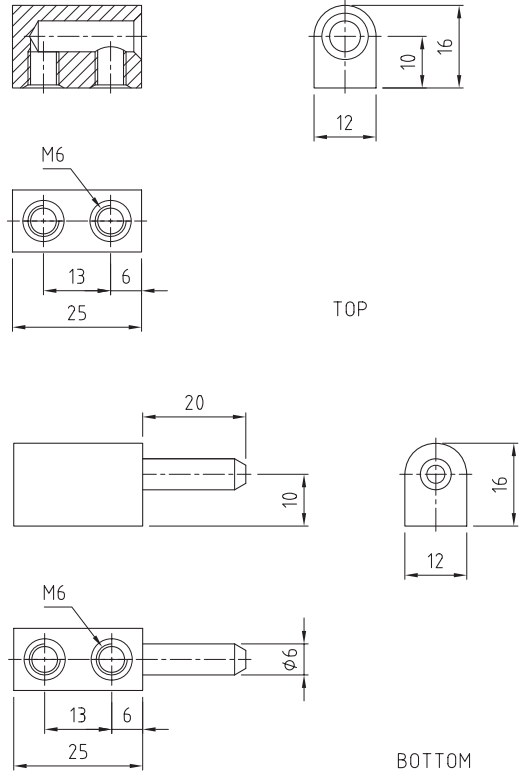
HINGES

BLOCK / PINTLE

LIFT-OFF

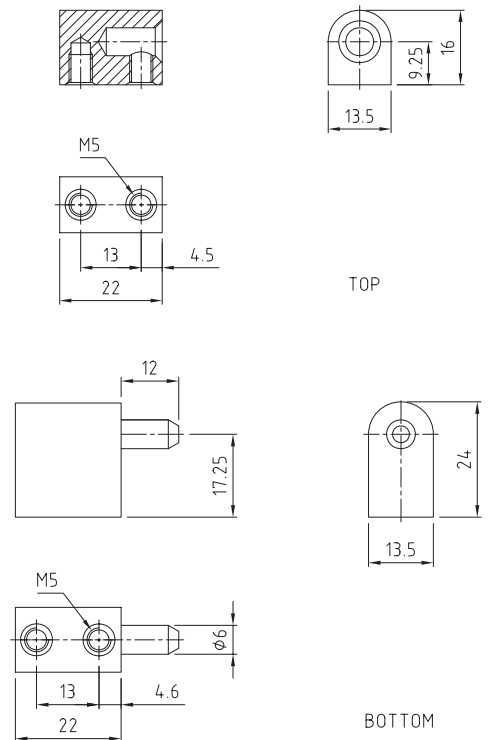
BRASS CHROME

- Lift off
- Brass Body, 304 Stainless steel pin
- High quality finish
- Interchangeable male & female components
- M6x8 Serrated hex screws available



Code	Material / Finish	Height (mm)	Width (mm)	Thickness (mm)	Pin Dia (mm)
HIB500NS-E	Brass / Chrome	50 (25+25)	12	Inline 16	6

- Lift off
- Brass Body, 304 Stainless steel pin
- High quality finish
- Interchangeable male & female components
- M6x8 Serrated hex screws available



Code	Material / Finish	Height (mm)	Width (mm)	Thickness (mm)	Pin Dia (mm)
HIB520NS-E	Brass / Chrome	44 (22+22)	13.5	Offset: 16/24	6

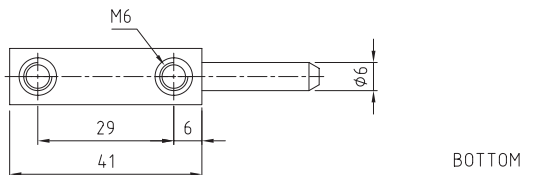
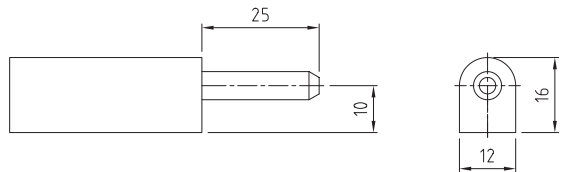
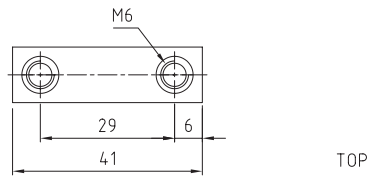
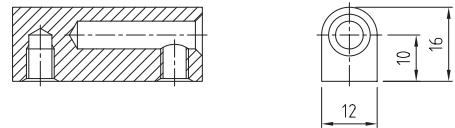
HINGES

BLOCK / PINTLE

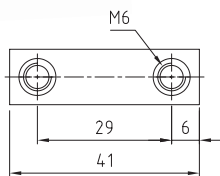
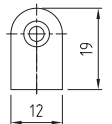
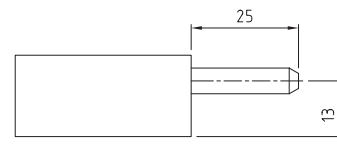
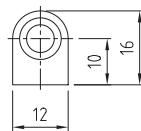
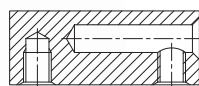
LIFT-OFF

BRASS CHROME, 316 STAINLESS STEEL

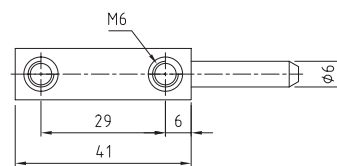
- Lift off
- Two material options with high quality finish:
 - Brass Body & 304 Stainless steel pin
 - 316 Stainless Steel
- Interchangeable male & female components
- M6x8 Serrated hex screws available



Code	Material / Finish	Height (mm)	Width (mm)	Thickness (mm)	Pin Dia (mm)
HIB650NS-E	Brass / Chrome	82 (41+41)	12	Inline: 16	6
HIB650SS-316NS	316 Stainless Steel	82 (41+41)	12	Inline: 16	6



TOP



BOTTOM

Code	Material / Finish	Height (mm)	Width (mm)	Thickness (mm)	Pin Dia (mm)
HIB820NS-E	Brass / Chrome	82 (41+41)	12	Offset: 16/19	6
HIB820SS-316NS	316 Stainless Steel	82 (41+41)	12	Offset: 16/19	6

Note: Specifications can change from time to time without notice.
Cut-outs & construction should only be done with the products onsite.

SELECTLOK
NEW ZEALAND LTD

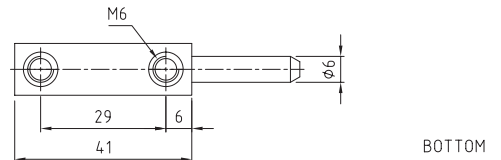
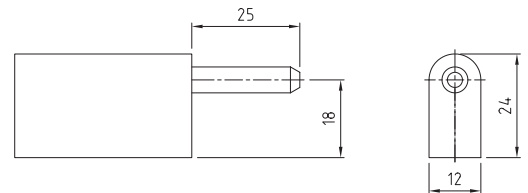
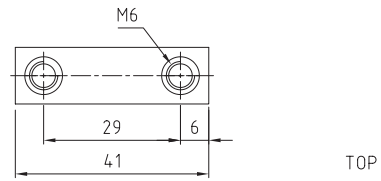
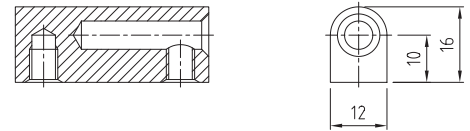
HINGES

BLOCK / PINTLE

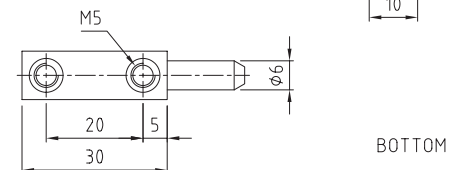
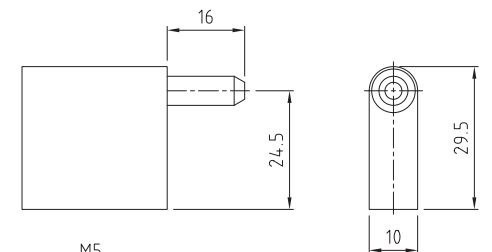
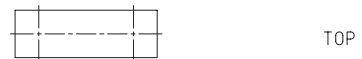
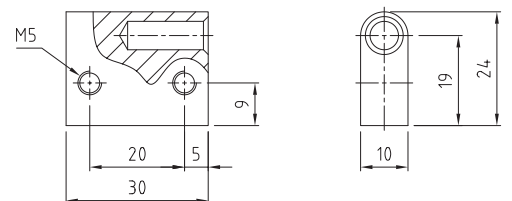
LIFT-OFF

BRASS CHROME

- Lift off
- Brass Body & 304 Stainless steel pin
- High quality finish
- Interchangeable male & female components
- M6x8 Serrated hex screws available



Code	Material / Finish	Height (mm)	Width (mm)	Thickness (mm)	Pin Dia (mm)
HIB880NS-E	Brass / Chrome	82 (41+41)	12	Offset: 16/24	6



Code	Material / Finish	Height (mm)	Width (mm)	Thickness (mm)	Pin Dia (mm)
HIB900NS-E	Brass / Chrome	60 (30+30)	12	Offset: 24/29.5	6

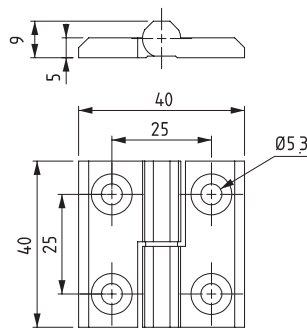
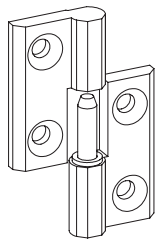
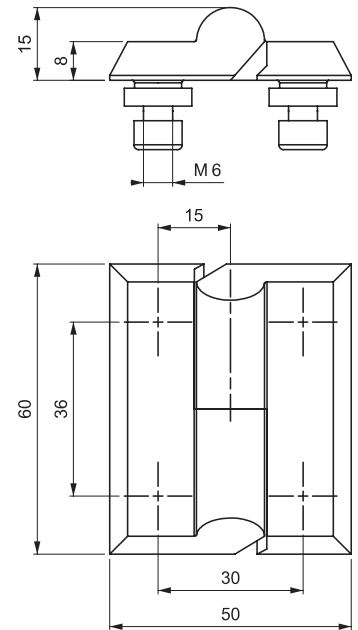
HINGES

BUTT LIFT-OFF: 40 & 50 & 60mm HOLES
316 STAINLESS STEEL

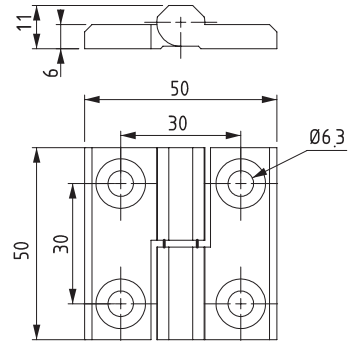
- Lift off
- 316 Stainless steel



M-3599-4-0-###



M-3299-4-0-###



M-3099-4-0-###

Code	Left	Right	Height (mm)	Width (mm)	Thick (mm)	Open Angle (°)	Fixing Method	Hole Centres (mm)
M-3599-4-0-001	Right		60	50 (25+25)	8	270	4xM6 Holes	36H x 30W (15+15)
M-3599-4-0-002	Left		60	50 (25+25)	8	270	4xM6 Holes	36H x 30W (15+15)
M-3299-4-0-001	Right		40	40 (20+20)	5	270	4xM5 Holes	25H x 25W (12.5+12.5)
M-3299-4-0-002	Left		40	40 (20+20)	5	270	4xM5Holes	25H x 25W (12.5+12.5)
M-3099-4-0-001	Right		50	50 (25+25)	6	270	4xM6 Holes	30H x 30W (15+15)
M-3099-4-0-002	Left		50	50 (25+25)	6	270	4xM6 Holes	30H x 30W (15+15)

Note: Specifications can change from time to time without notice.
 Cut-outs & construction should only be done with the products onsite.

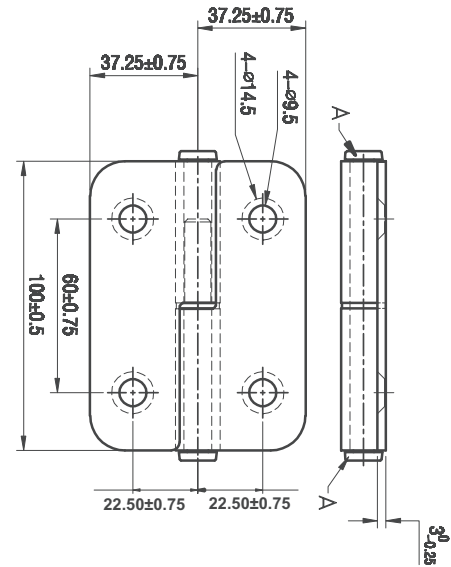
HINGES

BUTT LIFT-OFF: 100mm

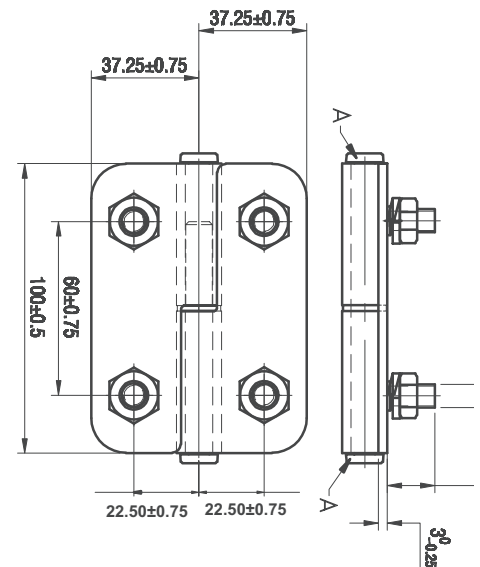
HOLES & STUDS

STAINLESS STEEL

- Lift off
- 304 Stainless steel
- Available with holes or with copper coated steel studs



HIB100X75#-SS



HIB100X75#-STUDS-SS

Code	Left <input type="checkbox"/> Right <input type="checkbox"/>	Height (mm)	Width (mm)	Thick (mm)	Open Angle (°)	Fixing Method	Hole Centres (mm)
HIB100X75R-SS	Right <input checked="" type="checkbox"/> Left <input type="checkbox"/>	100	75 (37+37)	3	270	4xM8Holes	60H x 45W
HIB100X75L-SS	Left <input checked="" type="checkbox"/> Right <input type="checkbox"/>	100	75 (37+37)	3	270	4xM8Holes	60H x 45W
HIB100X75R-STUD-SS	Right <input checked="" type="checkbox"/> Left <input type="checkbox"/>	100	75 (37+37)	3	270	4xM8 Studs	60H x 45W
HIB100X75L-STUD-SS	Left <input checked="" type="checkbox"/> Right <input type="checkbox"/>	100	75 (37+37)	3	270	4xM8 Studs	60H x 45W

HINGES

BUTT MARINE: 38 & 40mm

HOLES

MARINE - 316 STAINLESS STEEL

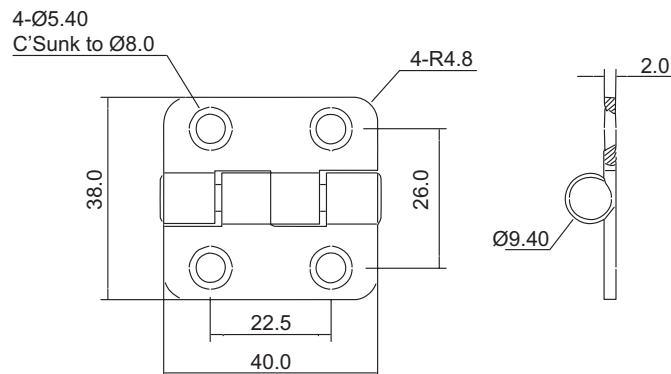
- 316 Stainless steel marine hinges
- Plastic hinge covers available



Code	Height (mm)	Width (mm)	Thick (mm)	Open Angle (°)	Material / Finish	Fixing Method	Hole Centres (mm)
S-N6-4E-422-24	38	38(19+19)	2	270	316 S/Steel	4xM4 Holes	20H x 26W (13+13)
S-N6-4E-424-24	38	58(39+19)	2	270	316 S/Steel	5xM4 Holes	Contact us
S-N6-4E-444-24	38	78(39+39)	2	270	316 S/Steel	6xM4 Holes	Contact us
S-N6-4E-426-24	38	78(59+19)	2	270	316 S/Steel	5xM4 Holes	Contact us
S-N6-4E-446-24	38	98(59+39)	2	270	316 S/Steel	6xM4 Holes	Contact us
S-N6-4E-466-24	38	118(59+59)	2	270	316 S/Steel	6xM4 Holes	Contact us



HIB40382



Code	Height (mm)	Width (mm)	Thick (mm)	Open Angle (°)	Material / Finish	Fixing Method	Hole Centres (mm)
HIB40382	40	38 (19+19)	2	270	316 S/Steel	4xM5 Holes	22.5H x 26W(13+13)

Note: Specifications can change from time to time without notice.
Cut-outs & construction should only be done with the products onsite.

SELECTLOK
NEW ZEALAND LTD

HINGES

FLUSH MARINE HINGE: 30mm HOLES

MARINE - 316 STAINLESS STEEL

- 316 Stainless steel lay flat marine hinge
- Double pivot hinge so can be mounted flush with surface of deck and the hatch can be opened 180°

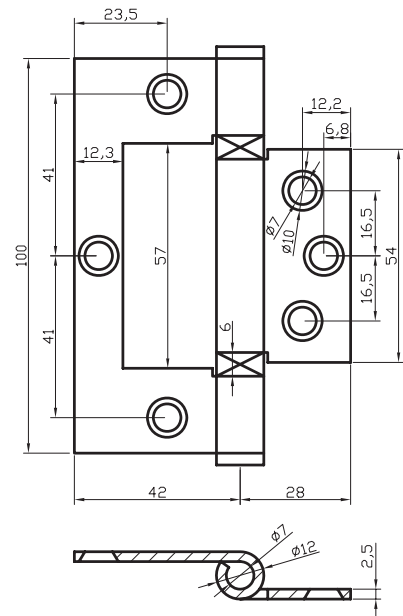


Code	Height (mm)	Width (mm)	Thick (mm)	Open Angle (°)	Material / Finish	Fixing
DX316-HIB-DH	30	80 (40+40)	3	180	316 S/Steel	6xM4 Holes

FAST FIX: 100mm HOLES

STAINLESS STEEL

- 316 Stainless steel leaves with 304 stainless steel pin
- Roller bearing for super smooth rotation (except HIB7651XX)
- Cost effective high quality hinge

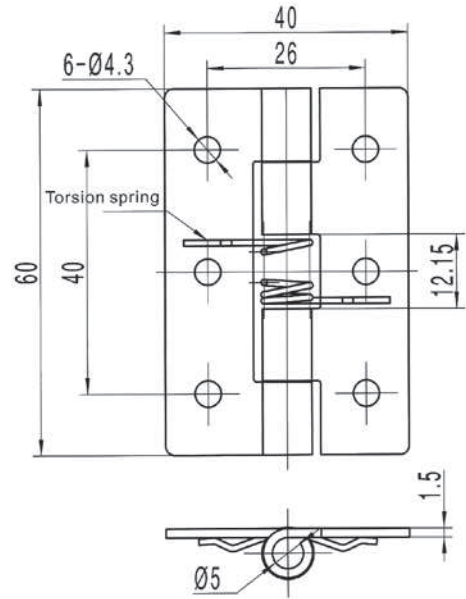


Code	Height (mm)	Width (mm)	Thick (mm)	Open Angle (°)	Material / Finish	Fixing Method	Roller Bearing
HIB100-316	100	42	2.5	270	316 + 304 S/Steel	6x10G Holes	Yes

HINGES

BUTT SPRING OPEN: 60mm HOLES STAINLESS STEEL

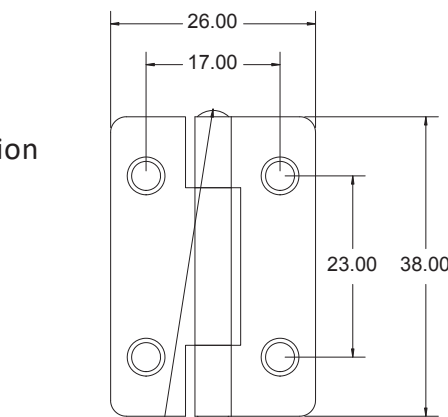
- Spring loaded to open door



Code	Height (mm)	Width (mm)	Thick (mm)	Open Angle (°)	Material / Finish	Fixing Method	Hole Centres (mm)
CL253-6	60	40	1.5	270	304 S/steel	6x8G Holes	See diagram

BUTT STANDARD: 38mm HOLES STEEL & STAINLESS STEEL

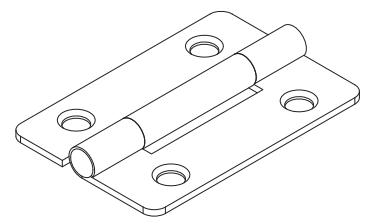
- Basic zinc plated steel hinging solution
- Cost effective hinge



Spun both ends
Pin Ø 2.40mm

HIB38261:
4x CSK Holes 4mm

HIB38261SS:
4x CSK Holes 3.6mm



Code	Height (mm)	Width (mm)	Thick (mm)	Open Angle (°)	Material / Finish	Fixing Method	Hole Centres (mm)
HIB38261	38	25.5	1	270	Steel	4x 3.6mm Holes	23H x 17W
HIB38261SS	38	26.5	1	270	304 S/Steel	4x 4mm Holes	23H x 17W

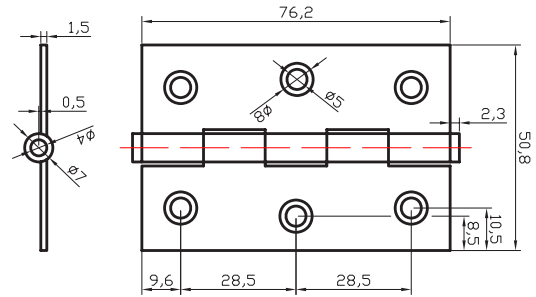
Note: Specifications can change from time to time without notice.
Cut-outs & construction should only be done with the products onsite.

SELECTLOK
NEW ZEALAND LTD

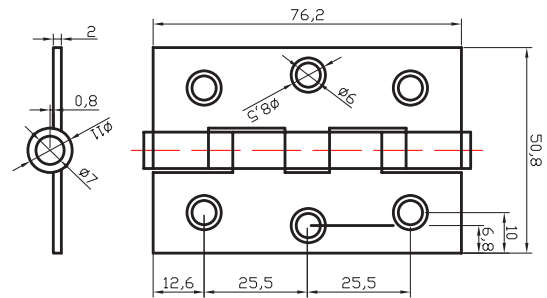
HINGES

BUTT STANDARD FIXED: 76 & 100mm HOLES STAINLESS STEEL

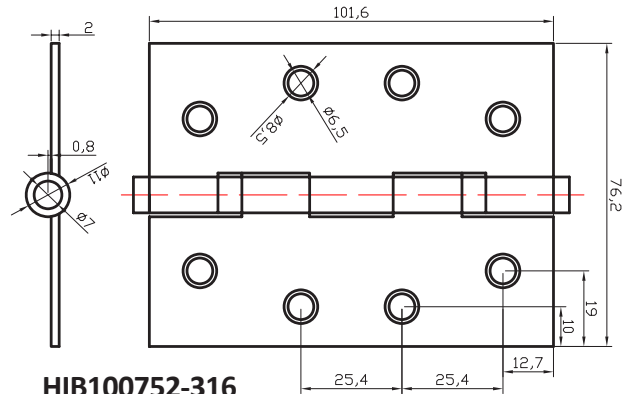
- 316 Stainless steel leaves with 304 stainless steel pin
- Roller bearing for super smooth rotation (except HIB765116-316)
- Cost effective high quality hinge



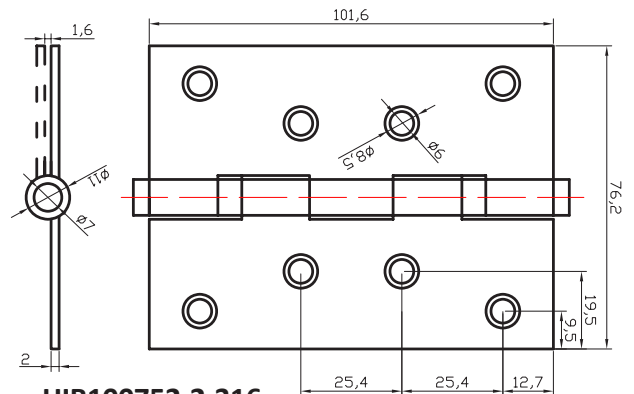
HIB765116-316



HIB76512-316



HIB100752-316



HIB100752-2-316



HIB765116-316



HIB76512-316



HIB100752-316



HIB100752-2-316

Code	Height (mm)	Width (mm)	Thick (mm)	Open Angle (°)	Material / Finish	Fixing Method	Roller Bearing
HIB765116-316	76	51	1.5	270	316 + 304 S/Steel	6x6G Holes	No
HIB76512-316	76	51	2	270	316 + 304 S/Steel	6x6G Holes	Yes
HIB100752-316	102	76	2	270	316 + 304 S/Steel	8x8G Holes	Yes
HIB100752-2-316	102	76	2	270	316 + 304 S/Steel	8x8G Holes	Yes

HINGES

BUTT STANDARD FIXED: 100mm & 152mm

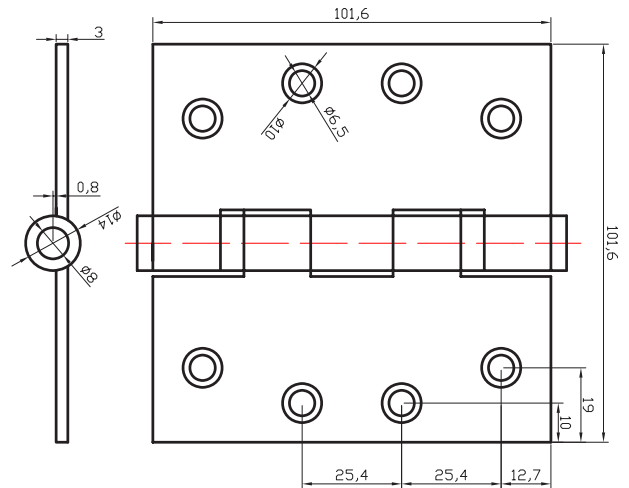
HOLES

STAINLESS STEEL

- 316 Stainless steel leaves with 304 stainless steel pin
- Roller bearing for super smooth rotation
- Cost effective high quality hinge



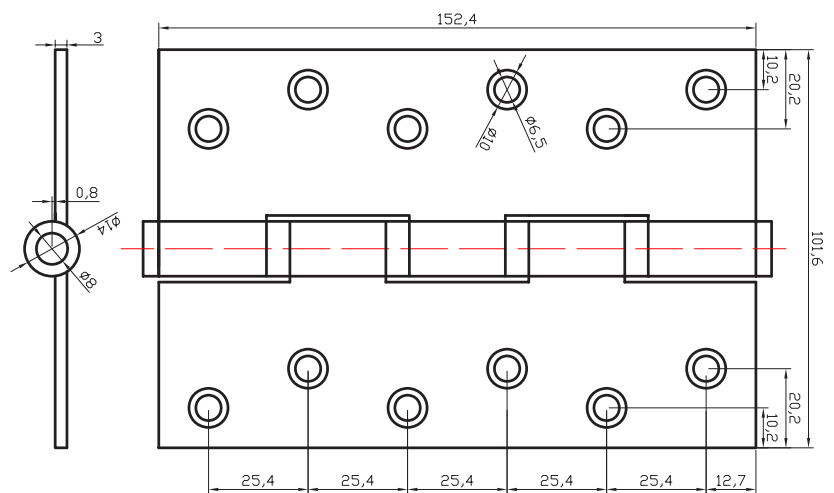
HIB100100-316



HIB100100-316



HIB1521023-316



HIB1521023-316

Code	Height (mm)	Width (mm)	Thick (mm)	Open Angle (°)	Material / Finish	Fixing Method	Roller Bearing
HIB100100-316	102	102	3	270	316 + 304 S/Steel	8x8G Holes	Yes
HIB1521023-316	152	102	3	270	316 + 304 S/Steel	12x10G Holes	Yes

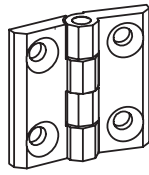
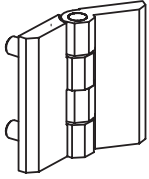
HINGES

BUTT FIXED: 40mm

HOLES & STUDS

ZINC & 316 STAINLESS STEEL

- Zinc die cast with stainless steel pin, or 316 stainless steel



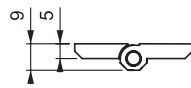
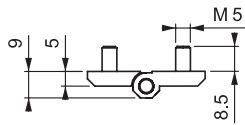
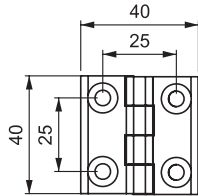
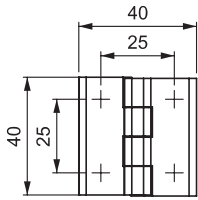
M-299-1-2-1



M-299-1-2-3



M-299-4-0-3



M-299-#-#-1

M-299-#-#-3

Code	Height (mm)	Width (mm)	Thick (mm)	Open Angle (°)	Material / Finish	Fixing Method	Hole Centres (mm)
M-299-1-2-1	40	40 (20+20)	5	270	Zinc / Black	4xM5 Studs	25H x 25W (12.5+12.5)
M-299-1-2-3	40	40 (20+20)	5	270	Zinc / Black	4xM5 Holes	25H x 25W (12.5+12.5)
M-299-4-0-3	40	40 (20+20)	5	270	316 S/Steel	4xM5 Holes	25H x 25W (12.5+12.5)

HINGES

BUTT FIXED: 50mm

HOLES & STUDS

ZINC & 316 STAINLESS STEEL

- Zinc die cast with stainless steel pin, or 316 stainless steel



M-099-1-2-1



M-099-1-2-4



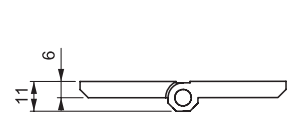
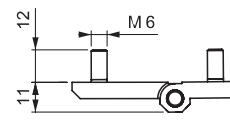
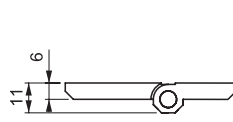
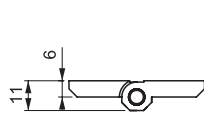
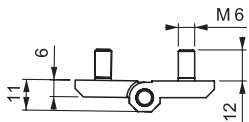
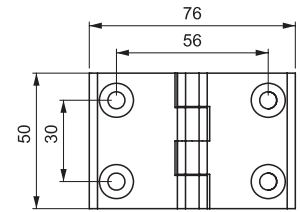
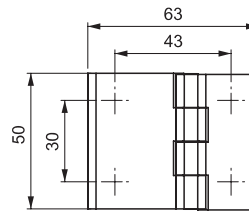
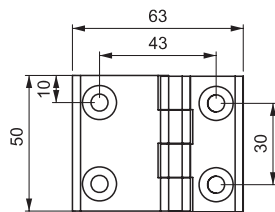
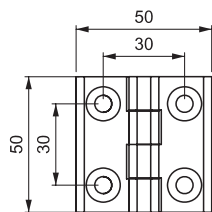
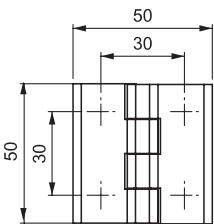
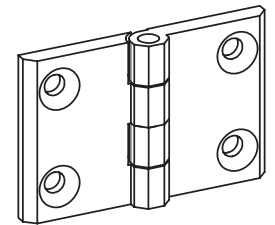
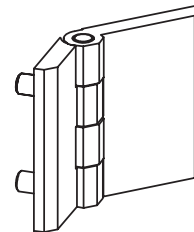
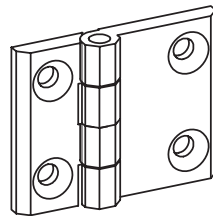
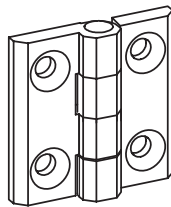
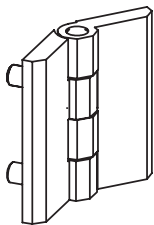
M-099-1-2-7



M-099-1-2-8



M-099-1-1-10



M-099-1-2-1

M-099-1-2-4

M-099-1-2-7

M-099-1-2-8

M-099-1-1-10

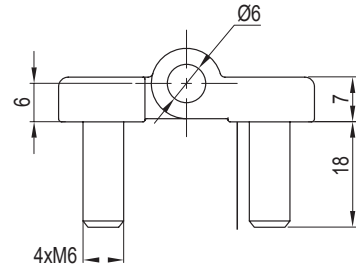
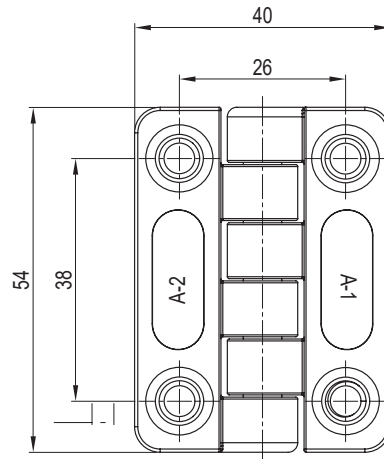
Code	Height (mm)	Width (mm)	Thick (mm)	Open Angle (°)	Material / Finish	Fixing Method	Hole Centres (mm)
M-099-1-2-1	50	50 (25+25)	6	270	Zinc / Black	4xM6 Studs	30H x 30W (15+15)
M-099-1-2-4	50	50 (25+25)	6	270	Zinc / Black	4xM6 Holes	30H x 30W (15+15)
M-099-1-2-7	50	63 (25+38)	6	270	Zinc / Black	4xM6 Holes	30H x 43W (28+15)
M-099-1-2-8	50	63 (25+38)	6	270	Zinc / Black	4xM6 Studs	30H x 43W (28+15)
M-099-1-1-10	50	76 (38+38)	6	270	Zinc / Chrome	4xM6 Holes	30H x 56W (28+28)
M-099-1-2-10	50	76 (38+38)	6	270	Zinc / Black	4xM6 Holes	30H x 56W (28+28)
M-099-4-0-4	50	50 (25+25)	6	270	316 S/Steel	4xM6 Holes	30H x 30W (15+15)
M-099-4-0-7	50	63 (25+38)	6	270	316 S/Steel	4xM6 Holes	30H x 43W (28+15)

Note: Specifications can change from time to time without notice.
Cut-outs & construction should only be done with the products onsite.

HINGES

BUTT FIXED: 54mm
STUDS
ZINC

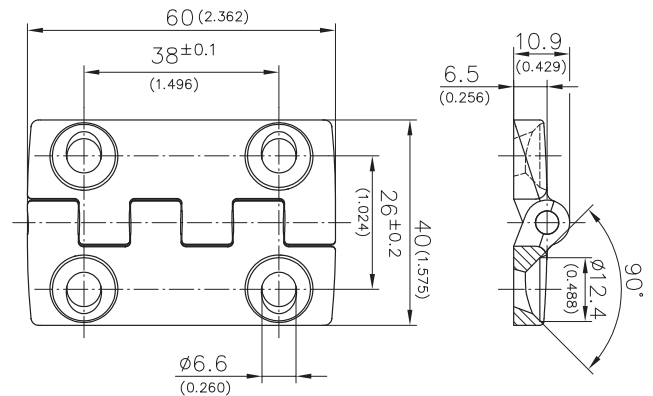
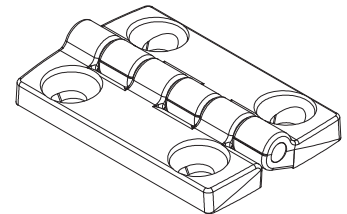
- Zinc die cast with stainless steel pin



Code	Height (mm)	Width (mm)	Thick (mm)	Open Angle (°)	Material / Finish	Fixing Method	Hole Centres (mm)
CL209-1	54	40 (20+20)	6	165	Zinc / Black	4xM6 Studs	38H x 26W (18+18)

BUTT FIXED: 60mm
HOLES
PLASTIC

- Polyamide hinge
- Flame resistant & saltwater tested - corrosion resistant
- Tight tolerance in knuckles ensures proper alignment
- Captive pin - protected against loosening
- Elegant design, rounded corners
- Light-weight



Code	Height (mm)	Width (mm)	Thick (mm)	Open Angle (°)	Material / Finish	Fixing Method	Hole Centres (mm)
218-9220	60	40	6.5	225	Polyamide / Black	4xM6 Holes	38H x 26W (13+13)

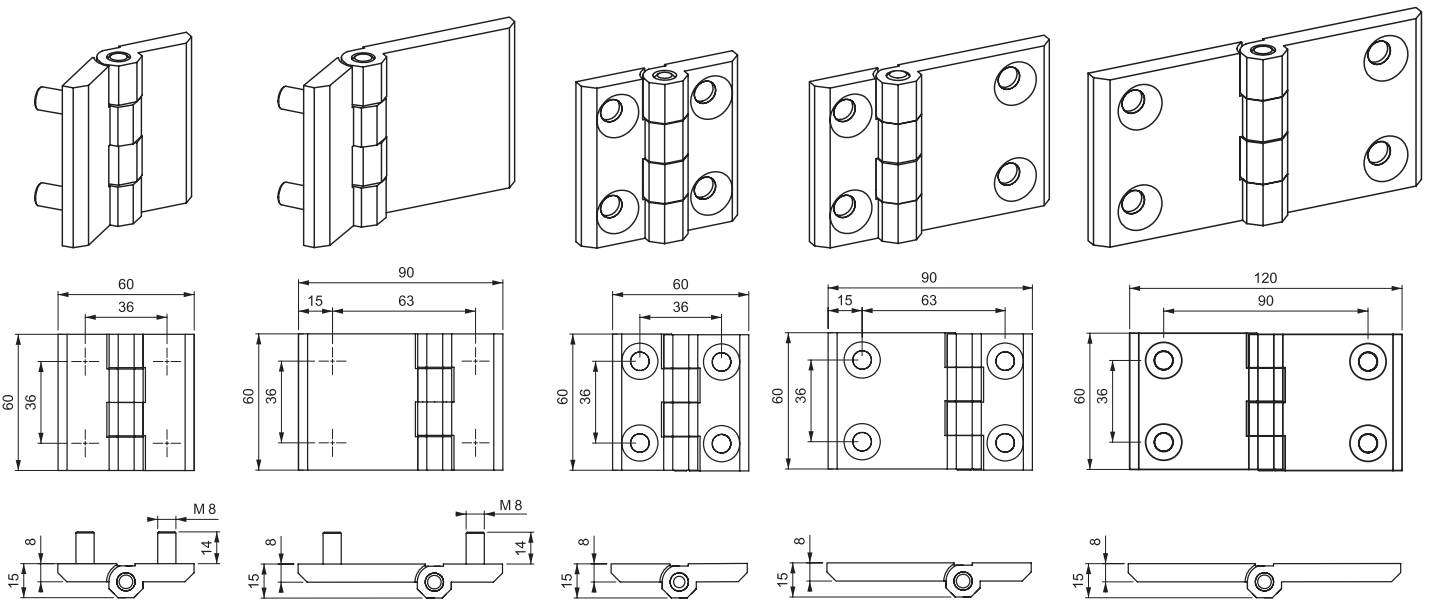
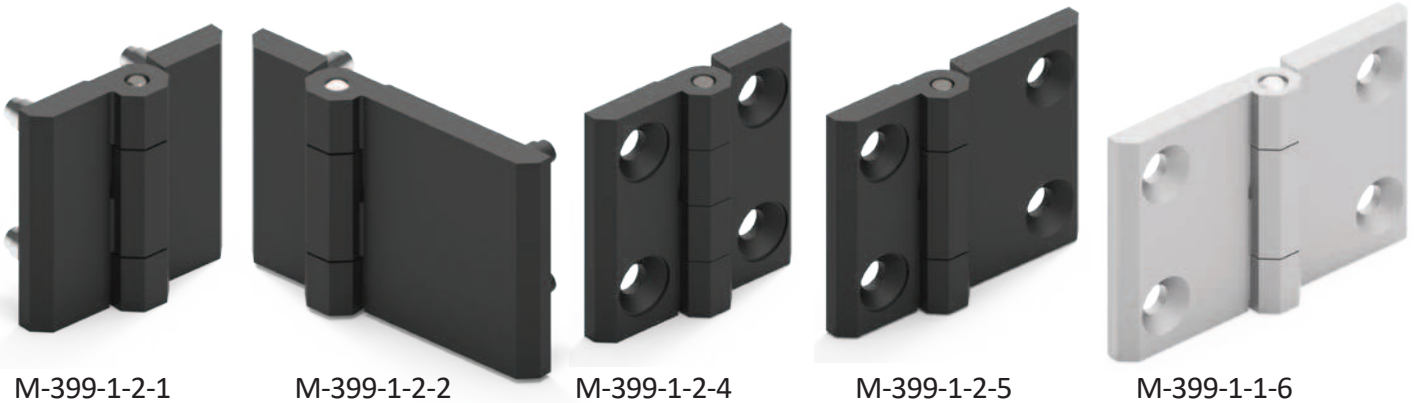
HINGES

BUTT FIXED: 60mm

HOLES & STUDS

ZINC

- Zinc die cast with stainless steel pin



M-399-##-1 M-399-##-2 M-399-##-4 M-399-##-5 M-399-##-6

Code	Height (mm)	Width (mm)	Thick (mm)	Open Angle (°)	Material / Finish	Fixing Method	Hole Centres (mm)
M-399-1-2-1	60	60 (30+30)	8	270	Zinc / Black	4xM8 Studs	36H x 36W (18+18)
M-399-1-2-2	60	90 (30+60)	8	270	Zinc / Black	4xM8 Studs	36H x 63W (18+45)
M-399-1-2-4	60	60 (30+30)	8	270	Zinc / Black	4xM8 Holes	36H x 36W (18+18)
M-399-1-1-5	60	90 (30+60)	8	270	Zinc / Chrome	4xM8 Holes	36H x 63W (18+45)
M-399-1-2-5	60	90 (30+60)	8	270	Zinc / Black	4xM8 Holes	36H x 63W (18+45)
M-399-1-1-6	60	120 (60+60)	8	270	Zinc / Chrome	4xM8 Holes	36H x 90W (45+45)

Note: Specifications can change from time to time without notice.
Cut-outs & construction should only be done with the products onsite.

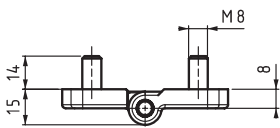
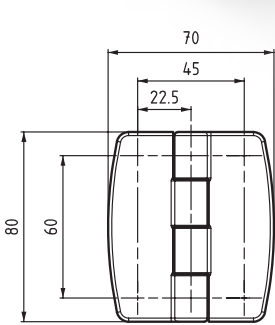
HINGES

BUTT FIXED: 80mm

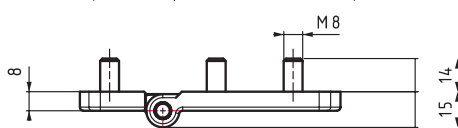
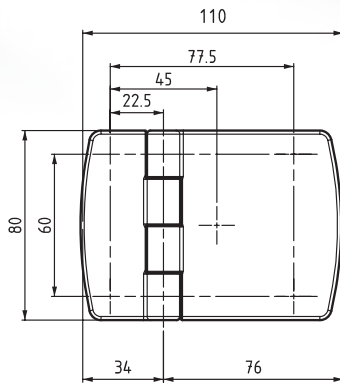
STUDS

ZINC

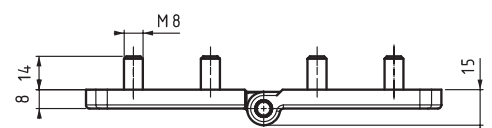
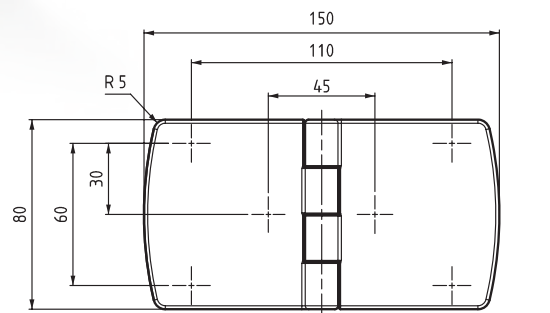
- Zinc die cast with stainless steel pin



M-1399-1-#-1



M-1399-1-#-2



M-1399-1-#-3

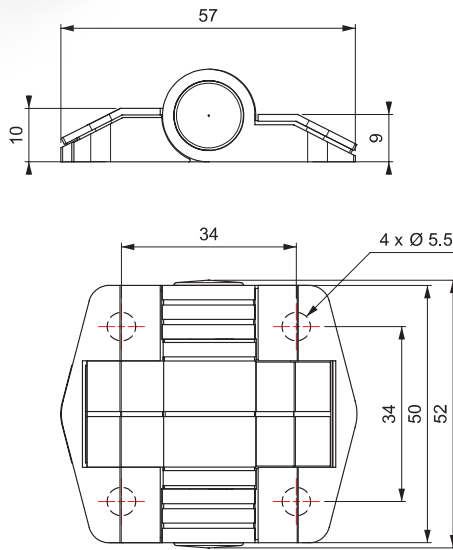
Code	Height (mm)	Width (mm)	Thick (mm)	Open Angle (°)	Material / Finish	Fixing Method	Hole Centres (mm)
M-1399-1-2-1	80	70 (35+35)	8	270	Zinc / Black	4xM8 Studs	60H x 45W (22.5+22.5)
M-1399-1-2-2	80	110 (34+76)	8	270	Zinc / Black	5xM8 Studs	See diagram
M-1399-1-2-3	80	150 (75+75)	8	270	Zinc / Black	6xM8 Studs	See diagram

HINGES

BUTT TORQUE HOLES

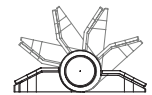
PLASTIC



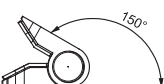
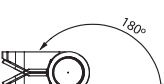
- Positioning hinge - positive click into position
- Polyamide Black
- Plastic pin



Code
Suffix:

Rotation:



-22	80°	
-33	115°	
-43	150°	
-10	180°	

Code	Height (mm)	Width (mm)	Thick (mm)	Open Angle (°)	Force (Nm)	Fixing Method	Hole Centres (mm)
All models:	52	58 (29+29)	10			4xM5 Holes	34H x 34W (17+17)
M-2599-2-0-22				80	1.1		
M-2599-2-0-33				115	1.7		
M-2599-2-0-43				150	1.7		
M-2599-2-0-10				180	0 (Free swinging)		

Note: Specifications can change from time to time without notice.
Cut-outs & construction should only be done with the products onsite.

SELECTLOK
NEW ZEALAND LTD

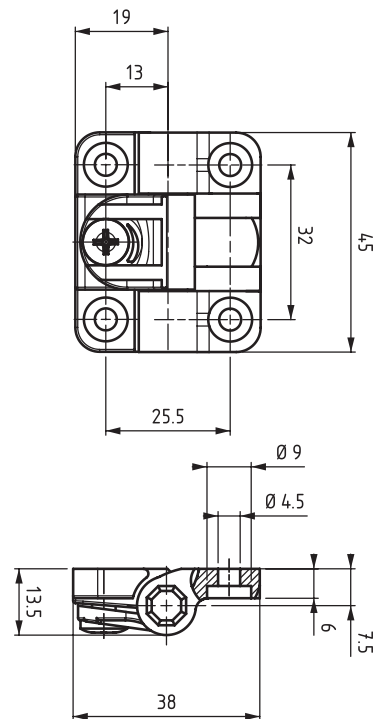
HINGES

BUTT TORQUE

HOLES

PLASTIC

- Adjustable torque hinge
- Polyamide black
- Plastic pin



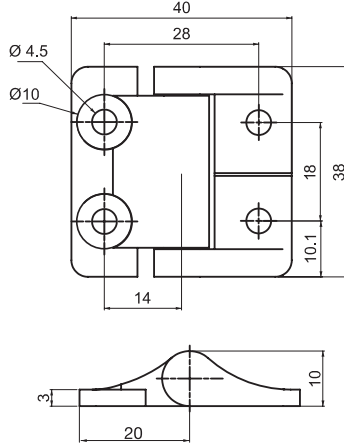
Code	Height (mm)	Width (mm)	Thick (mm)	Open Angle (°)	Force (Nm)	Fixing Method	Hole Centres (mm)
M-2399-2-0	45	38	13.5	115	≤0.8 (Adjustable)		32H x 26W (13+13)

HINGES

BUTT TORQUE HOLES

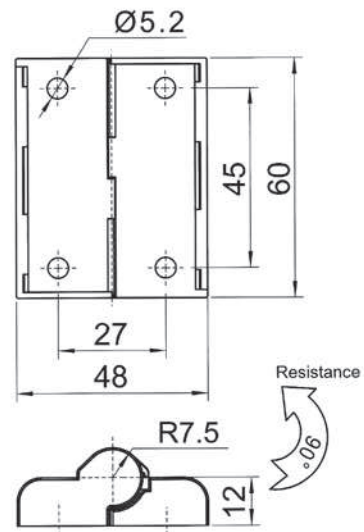
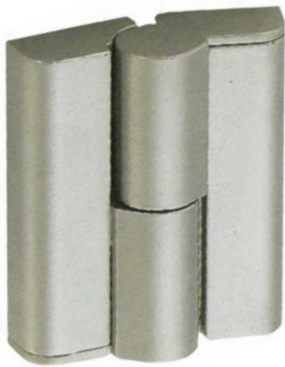
ZINC

- Zinc die cast
- Steel pin



Code	Height (mm)	Width (mm)	Thick (mm)	Open Angle (°)	Force (Nm)	Fixing Method	Hole Centres (mm)
M-2099-1-2	51	40	4.5	80	2.3		34H x 28W (17+17)

- Zinc die cast
- Stainless steel pin
- With covers



Code	Height (mm)	Width (mm)	Thick (mm)	Open Angle (°)	Fixing Method	Hole Centres (mm)
CL299-1-Z	60	48	12	180	Holes	45H x 27W (13.5+13.5)

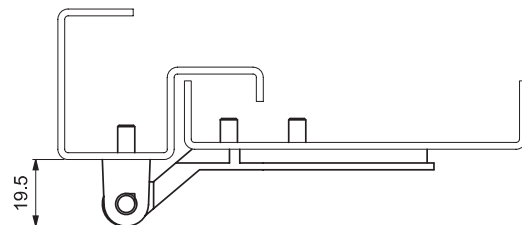
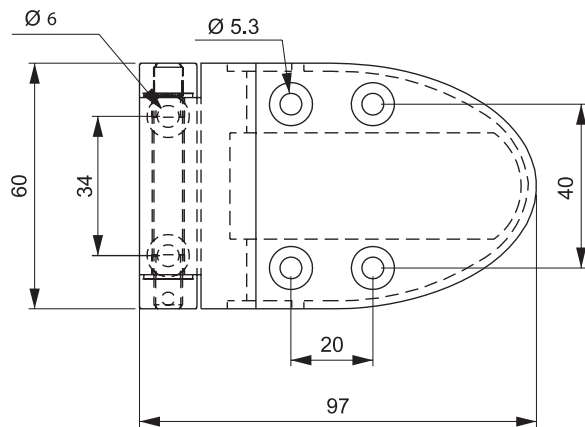
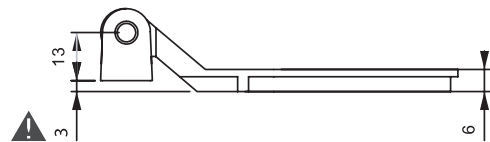
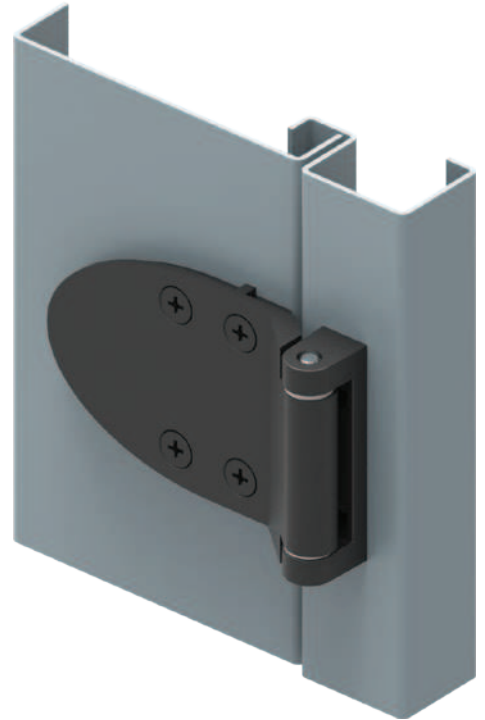
HINGES

OFFSET PIN

HVAC STEPPED

ZINC

- Zinc die cast with stainless steel pin
- Polyamide cover



Code	Height (mm)	Width (mm)	Thick (mm)	Open Angle (°)	Material / Finish	Fixing Method	Hole Centres (mm)
M-500	60	97	6	180	Zinc / Black	2xM6 + 4xM5 Holes	See diagram

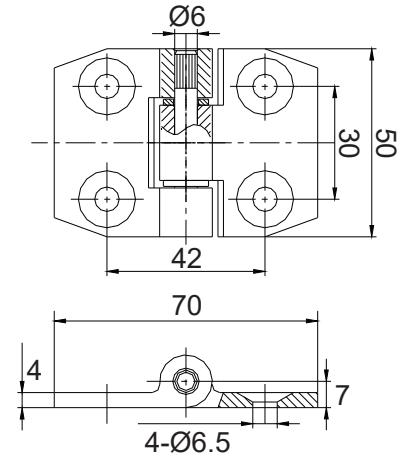
HINGES

OFFSET PIN

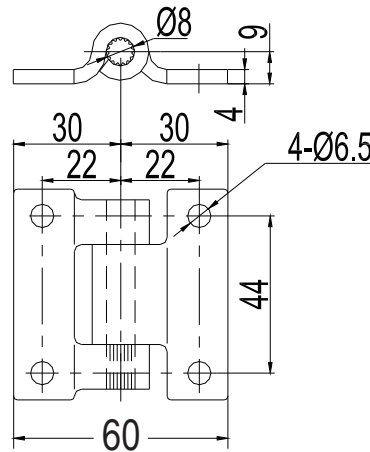
HOLES

GALVANISED & STAINLESS STEEL

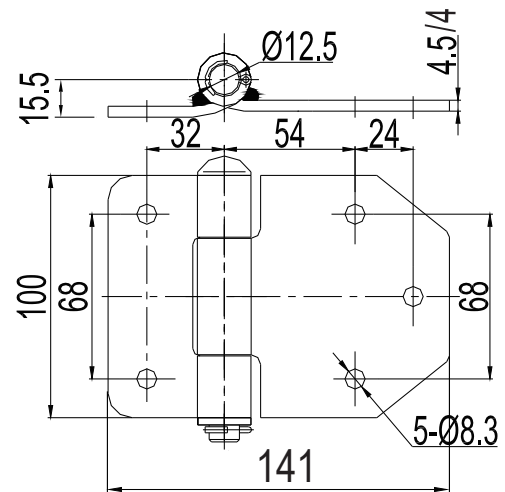
- Robust screw on hinges
- Suit side doors, tool boxes, tail gates



113090
Steel, galvanised



113080-S
304 stainless steel



113070-S
304 stainless steel

Code	Height (mm)	Width (mm)	Thick (mm)	Open Angle (°)	Material / Finish	Fixing Method	Hole Centres (mm)
113090	50	70 (35+35)	4	180	Steel/Galv	4xCSK M6 Holes	30H x 42W (21+21)
113080-S	59	60 (30+30)	4	180	304 S/Steel	4xM6 Holes	44H x 44W (22+22)
113070-S	100	141 (46+95)	3.6	180	304 S/Steel	5xM8 Holes	See diagram

Note: Specifications can change from time to time without notice.
Cut-outs & construction should only be done with the products onsite.

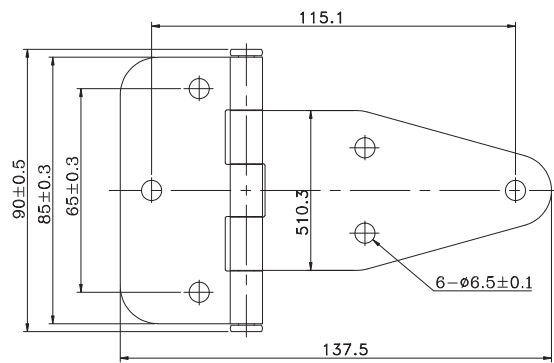
HINGES

STRAP T-TYPE

HOLES

STAINLESS STEEL

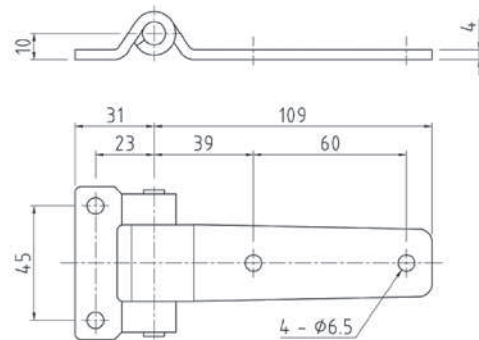
- Polished stainless steel
- Suit side doors, tool boxes



HIB90138-S

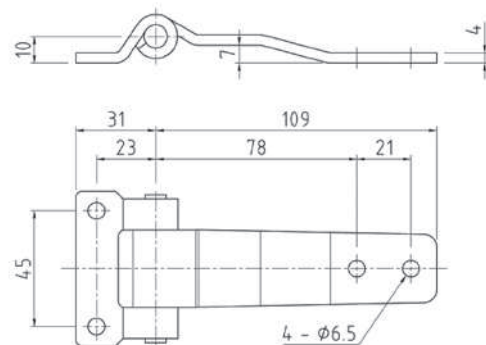


113040-S



113050-S

- Stepped leaf so the hinge fits over 183020/183125 truck door seal



Code	Height (mm)	Width (mm)	Thick (mm)	Open Angle (°)	Material / Finish	Fixing Method	Hole Centres (mm)
HIB90138-S	90	138	2	180	304 S/Steel	6xM6 Holes	See diagram
113040-S	60	150	4	180	304 S/Steel	4xM6 Holes	See diagram
113050-S	60	150	4	180	304 S/Steel	4xM6 Holes	See diagram

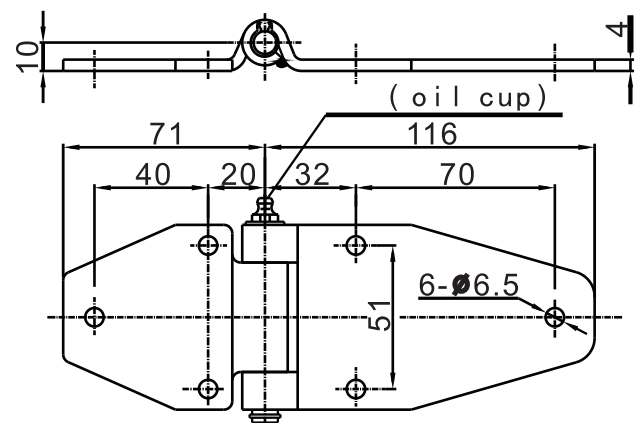
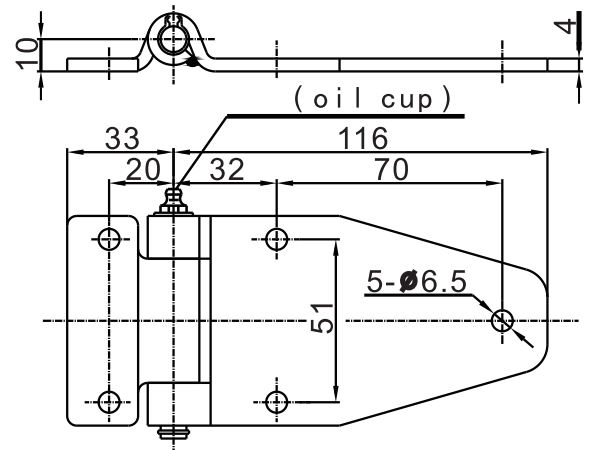
HINGES

STRAP

HOLES

STEEL & STAINLESS STEEL

- Suit side doors
- Steel / Zinc or polished 304 stainless steel
- With grease nipple



Code	Height (mm)	Width (mm)	Thick (mm)	Open Angle (°)	Material / Finish	Fixing Method	Hole Centres (mm)
030200	77	149 (33+116)	4	180	Steel / Zinc	5xM6 Holes	See diagram
030200-S	77	149 (33+116)	4	180	304 S/Steel	5xM6 Holes	See diagram
030300	77	187 (71+116)	4	180	Steel / Zinc	6xM6 Holes	See diagram
030300-S	77	187 (71+116)	4	180	304 S/Steel	6xM6 Holes	See diagram

Note: Specifications can change from time to time without notice.
Cut-outs & construction should only be done with the products onsite.

SELECTLOK
NEW ZEALAND LTD

HINGES

TRUCK / CONTAINER

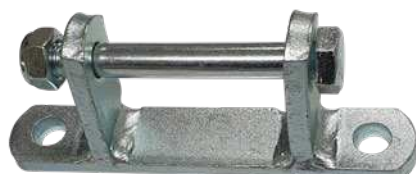
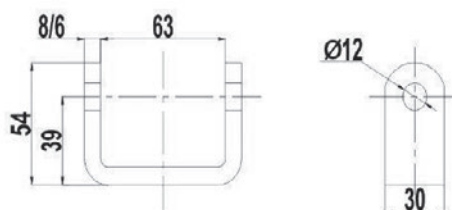
BRACKETS

STEEL & STAINLESS STEEL

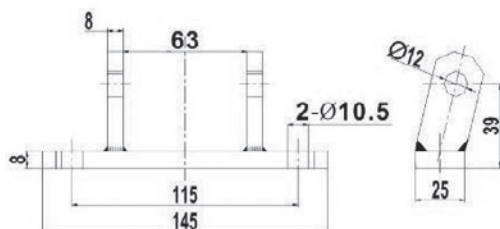
- Steel or stainless steel
- Weld-on or Bolt-on options
- M12 Offset pin to suit container hinges with step to clear rubber door seal



112001
112001-S



112002
112002-S



Code	Height (mm)	Width (mm)	Thick (mm)	Material / Finish	Fixing Method	Hole Centres (mm)
112001	60	30	8	Steel / Zinc	Weld on	
112001-S	60	30	8	304 S/Steel	Weld on	
112002	145	25	8	Steel / Zinc	2xM10 Holes	See diagram
112002-S	145	25	8	304 S/Steel	2xM10 Holes	See diagram

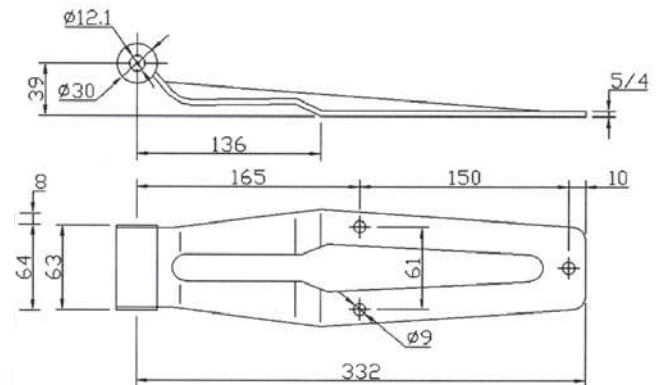
HINGES

TRUCK / CONTAINER

LARGE

STEEL & STAINLESS STEEL

- Steel or stainless steel
- M12 offset pin and step in leaf to clear rubber door seal
- Requires mounting bracket: Weld-on or Bolt-on (sold separately)



Showing **111011** Container Hinge + **112001** Weld-on Bracket

Code	Height (mm)	Width (mm)	Thick (mm)	Open Angle (°)	Material / Finish	Fixing Method	Hole Centres (mm)
111011	90	332	5	180	Steel / Zinc	3xM8 Holes	See diagram
111011-S	90	332	4	180	304 S/Steel	3xM8 Holes	See diagram

Choose mounting bracket to suit (sold separately) - see page 31:



112001
112001-S



112002
112002-S

HINGES

TRUCK / CONTAINER

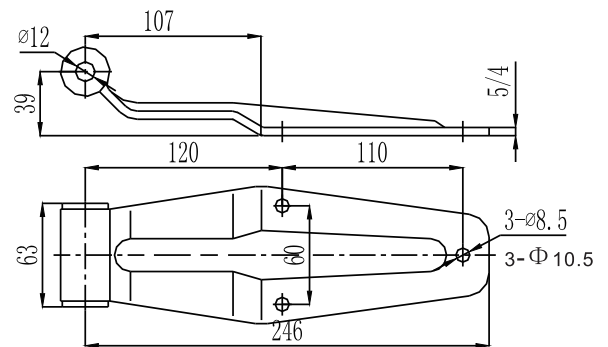
MEDIUM

STEEL & STAINLESS STEEL

- Steel or stainless steel
- M12 offset pin and step in leaf to clear rubber door seal
- Requires mounting bracket: Weld-on or Bolt-on (sold separately)



111021



Code	Height (mm)	Width (mm)	Thick (mm)	Open Angle (°)	Material / Finish	Fixing Method	Hole Centres (mm)
111021	84	246	5	180	Steel / Zinc	3xM8 Holes	See diagram
111021-S	84	246	4	180	304 S/Steel	3xM8 Holes	See diagram

Choose mounting bracket to suit (sold separately) - see page 31:



112001
112001-S



112002
112002-S

HINGES

TRUCK / CONTAINER

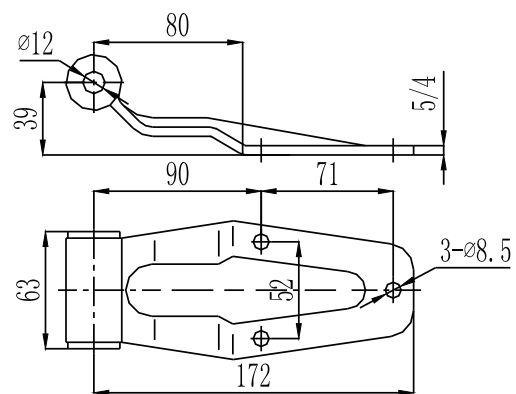
SMALL

STEEL & STAINLESS STEEL

- Steel or stainless steel
- M12 offset pin and step in leaf to clear rubber door seal
- Requires mounting bracket: Weld-on or Bolt-on (sold separately)



111031



Code	Height (mm)	Width (mm)	Thick (mm)	Open Angle (°)	Material / Finish	Fixing Method	Hole Centres (mm)
111031	75	172	5	180	Steel / Zinc	3xM8 Holes	See diagram
111031-S	75	172	4	180	304 S/Steel	3xM8 Holes	See diagram

Choose mounting bracket to suit (sold separately) - see page 31:



112001
112001-S



112002
112002-S

HINGES

TRUCK / CONTAINER

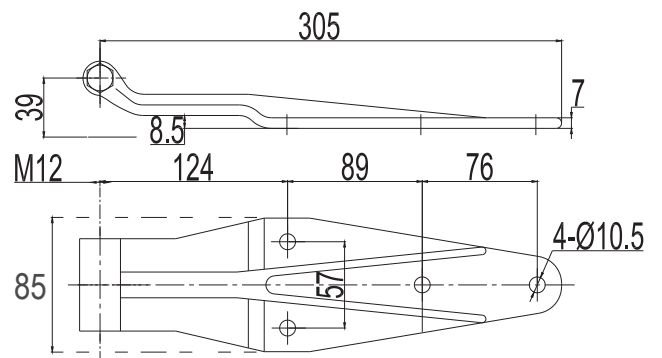
LARGE

STEEL & STAINLESS STEEL

- Die cast Steel zinc plated
- M12 offset pin and step in leaf to clear rubber door seal
- Requires mounting bracket: Weld-on or Bolt-on (sold separately)



111215



Code	Height (mm)	Width (mm)	Thick (mm)	Open Angle (°)	Material / Finish	Fixing Method	Hole Centres (mm)
111215	55	305	7	180	Steel / Zinc	4xM10 Holes	See diagram

Choose mounting bracket to suit (sold separately) - see page 31:



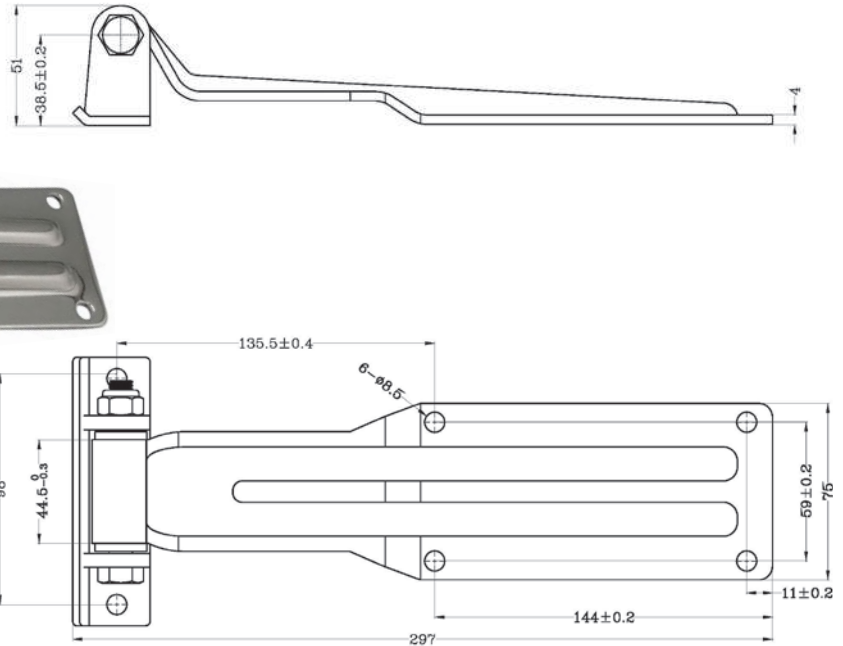
112001



112002

HINGES

TRUCK / CONTAINER LARGE WITH BOLT-ON BRACKET STEEL & STAINLESS STEEL



01177 (Replaces **031400**)

Steel / Zinc. Includes bolt-on bracket

01177-S

Stainless Steel. Includes bolt-on bracket

Code	Height (mm)	Width (mm)	Thick (mm)	Open Angle (°)	Material / Finish	Fixing Method
01177	115	297	4	180	Steel / Zinc	6xM8 Holes
01177-S	115	297	4	180	304 S/Steel	6xM8 Holes

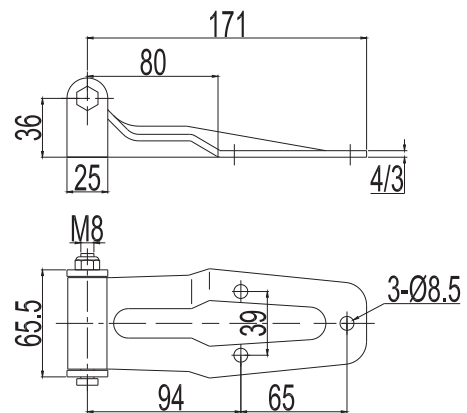
TRUCK / CONTAINER SMALL WITH WELD-ON BRACKET STEEL & STAINLESS STEEL



111041

111041-S

Includes weld-on bracket



Code	Height (mm)	Width (mm)	Thick (mm)	Open Angle (°)	Material / Finish	Fixing Method
111041	66	170	4	180	Steel / Zinc	Weld + 3xM8 Holes
111041-S	66	170	3	180	304 S/Steel	Weld + 3xM8 Holes

Note: Specifications can change from time to time without notice.
Cut-outs & construction should only be done with the products onsite.

SELECTLOK
NEW ZEALAND LTD

HINGES

CONCEALED LIFT-OFF SPRING LOADED STEEL

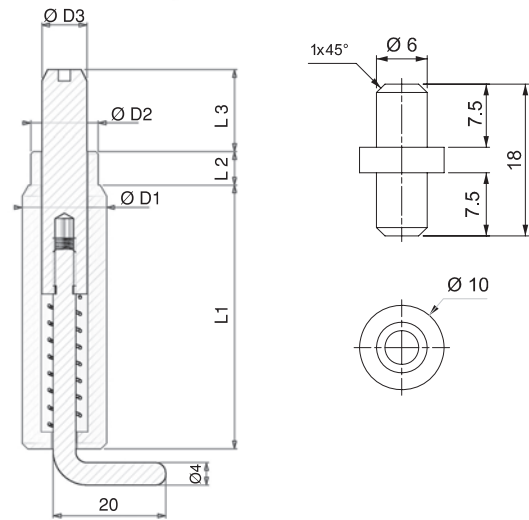
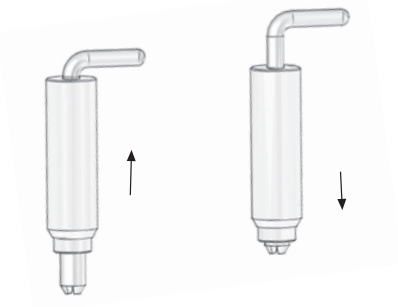
- For internally mounted doors
- Spring loaded pin for easy door removal
- Copper plated body for easy welding
- Either use 2pcs spring hinge (top and bottom), or, use fixed pin for bottom



Spring hinge top and bottom



Spring hinge top and fixed pin bottom

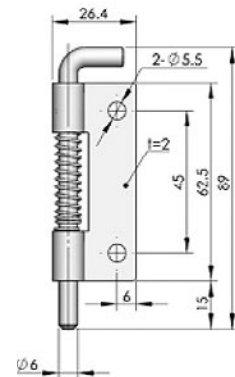
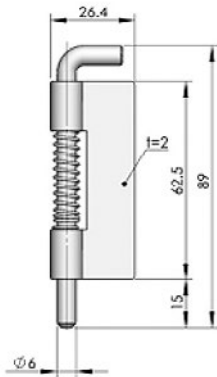
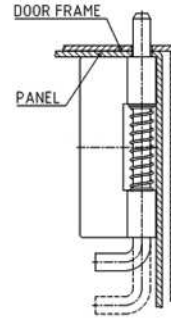


Code	Door Return Cavity (mm)	D1 Ø (mm)	D2 Ø (mm)	D3 Ø (mm)	L1 Ø (mm)	L2 Ø (mm)	L3 Ø (mm)	Open Angle (°)	Material / Finish	Fixing Method
M-189-10	10	10	8.5	6	38	3.5	10	110	Steel / Copper	Weld
M-189-15	15	15	12	9	47	6	14.5	110	Steel / Copper	Weld
M-32003192								360	Steel / Zinc	Hole

HINGES

CONCEALED LIFT-OFF SPRING LOADED STEEL

- Zinc plated steel
- Weld on or screw on



CL225-1-#

- Weld on

CL225-1A-#

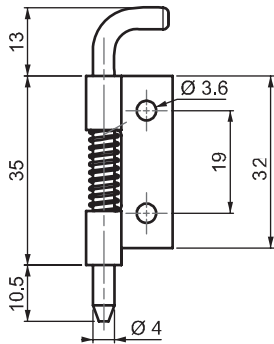
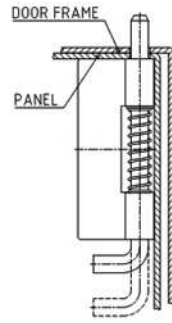
- Mounting holes

Code	Left Right	Height (mm)	Open Angle (°)	Material / Finish	Fixing Method
CL225-1-Y	Left	89	135	Zinc plated steel	Weld
CL225-1-Z	Right	89	135	Zinc plated steel	Weld
CL225-1A-Y	Left	89	135	Zinc plated steel	Holes or Weld
CL225-1A-Z	Right	89	135	Zinc plated steel	Holes or Weld

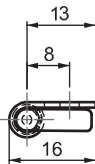
HINGES

CONCEALED LIFT-OFF SPRING LOADED STEEL & STAINLESS STEEL

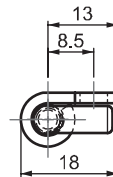
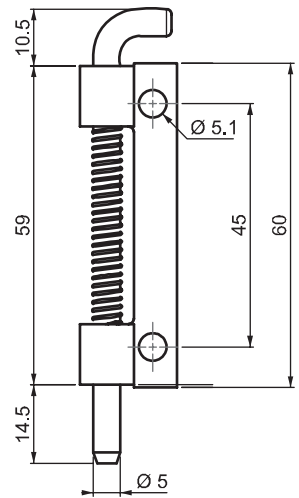
- Zinc plated steel, or 304 stainless steel
- Weld on or screw on



M-289-#-#-1



M-289-#-#-2



Code	Height (mm)	Open Angle (°)	Material / Finish	Fixing Method
M-289-6-3-1	58.5	135	Zinc plated steel	Holes or Weld
M-289-6-3-2	84	135	Zinc plated steel	Holes or Weld
M-289-4-0-1	58.5	135	304 S/steel	Holes or Weld
M-289-4-0-2	84	135	304 S/steel	Holes or Weld

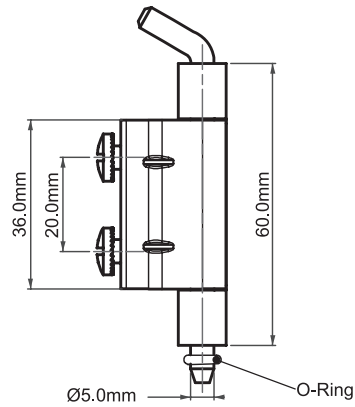
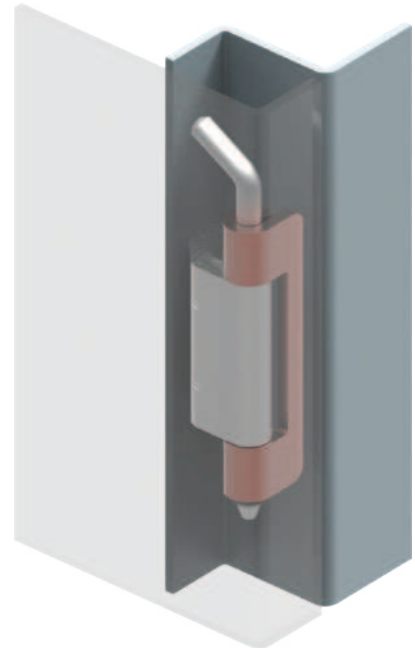
HINGES

**CONCEALED: 18mm
STEEL & STAINLESS STEEL**



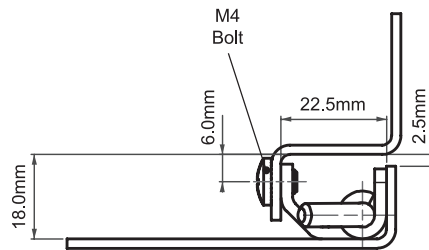
M-695-6-3-1

- Zinc plated steel
- Copper coated weld



M-695-4-0-1

- 304 Stainless steel
- 303 Stainless steel pin



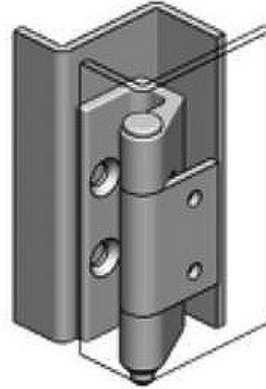
M-695-#-#-1

Fits door with
18mm hinge cavity

Code	Door Return Cavity (mm)	Height (mm)	Thick (mm)	Open Angle (°)	Material / Finish	Fixing Method	Hole Centres (mm)
M-695-6-3-1	18	60	2	120	Steel / Zinc	2xM4 + Weld	20H
M-695-4-0-1	18	60	2	120	S/Steel	2xM4 + Weld	20H

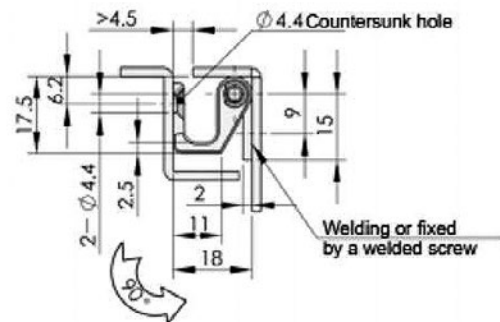
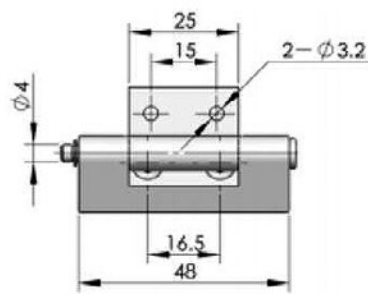
HINGES

CONCEALED: 18mm STEEL



CL237

- Zinc plated steel



Code	Door Return Cavity (mm)	Height (mm)	Thick (mm)	Open Angle (°)	Material / Finish	Fixing Method	Hole Centres (mm)
CL237	18	48	2	90	Steel / Zinc	2xM4 or Weld	See diagram

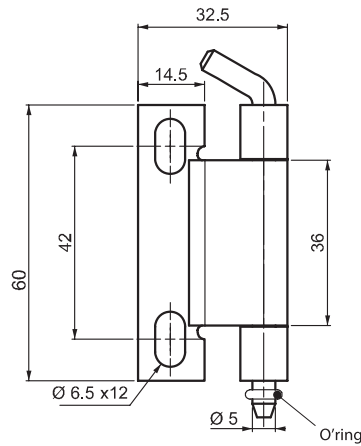
HINGES

**CONCEALED: 20mm
STEEL & STAINLESS STEEL**



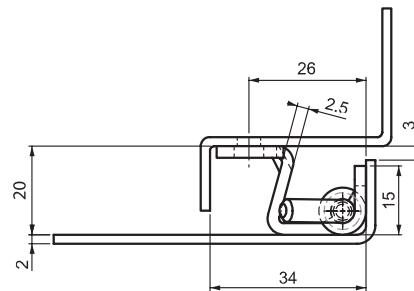
M-295-6-3-1

- Zinc plated steel
- Copper coated weld



M-295-4-0-1

- 304 Stainless steel
- 303 Stainless steel pin



M-295-#-#-1

Fits door with
20mm hinge cavity

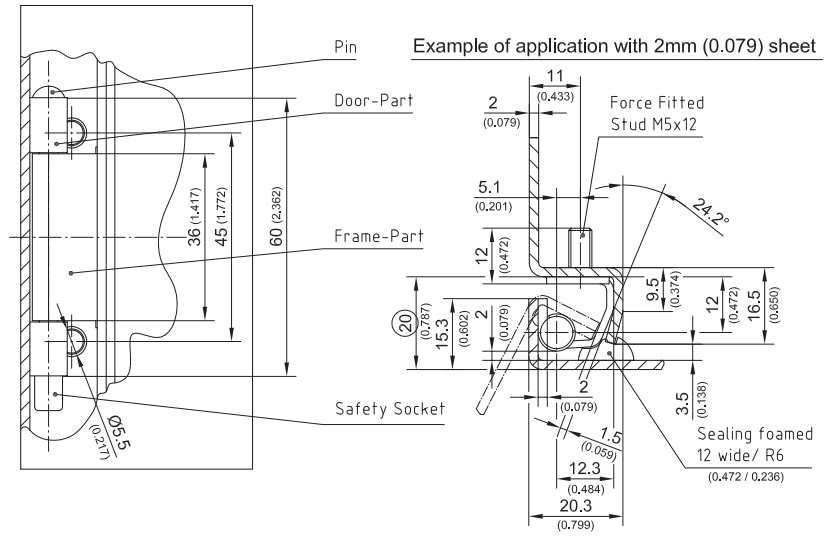
Code	Door Return Cavity (mm)	Height (mm)	Thick (mm)	Open Angle (°)	Material / Finish	Fixing Method	Hole Centres (mm)
M-295-6-3-1	20	60	2.5	120	Steel / Zinc	2xM6 + Weld	42H
M-295-4-0-1	20	60	2.5	120	S/Steel	2xM6 + Weld	42H

HINGES

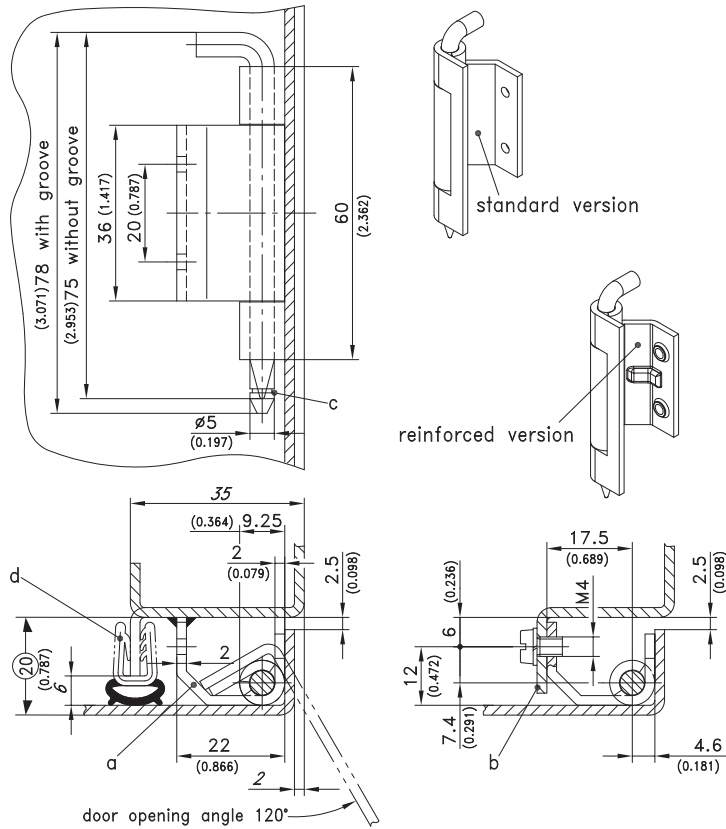
CONCEALED: 20mm STEEL



216-9032



216-9001



Code	Door Return Cavity (mm)	Height (mm)	Thick (mm)	Open Angle (°)	Material / Finish	Fixing Method	Hole Centres (mm)
216-9032	20	60	2.5	120	Steel / Zinc	2xM5 + Weld	45H
216-9001	20	60	2.5	120	Steel / Zinc	2xM4 + Weld	20H

HINGES

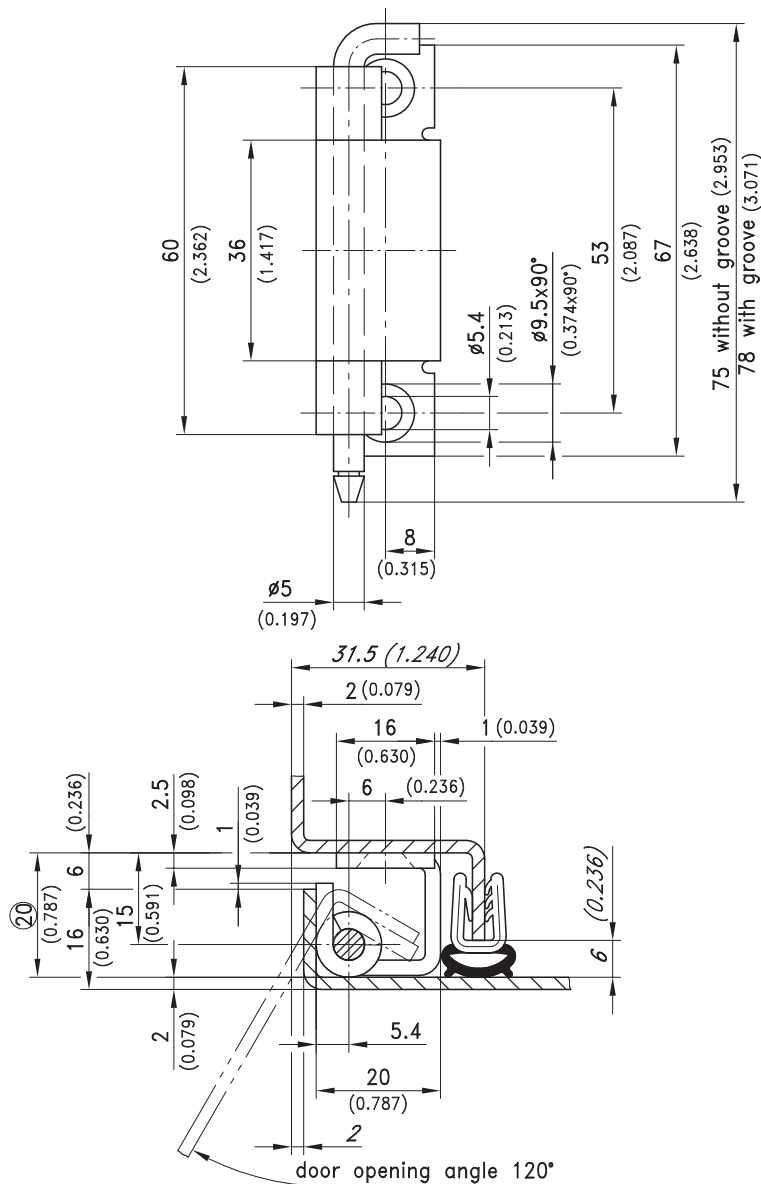
CONCEALED: 20mm
STEEL & STAINLESS STEEL



216-9022 Zinc plated steel
With grooved pin

216-9115 304 S/Steel
Without grooved pin

216-9116 304 S/Steel
With grooved pin



Code	Door Return Cavity (mm)	Height (mm)	Thick (mm)	Open Angle (°)	Material / Finish	Fixing Method	Hole Centres (mm)
216-9022	20	60	2.5	120	Steel / Zinc	2xM5 + Weld	53
216-9115	20	60	2.5	120	304 S/Steel	2xM5 + Weld	53
216-9116	20	60	2.5	120	304 S/Steel	2xM5 + Weld	53

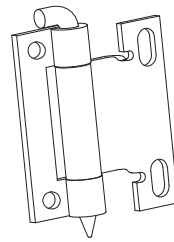
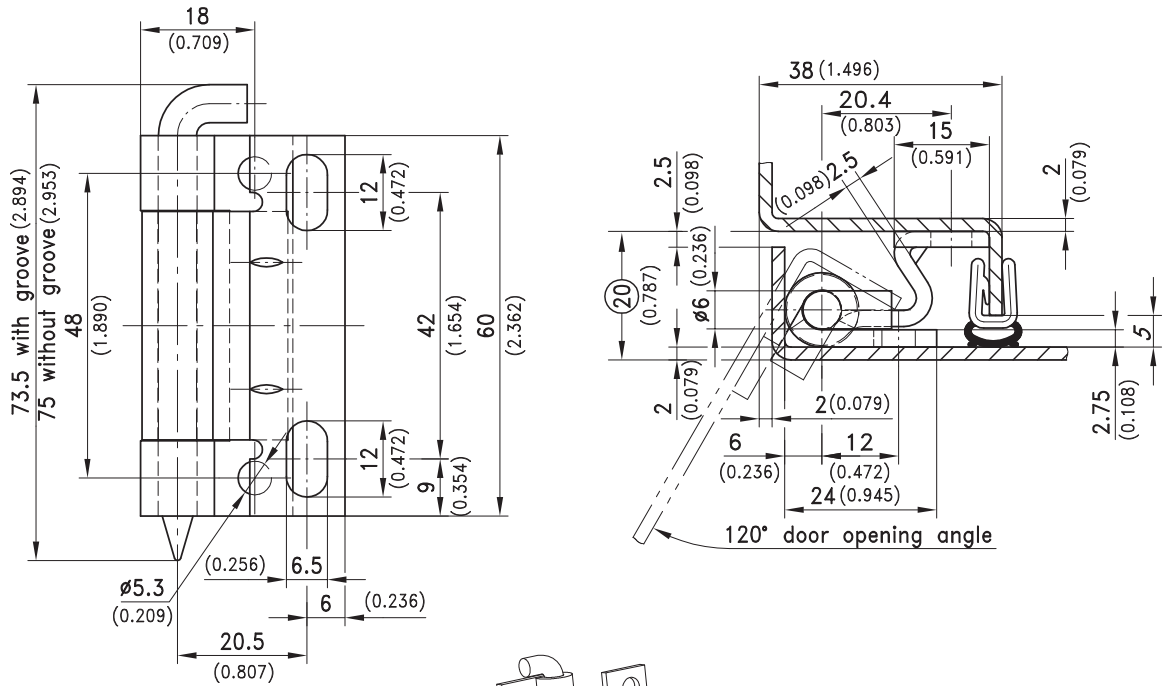
Note: Specifications can change from time to time without notice.
Cut-outs & construction should only be done with the products onsite.

SELECTLOK
NEW ZEALAND LTD

HINGES

CONCEALED: 20mm

STAINLESS STEEL



216-9103 304 S/Steel

Code	Door Return Cavity (mm)	Height (mm)	Thick (mm)	Open Angle (°)	Material / Finish	Fixing Method	Hole Centres (mm)
216-9103	20	60	2.5	120	304 S/Steel	4xM5 Screws	48 + 42

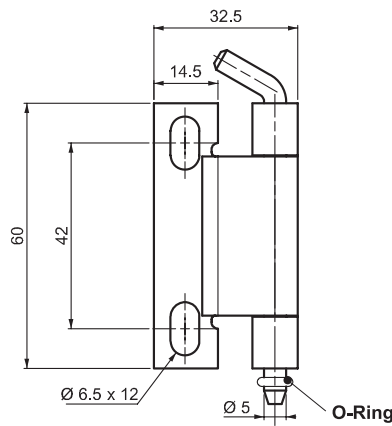
HINGES

CONCEALED: 24mm
STEEL & STAINLESS STEEL



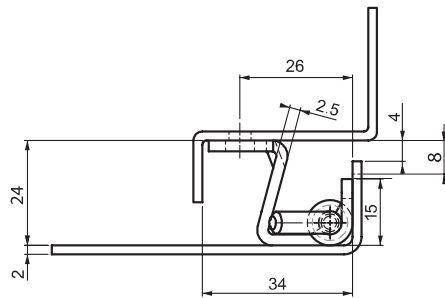
M-295-6-3-2

- Zinc plated steel
- Copper coated weld



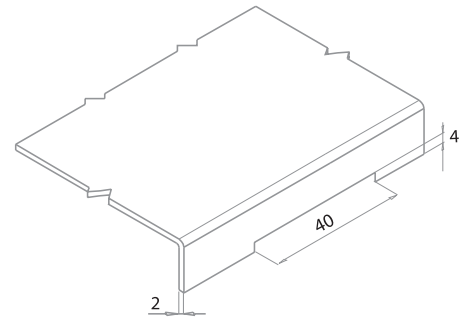
M-295-4-0-2

- 304 Stainless steel
- 303 Stainless steel pin



M-295-#-#-2

Fits door with
24mm hinge cavity



M-295-#-#-2

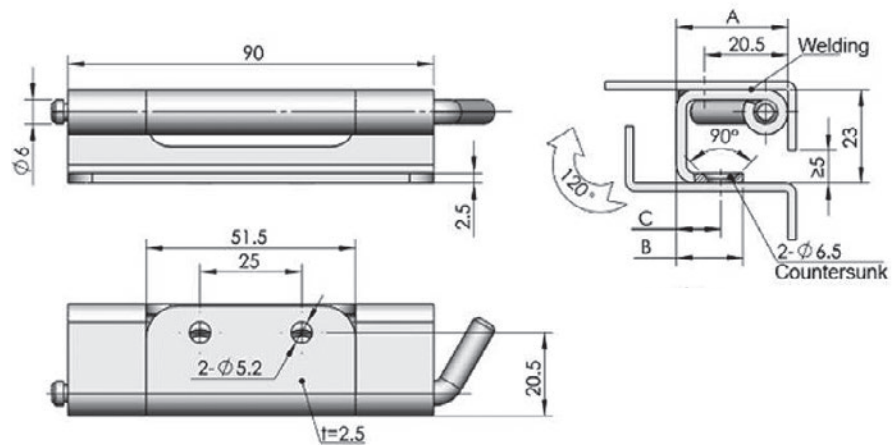
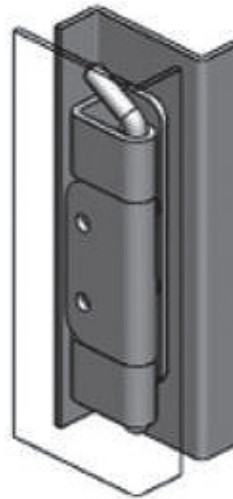
Door cut-out
required

Code	Door Return Cavity (mm)	Height (mm)	Thick (mm)	Open Angle (°)	Material / Finish	Fixing Method	Hole Centres (mm)
M-295-6-3-2	24	60	2.5	120	Steel / Zinc	2xM6 + Weld	42H
M-295-4-0-2	24	60	2.5	120	S/Steel	2xM6 + Weld	42H

HINGES

CONCEALED: 24mm STAINLESS STEEL

- 304 Stainless steel

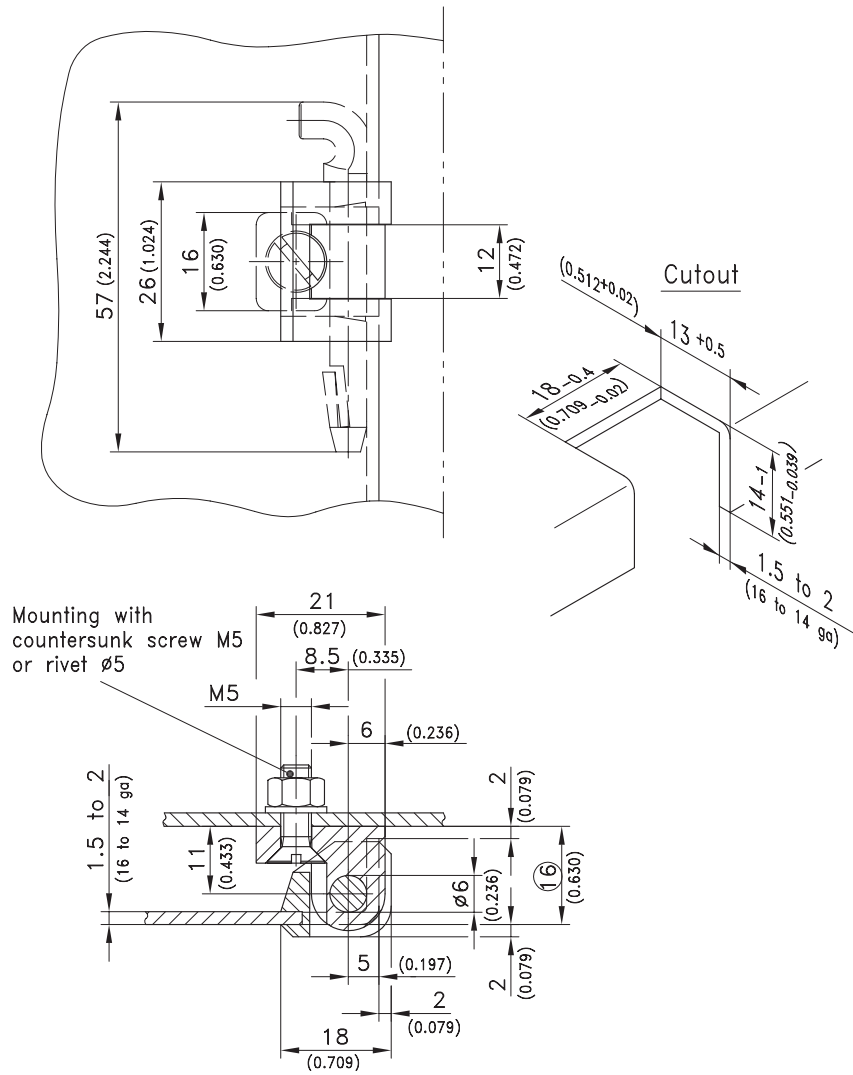


Code	Door Return Cavity (mm)	Height (mm)	Thick (mm)	Open Angle (°)	Material / Finish	Fixing Method	Hole Centres (mm)
CL283-1	24	90	2.5	120	304 S/steel	2xM6+2xM5	25H

HINGES

SEMI-CONCEALED: 16mm PLASTIC

- Polyamide body
- Polyacetal plastic pin



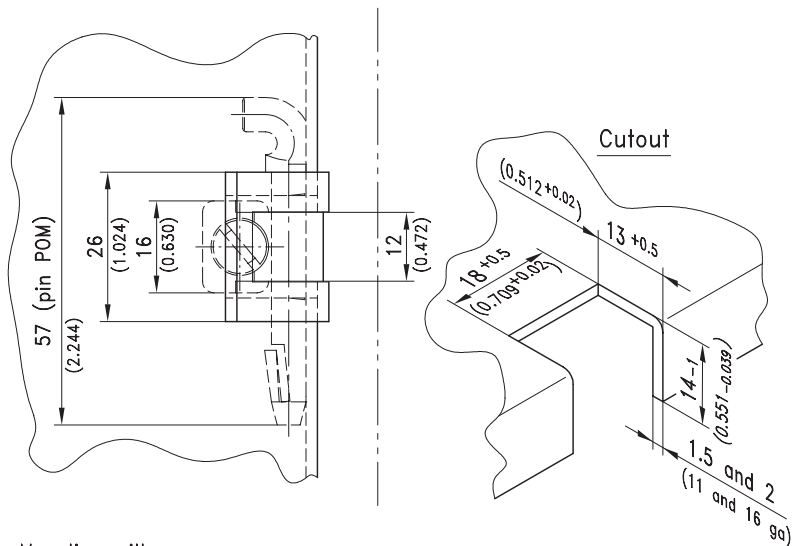
Code	Door Panel Thickness	Door Return Cavity (mm)	Height (mm)	Open Angle (°)	Body Material / Finish	Pin Material	Fixing Method
212-9101	1.5-2.0	16	26	180	Polyamide	POM	Slot + 1xM5

POM = Polyacetal plastic

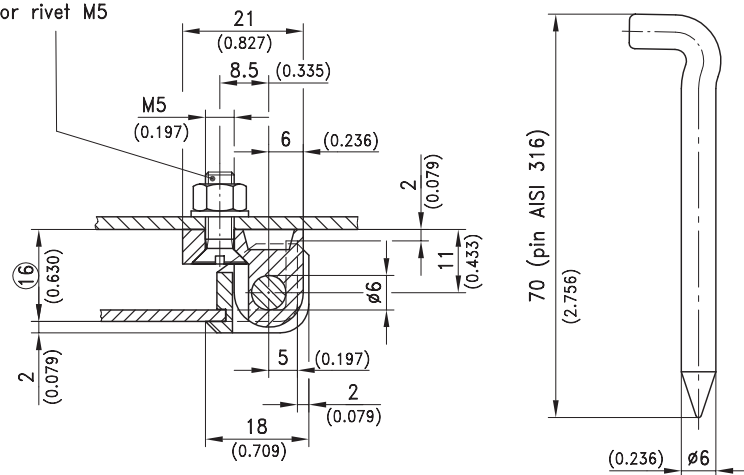
HINGES

SEMI-CONCEALED: 16mm 316 STAINLESS STEEL

- 316 Stainless steel body
- Pin can be polyacetal plastic, or 316 stainless steel



Mounting with
countersunk screw M5
or rivet M5



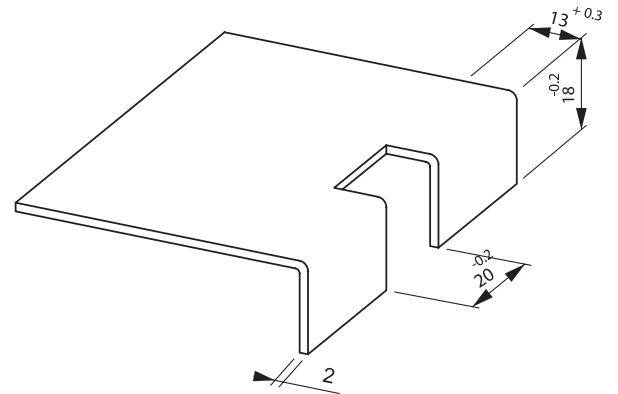
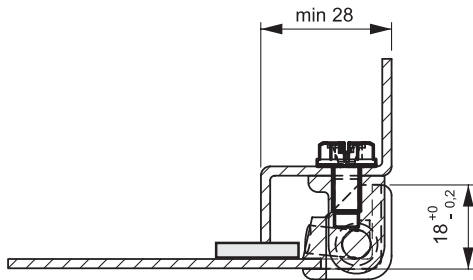
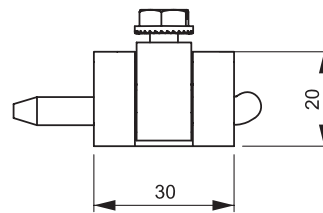
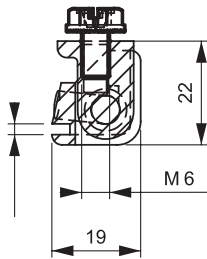
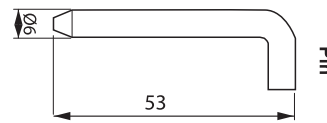
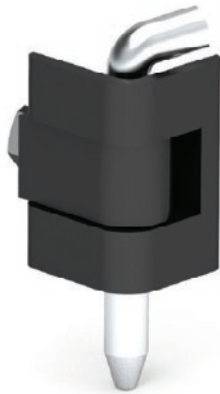
Code	Door Panel Thickness	Door Return Cavity (mm)	Height (mm)	Open Angle (°)	Body Material / Finish	Pin Material	Fixing Method
212-9703	2.0	16	26	180	316 S/steel	POM	Slot + 1xM5
212-9704	1.5	16	26	180	316 S/steel	304 S/steel	Slot + 1xM5

POM = Polyacetal plastic

HINGES

SEMI-CONCEALED: 18mm ZINC & STEEL

- Zinc die cast body
- Zinc plated steel pin



Cut-Out

Code	Door Panel Thick (mm)	Door Return Cavity (mm)	Height (mm)	Open Angle (°)	Material / Finish	Pin Material	Fixing Method
M-097-1-2-2-22	1.5 - 2.0	18	30	180	Steel/Zinc	Steel / Zinc	Slot + 1xM6

HINGES

SEMI-CONCEALED: 20mm ZINC & STEEL / PLASTIC

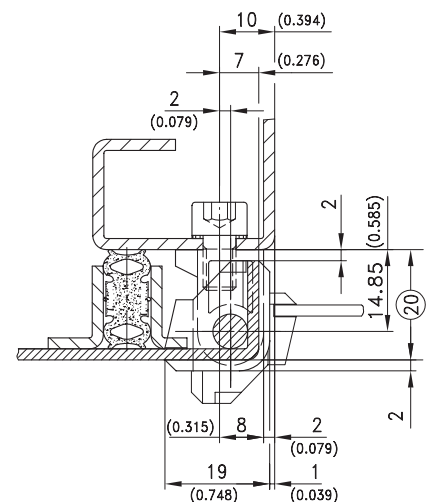
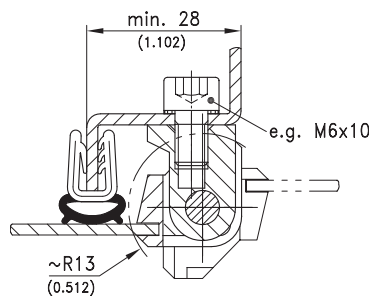
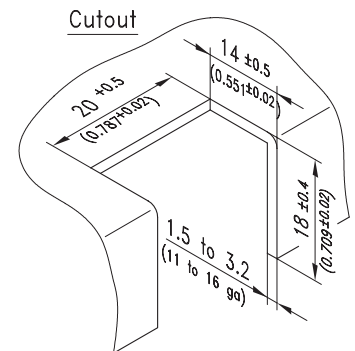
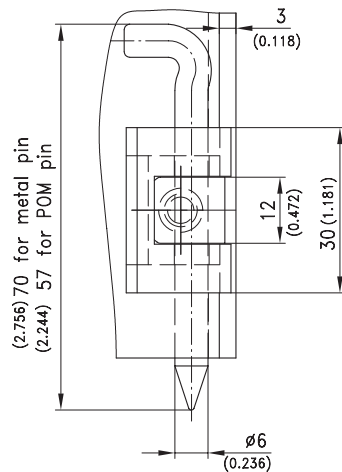
- Zinc die cast body
- Pin can be zinc plated steel, polyacetal plastic, or stainless steel



212-9005



212-9006



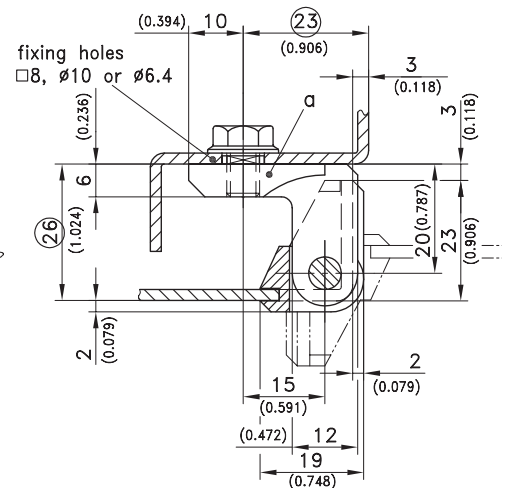
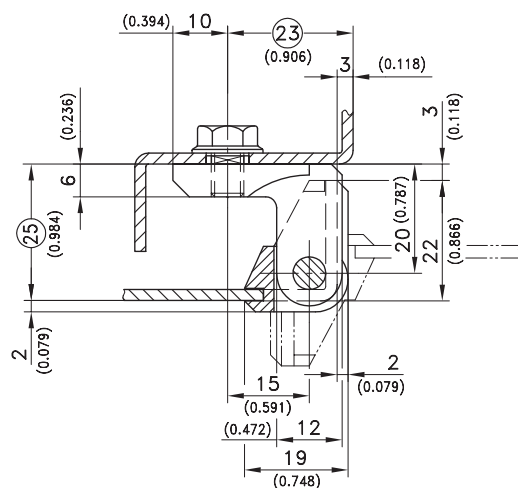
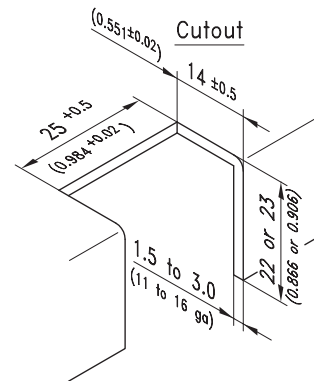
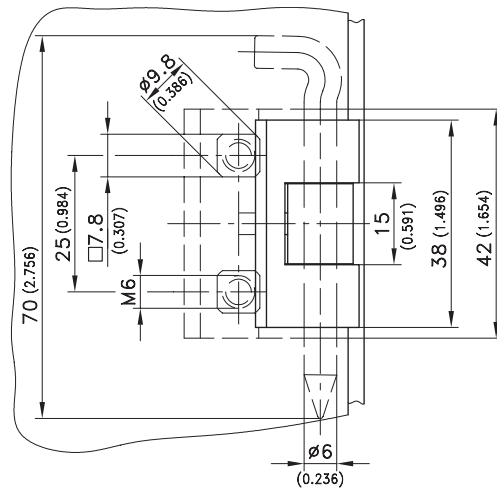
Code	Door Panel Thickness	Door Return Cavity (mm)	Height (mm)	Open Angle (°)	Body Material / Finish	Pin Material	Fixing Method
212-9001	1.5-2.0	20	30	180	Zinc / Chrome	Steel / Zinc	Slot + 1xM6
212-9003	1.5-2.0	20	30	180	Zinc / Chrome	POM	Slot + 1xM6
212-9005	1.5-2.0	20	30	180	Zinc / Black	304 S/Steel	Slot + 1xM6
212-9006	1.5-2.0	20	30	180	Zinc / Black	POM	Slot + 1xM6
212-9505	2.5-3.2	20	30	180	Zinc / Black	304 S/Steel	Slot + 1xM6
212-9506	2.5-3.2	20	30	180	Zinc / Black	POM	Slot + 1xM6

POM = Polyacetal plastic

HINGES

SEMI-CONCEALED: 25mm ZINC & STEEL / PLASTIC

- Zinc die cast body
- Pin can be zinc plated steel, or stainless steel



Code	Door Panel Thickness	Door Return Cavity (mm)	Height (mm)	Open Angle (°)	Body Material / Finish	Pin Material	Fixing Method
212-9014	1.5-2.0	25	42	180	Zinc / Black	Steel / Zinc	Slot + 1xM6
212-9020	1.5-2.0	25	42	180	Zinc / Chrome	Steel / Zinc	Slot + 1xM6
212-9514	2.5-3.2	26	42	180	Zinc / Black	Steel / Zinc	Slot + 1xM6
212-9514-SS	2.5-3.2	26	42	180	Zinc / Black	304 S/Steel	Slot + 1xM6

POM = Polyacetal plastic

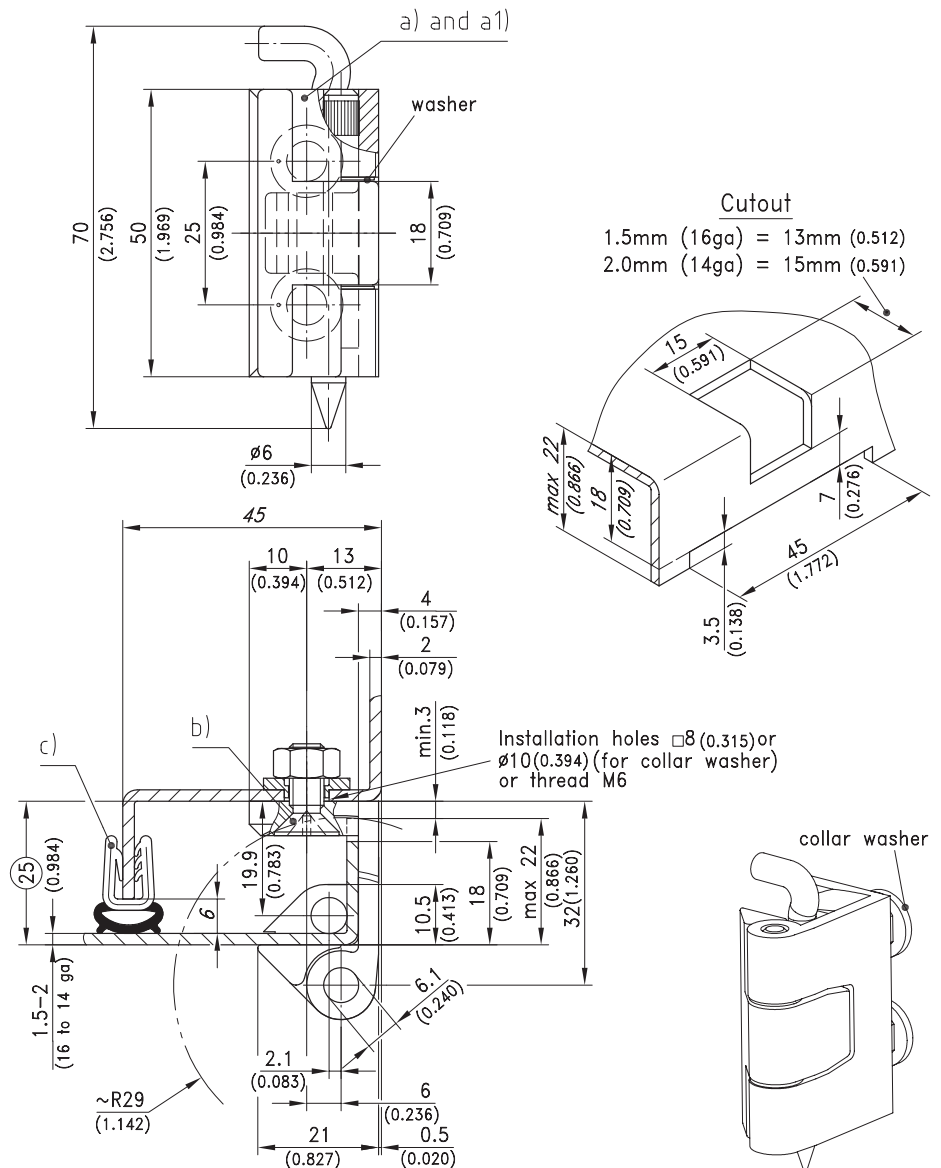
Note: Specifications can change from time to time without notice.
Cut-outs & construction should only be done with the products onsite.

SELECTLOK
NEW ZEALAND LTD

HINGES

SEMI-CONCEALED: 25mm ZINC & STEEL / PLASTIC

- Zinc die cast body
- Pin can be zinc plated steel, polyacetal plastic, or stainless steel



Code	Door Panel Thickness	Door Return Cavity (mm)	Height (mm)	Open Angle (°)	Body Material / Finish	Pin Material	Fixing Method
212-9037	1.5-2.0	25	50	180	Zinc / Chrome	Steel / Zinc	Slot + 2xM6